

# **SURPRISE LAKE CAMP ALUMNI ASSOCIATION**

Established in 1961 for the Betterment of Camp

# **RE-ECHOES**

**The official newsletter of Surprise Lake Camp**

**Autumn 2014**

**Issue # 3**

## ***Inside This Issue***

*Fall Hike Day Recap: Page 6*

*Alumna of the Year: Page 7*

*Health Center Renovation  
Update: Page 13*

*Coming Soon to SLC!  
Starter Farm & Teenside  
Field Bathroom: Pages 12 & 16*

**The  
Henshel  
Family Pool  
Page 3**



## **SURPRISE LAKE CAMP ALUMNI ASSOCIATION**

Established in 1961 for the  
betterment of camp  
307 Seventh Ave, Suite 900  
New York, NY 10001  
Phone 212.924.3131  
Fax 212.924.5112  
Email: [alumni@surpriselake.org](mailto:alumni@surpriselake.org)

### **President**

Joe Goldberg

### **Vice Presidents**

Howard Berk

Chuck Jainchill

Seth Stein

### **Treasurer**

Robin Krompner

### **Board of Directors**

Celia Baczkowski

Jeff Berk

Gayle Hoffman Doyle

Marissa Garfinkel

Scott Gilden

Matt Grubler

Jason Hoffman

Nancy Hoffman

Liz Izower

Faith Kirkpatrick

Avri Klemer

Dena Belkowitz Levine

Randi Weitz Lieberman

Blair Metrick Klaff

Jason Nadell

Sheldon Osinoff

Kenny Pollet

Sheila Pollet

Talia Schneider

Jeff Spiegel, D.D.S.

Mandy Storfer

Michael Tenenhaus

Matthew Tratner

Alex Ullman

Jennifer Weitz Wind

Anne Zbar

Barbara Zbar

Joel Zbar

Jordana Zbar

### **Past Presidents**

Howard Berk

Henry A. Cohen\*

Alvin L. Elkins

Herbert A. Fishman\*

Irving Gilbert\*

Arthur Jakubowitz

Phillip Levinowitz

Sam Peyer\*

### **President Emeritus**

Joel "Whammy" Kaufman

\*Deceased

Any newsletter submissions  
may be mailed directly to  
the editors. Please  
notify us of any errors.

Design & layout by James Dinn



**NOVEMBER 16 - FALL VOLUNTEER DAY** (email [mira@surpriselake.org](mailto:mira@surpriselake.org) for more info)

**DECEMBER 20 - WINTER PARTY** (stay tuned for more info)

**JANUARY - SUPERBOWL BOX POOL**

([www.surpriselake.org/superbowlpool](http://www.surpriselake.org/superbowlpool))

**MARCH 22: 3 ON 3 BASKETBALL TOURNAMENT @ SLC**

**MARCH - NCAA MARCH MADNESS POOL**

([www.surpriselake.org/marchmadness](http://www.surpriselake.org/marchmadness))

**APRIL 4 - PASSOVER SEDER @ SLC**

(email [holidays@surpriselake.org](mailto:holidays@surpriselake.org) for more info)

**APRIL 26 - VOLUNTEER DAY**

**MAY 16TH - SPRING SHABBAT**

(email [holidays@surpriselake.org](mailto:holidays@surpriselake.org) for more info)



## *In Memoriam...*

**Our condolences to Dena Schlackman Stevenson and her family on the loss of her father, Michael Schlackman.**

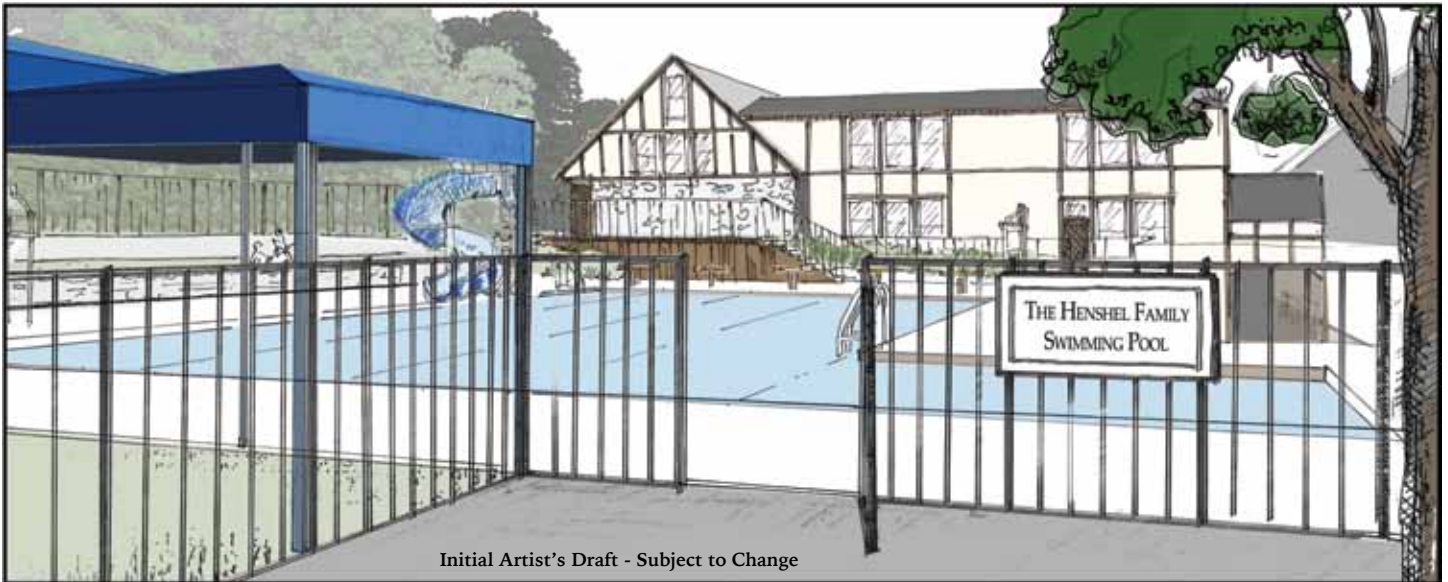
**Surprise Lake Camp extends its deepest condolences to the family of Richard Fierstein, who passed away in July. Rich was a camper for several years in the 60's and a generous supporter of SLC.**

**Our deepest condolences to Brandon Sherman, Lacey Sherman Lewis, and their families on the loss of their mother, Mindy Friedman.**

**Our deepest condolences to Claudia, Jessica, Josh, and Samantha Kessler on the loss of their husband and father, David.**

**Our deepest condolences to Donna Epstein Gottesman, and her children, Harli and Luke, on the loss of their father, Michael Gottesman.**

# SLC is getting a pool!



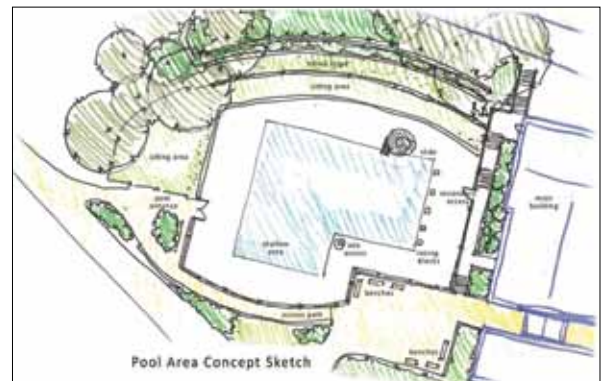
*Surprise Lake Camp would like to officially announce that The Henshel Family will be funding the construction of the new swimming pool that the Board recently decided to build as part of its Strategic Plan.*

*The pool will have an enormous impact on SLC's programs and recruitment. It will be a facility that will make the camp community proud, and that will enrich the lives of young people for many generations to come. Furthermore, the pool will be chlorine-free, and have a sanitation system that will not irritate the skin of chemically sensitive people.*

*The Henshel Family has been one of the leading families of Surprise Lake Camp for more than six decades. Harry Henshel, the first Henshel to serve on the Board, loved camp and loved swimming. This gift is a fitting tribute to his wonderful service to our beloved camp, and to the enduring commitment of all of the Henshels. Joy, of course, is a Past President and was an honoree at the 110th Anniversary event. And Dayle and Patti continue the tradition of Henshel leadership as members of the Board. We are thrilled that this showcase facility will forever bear the Henshel name.*

*"Our family has a long and emotional connection to Surprise Lake Camp, dating back to Harry's father Harry Sr.'s time as a camper in the earliest days of SLC. Our decision to fund the construction of the pool represents our ongoing commitment, as a family and as individuals, to Surprise Lake Camp, to its mission and its continued growth and strength. We are honored to be able to contribute in such a concrete (!) and joyful way to the future of SLC." [Joy, Dayle, Patti, Diane and Judy Henshel]*

*We plan to spend the rest of this off season firming up the plans and obtaining the permits. We will then break ground in September, 2015 and open the pool for the summer of 2016. The official dedication of the pool will be a proud day for the Henshels, and a proud day for Surprise Lake Camp.*



Concept Drawings by Susie Jainchill



# A MESSAGE FROM THE PRESIDENT OF THE ALUMNI ASSOCIATION.

Hello SLC Alumni,

Wow! How quickly the summer has come and gone! It seems like just yesterday that the kids were getting off the buses for their first day of camp.



And yet now, as the weather cools and the leaves change color, I am reminded that the calendar year is indeed winding down. Although our time is short, there is still much work to be done before our 2014 Alumni Fundraising Drive comes to a close. Our goal for this year is to raise \$180,000. I am asking everyone who receives Re-Echoes to consider making a gift to camp to help us reach our goal. The money raised by the Alumni Drive directly supports the scholarships that Surprise Lake Camp distributes to children who otherwise could not afford to come to camp. It is this same scholarship program that allowed many of us to come to SLC as kids!! We all have our own amazing stories and experiences of our times at camp, and now we are in a position to pass along that wonderful opportunity to the next generation of children. Please make a gift!

A huge portion of the SLCAA's donations to camp come from fundraising events throughout the year. On October 19th, we had our annual Hike Day. As always, it was a picture perfect day for hiking, during peak foliage season. On November 8th, we held our second Camp Casino. Both events were wonderful and I want to extend a special thank you to the planners, volunteers, and participants who help to make them a success.

So you may ask "what's next?" On December 20th, the Alumni Association will be hosting a Winter Party. Further details will be distributed shortly, and I hope to see everyone there! The annual Super Bowl Box Pool will be getting underway in a couple of months as well. Stay tuned...

We are also going to begin keeping the Alumni Store open all year long! Now you won't have to wait until summer to purchase all the great SLC gear that we offer. What better Chanukah gift could there be than SLC branded items? Details on how to order will be available very soon!

There is no better way to keep SLC strong and vital than to stay active in the Alumni Association. The SLCAA is always working on new events, and if you have ideas, we would love to hear them. There is always an open invitation to everyone out there to get involved. If you are not already, I ask that you become a member. Dues are \$36 a year or \$250 for a lifetime membership.

See everyone in camp!

Joe Goldberg  
President, SLCAA  
goldnglich@aol.com

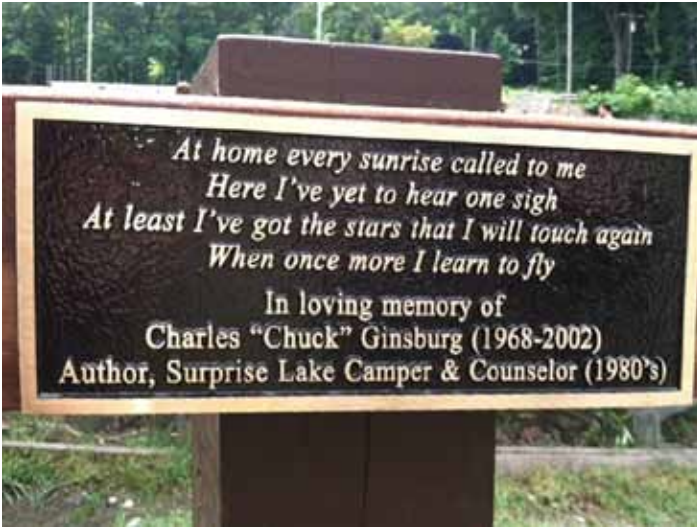
---

## CALLING ALL FORMER SLC LIFEGUARDS!



We would like to invite you to join in the 2015 SLC Swima-  
thon, which will be held at Surprise Lake Camp on August  
2nd, 2015 (coinciding with Alumni Day 2015). If you would  
like to sign up or have any questions, please feel free to  
contact Joshua Suchow at Jsuchow@gmail.com. The 2013  
event raised over \$12,000 for the Scholarship Fund!

# Remembering Chuck Ginsberg



Chuck Ginsburg was a camper and counselor at SLC in the 80's, and tragically passed away in 2002. Each year, there is a blood drive held at the Brotherhood Synagogue in memory of Chuck, and this summer, on Alumni Day, thanks to a gift from his wife, Erica Okone, the bleachers at the Teenside Basketball Court were named in his memory.

In attendance were his sister, Marge, his mom, Carol, his niece, Charley, and his wife, Erica.

On the plaque is an excerpt from a poem written by Chuck, and below is the full poem.

## PARTING WITH HAPPINESS

The clouds have fallen all around  
It's time for me to go  
Though our love may still remain the final season has  
arrived.  
You would let me pass without a touch  
Or even the glance for which I long  
One of us had to know the time  
One of us had to be strong.  
My mistakes brought this hastened our summers end  
Though we won't be lovers let us forever be friends  
The clouds have broken all around none of them  
remain  
Wine once enjoyed has turned sour  
And with it our loves pleasant pain  
But once in my darkest depths you were there  
To lay the clouds to ease my fall  
So now until eternity I will always collect the clouds  
To answer your call  
But for now I must be on my way

The winters moon laughs and  
knows me all too well  
Too many nights I'll spend with its face  
The moon laughing and I alone  
Without my sweet Happiness

Another night and still the dark is black  
No the bright blue of my home  
Of all the terrible things about my house  
At least the darkness was my own.  
I want the crickets to come and sing to me  
With the night in frozen time  
Let them all come and comfort me  
And help make this strange dark mine  
At home every sunrise called to me  
Here I've yet to hear one sigh  
At least I've got the stars that I will touch again  
When once more I learn to fly



On Sunday, October 19, over 40 people gathered at SLC to participate in Fall Hike Day. The day was cool, crisp, and clear - perfect for hiking! The foliage was at its peak, and hikers were able to witness the magnificent colors of SLC and the Hudson Valley. A special thank you to Hike Day Organizers Joe Goldberg and Barbara Zbar, to Ralph Forgacs, Jordana Zbar and Mike Zbar for managing the registration table, and to Jason Hoffman, Mike Tenenhaus, Barry Vegter, and Thom Johnson for leading the various hikes. We hope to see more of you next fall!

### 2014 Hike Day Participants

Anna Basile	Glen Frick	Sheryl Ruck
Ava Basile	Brooke Hampton	Florence Shtundel
Lisa Basile	Taylor Hirshman	Jordyn Solomon
Alina Bernstein	Jason Hoffman	Dan Steiner
Jake Bleiberg	Thom Johnson	Jeremy Steiner
Steve Bleiberg	David Kubrick	Henry Stern
Andi Bloom	Emily Kubrick	Denis Sternberg
Dani Bloom	David Liebowitz	Hannah Sternberg
Steven Bloom	Suzanne Newman	Mike Tenenhaus
Emily Carter	Nicole Ousmanova	Barry Vegter
Chris Carter	Christian Rocanello-Enea	Missy Vogel
Randy Carter	Griffin Rome	Barbara Zbar
Joe Cordero	Todd Rome	Jordana Zbar
Kerry Enea	Vanessa Rome	Steven Zbar
Donna Frick	Bea Hannah Roth	Jaime Zuckerberg



# ***The SLC Alumni Association would like to once again congratulate Gayle Hoffman Doyle on receiving the 2014 Alumni of the Year Award.***

*This award is given by the SLC Board of Directors to an alum who demonstrates an outstanding commitment to SLC.*



Gayle's family & friends that came to camp to support her the night she received her award.



Jordan Dale, Executive Director, Gayle, & SLC Board President, Linda Markowitz.

Gayle comes from an entire family of Surprise Lake campers. Not only did her mom go to SLC, but so did her mom's five brothers and sisters, who of course are Gayle's aunts and uncles. And all of them have sent their children to SLC as well, except for one whose kids will hopefully be ready in a couple of years.

The first time Gayle spent the summer in camp was in 1988 when she was five years old. Her mom worked in camp, and Gayle was cared for by a Parent Helper named Elana Erlich, the daughter of our Registrar of nearly three decades, Sylvie Erlich.

When Gayle was six, she began her camper career in Mountainview girls. She was in Mountainview for a few years, and that's where she met lifelong friends Mandy (Storfer) Efrati and Talia Schneider. One of her Unit Supervisors was an SLC legend named Liz Sussman. The other was her mom, Nancy Hoffman, an SLC legend in her own right.

After Mountainview, Gayle was in Unit J (now Journey's Way), Unit H (now Highlands), and Unit I (now Idyllwood). Gayle was not a model camper. Her mom became a Division Head, and because of this Gayle thought she had special authority. So she often told counselors who she didn't care for that they were fired. This was not well received by the staff.

At one point, camp tried to get Gayle to go to another camp, but her love of SLC was intense, and she made sure she returned. Camp is fortunate that she did. As time went on, she improved as a camper. On Teenside, she was a camper in Timberline, where Jen (Gordon) Ambrose was her Unit Supervisor, and she spent one month in Sherwood, where she improved to the point that she won the Jeff Herman Award. She was in Work Program for her final year as a camper.

Gayle then became a Lifeguard, a position she held for five summers. Then, when she was 21, she became a Waterfront Director for the last two weeks of the summer, and she spent the entire summer of 2005 as a WD.

When Gayle graduated from college, she took a job with Goldman Sachs, where she still works today. But this was far from the end of Gayle's camp career. She has been a Board member for the Alumni Association for many years. She has participated in numerous volunteer days, she has attended Labor Day Weekends, and she has participated in countless alumni events. (By the way, she was at the very first Volunteer Day when she was nine years old and helped build our playground.) She has also brought groups of fellow employees from Goldman Sachs to camp to perform volunteer projects. And she is a generous donor who participates in annual campaigns, capital campaigns, and the 1902 Society.

Perhaps Gayle's greatest service to camp has been her work with Get Your Feet Wet. She has taken time off from her real job and volunteered to work at Get Your Feet Wet for five straight summers. In the first summer she was a counselor, but for the last four years she has helped run the program together with Seth Stein, and Get Your Feet Wet has flourished under their direction.

Gayle is a true blue SLCer. She loves her camp friends. She also loves hiking and the waterfront, and sharing time at SLC with her family. When she got married this last year, there were approximately forty Surprise Lake Camp friends at the wedding. At the end, they all sang Nestling.

Camp is truly fortunate to have Gayle as member of the community. She finds so many ways to give back to SLC, and the Board of Directors is proud to recognize her as this year's Alumni Honoree.



If you are looking for the gift that keeps giving, here's an idea: a lifetime membership in the SLC Alumni Association. This is a great thing to give someone who loves SLC for birthdays, Hanukkah, special occasions, or in honor of someone special. [www.surpriselake.org/joinus](http://www.surpriselake.org/joinus)

*"Our son and daughter enrolled as lifetime members using their own bar/bat mitzvah gifts as a way to segue from being campers (for just the summer) to a lifetime of giving back to an organization that meant so much to them."*

—Barbara Zbar

# alumni news



## Congratulations Celia!

Celia Baczkowski is known to many in the SLC community for her welcoming smile, her candy bowl, and her helpfulness. But there is a lot more to her than that!

We are very proud to announce that on top of working long hours to help make SLC thrive, Celia has also been studying, and not just any topic. Celia has just completed a Master's Degree in Camp Administration from Touro College. The course included topics

like Law and Ethics in Camping, Management and Marketing, Inclusion and Special Needs, Program Development, etc.

It is not easy to complete an advanced degree while working full time. We applaud



*Dear SLC,*

*I thought you might appreciate this picture I took this morning of my baby, Ezra. I didn't even give him the magazine...it was just laying at the couch and he grabbed it! He was enthralled. Thanks for helping keep him busy so I could get ready for work.*

*Sarah (Bravin) Gordon*

Celia for her commitment to her profession and to SLC, and we look forward to having camp reap the benefit of her learning for many years to come!

*written by  
Jordan Dale*



# SURPRISE LAKE CAMP, THE NEXT GENERATION



---

Mazel Tov to Jennifer & Matthew Berk on the birth of their daughter, Savannah Rae. She was born on September 22, weighing 7lbs 10oz.

---

Mazel Tov to Diana [Ostrow] and Ryan Feeney on the birth of their daughter, Jocelyn Summer. She was born on July 5, weighing 7lbs and measured 20.5in.

---

Mazel Tov to Aimee, Seth, and big sister Beckett on the birth of Livvi Gray Stein. She was born on August 6, weighing 6lbs, 14oz.

---

Mazel Tov to Tracie and Craig Miller on the birth of their son, Jesse Spencer, on August 27th.

---

---

---

## SLC ALUMNUS RECEIVES EPA AWARD



Mazel Tov to Murray Lantner on receiving the Environmental Protection Agency's Regional Administrator's Award for Excellence, 2014.

Environmental protection is not just a job for Murray, it is how he lives. He devotes his free time to serving his community, whether it is through participation in town hall discussions, community recycling initiatives, not-for-profit organization events, presentations, clean-ups, kayaking, wildlife habitats, environmental film screenings, or citizen science research. He also bikes to work from Brooklyn almost every day and advocates for New York City bikers' rights. Murray has always been ahead of his time in terms of reducing his carbon footprint and he inspires and encourages his coworkers every day to extend their environmental work into their personal lives as well.

We congratulate him on this well-deserved award.

# Love is in the air!



Mazel Tov to Amie Ettinger and Jason Marino on their July 12th wedding.



Congratulations to Liz Izower on her August 9th marriage to Nick Lentini.



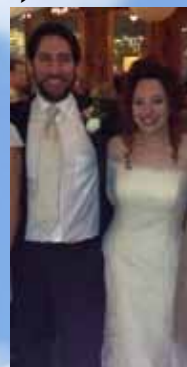
Mazel Tov to Rachel Katz on her August 30th marriage to Paul Vasiliadis. Rachel was a camper at SLC, and her parents, Bruce and Heidi, met at SLC.



Mazel Tov to Jeff Berk and Emily Iger on their October 11th wedding.



Mazel Tov to Michelle Grosberg on her October 19th marriage to David Smith. Pictured above (from left to right) are four SLC alumni in attendance: Jeremy Smuckler, Dani Johnson, the blushing bride, Jessica Zalin, and Bryan Salz.



Mazel Tov to Shayne Neuwirth on her marriage to Scott Weiner on July 19th in Cabo San Lucas, Mexico.





# ***Off-Season Jewish Holiday Programs***

## **Rosh Hashanah and Sukkot Festival & Feast**



*This year we had our 9th Rosh Hashanah celebration and our 3rd Sukkot Festival and Feast at Surprise Lake. Even though we were inside and the weather was cold and rainy, over 300 people still came up to camp to welcome in the New Year. We had a lovely service with many campers participating. We had a beautiful fall day for our Sukkot Festival and Feast. We had 100 children and adults singing, playing games, eating plants and dining in our Sukkah on lakeside. It was a great way to honor the harvest season!*

*Don't forget to mark your calendars for our 3rd Passover Seder on April 4, 2015, and our Spring Shabbat May 16th, 2015!*



# SLC Harvest

For several years, Surprise Lake Camp has wanted to establish a small farm which can be used to teach kids about growing food and about the Jewish values related to food. This is a natural program development for SLC given the site's history as a former farm, given the greening aspect of our mission, given our long relationship with the Teva Learning Alliance, and given our close ties with Eden Village Camp and the Jewish Farm School.

**Thanks to the generosity of Stan Josephson, we now have the funding to move forward with this project!**

The site will be the grassy strip of land that runs between our upper and lower roads after passing our entry booth and before getting to our Main Building. This location enjoys lots of sunshine and is not immediately adjacent to the forest. It is easily accessed and centrally located, and at present it serves no program function.

Our intention is to design beds that have enough space between rows to bring in groups of kids and have them participate in hands-on gardening work. Priority will be given to produce that is easy to grow and can be harvested in August so that the kids get a chance to eat what has been grown. This will probably include fruits and veggies like tomatoes, cucumbers, peas, zucchini, carrots, radishes, strawberries, rhubarb, beets, turnips, and lettuce. We also plan to plant up to a dozen dwarf fruit trees.

We plan on hiring a farm specialist who will be on our staff from roughly mid-April through mid-October. This individual would be responsible for planting, weeding, watering, harvesting, and closing down the farm for the winter. He/she would also create and implement a farm curriculum for Jewish and secular groups in the spring, summer, and fall.



**Future site of the farm.**

This farm will enable us to:

- a. Breathe new life into Jewish traditions, holidays, and social justice work by connecting to the myriad agricultural and food traditions of our people.
- b. Connect our community to the larger sustainable food movement based on the values of tikkun olam (repairing the world), gemilut chasadim (benevolence), and l'ovda ul'shomra (to till and to tend).
- c. Produce high quality, locally grown food to nourish our bodies and spirits.

Similar to the honey bee hives we implemented in 2012, we feel this farm will not only enhance the experience of our summer camp population, but will also have a profound impact on the off season programs we run for our Rosh Hashanah and Sukkot programs, as well as our retreat groups and our Family Camping Weekend.

**We are grateful to Stan for enabling us to move forward with this vision!**



# Health Center Renovation



**We are thrilled to announce that the Health Center renovation is under way! We will be sharing more pictures of the renovation in future issues of Reechoes as well as on Facebook, so stay tuned! In the meantime, we remain grateful to the following donors who made this renovation possible. We still need a few more gifts to complete the funding, so please be in touch if you would like to participate.**

## **\$100,000 or above**

Stan Josephson

## **\$10,000 to \$100,000**

The Henshel Family

Robert Berne

## **\$2,000 to \$10,000**

Former Health Staff of SLC

Norm Friedman

The Greenbaum Family

Warren Heaps

Chuck Jainchill

Leana & Marc Katz

Gene & Space Kelly

Ele Klein

Alan Kleiman

Judith and Michael Margulies

Judith Pauker

Jerry Person

F. Peter Rose

Robin and Larry Rubinstein

Robert M. Seigel z"l

## **\$1,800**

The Altabet Family

Andrew Bata

Pearl and Harry Belkowitz

Brian Blaufeux

Moe Bordwin

Bill Briggs

Anita Cruso

The Dinn Family

Martin Freedman

Glen Frick

Phyllis & Alvin Goldman

Ben Gordon

Rita and Max Greenberg

Bruce Haber

The Hirsch Family

Ron Kalb

Lee Kaplan

Tom Karger

Wayne Kellner

Ted Liebowitz

Dena and Elly Levine

Andrew Lobb

Linda Markowitz

Robin and Danny Muskin

Stephen Nitkin

Rebecca Safeer

Carol Grief Saltz z"l

Cindy Shmerler

Howard Schur

The Seligson/Sidor/Penney Family

Eliot Senor

Florence Shtundel

Seth Stein

Denis Sternberg

Elaine and Paul Suchow and Family

In Honor of Rachel and Paul Vasiliadis

Max Weintraub

The Zbar Family

## **Below \$1,800**

Sylvaine Baczkowski

Joel Cohen

Mandy (Storfer) Efrati

Howard Fleischman

Amy Goldberg

Molly Schulman

# Surprise Lake Camp 2014 Alumni Drive & Dues Form



**First Name:** \_\_\_\_\_ **Last Name:** \_\_\_\_\_

**Address:** \_\_\_\_\_

**Email:** \_\_\_\_\_ **Date of Birth:** \_\_\_\_\_

**Home Phone:** \_\_\_\_\_ **Cell Phone:** \_\_\_\_\_

## 2014 Alumni Drive/Send A Child To Camp

- |   |  |   |
|---|--|---|
| <input type="checkbox"/> 1 Day at SLC: \$140  | <input type="checkbox"/> 5 Days at SLC: \$700                | <input type="checkbox"/> Full Summer at |
| <input type="checkbox"/> 2 Days at SLC: \$280 | <input type="checkbox"/> One Week at SLC: \$975 or more      | SLC: \$7,500 or                         |
| <input type="checkbox"/> 3 Days at SLC: \$420 | <input type="checkbox"/> Two Weeks at SLC: \$1,950 or more   | more                                    |
| <input type="checkbox"/> 4 Days at SLC: \$560 | <input type="checkbox"/> One Session at SLC: \$3,900 or more |   |

## SLC Alumni Association Membership Dues

Annual Membership: \$36

Lifetime Membership: \$250

## My/Our 2014 Contributions:

**Alumni Drive/Send A Child To Camp: \$** \_\_\_\_\_

Gifts to the Alumni Drive are used to support this year's scholarships. *This is camp's greatest current need.* If you are supporting this annual drive, please consider making an additional gift to our scholarship fund to secure our ability to provide for future scholarships.

**Alumni Association Dues: \$** \_\_\_\_\_

Membership entitles Alumni to be kept informed of alumni events, receive a membership card, calendar of events, quarterly Re-Echoes newsletter, free admission to Alumni Day, a discount at the Alumni store, and a discount to all alumni events at which a fee is charged.

**Scholarship Fund: \$** \_\_\_\_\_

This money goes toward an endowment to provide for future scholarships. (Gifts will be credited to the Henny Cohen Scholarship Fund unless you direct that they be put into another scholarship fund.)

**Jeff B. Herman Memorial Fund: \$** \_\_\_\_\_

Pays for camp's annual award given to the most outstanding male and female athletes on Teenside and helps to fund camper scholarships. Jeff Herman was a beloved Surprise Lake Camper who became a New York City policeman and was tragically killed in the line of duty.

**Other Fund: \$** \_\_\_\_\_ **Name of Other Fund:** \_\_\_\_\_

☐ **Please bill my credit card: (No AMEX, please)**

Card Number: \_\_\_\_\_ Exp. Date: \_\_\_\_\_ Total Amount to Charge: \$ \_\_\_\_\_

☐ **I'd like to make monthly contributions with my credit card.**

Preferred day of charge: \_\_\_\_\_ Month to begin: \_\_\_\_\_ Monthly Amount: \$ \_\_\_\_\_

Number of Months: \_\_\_\_\_ Total Donation Amount: \$ \_\_\_\_\_

☐ **I prefer to save paper & postage. Please email me my/our acknowledgment letter. (please confirm/ include email address above)**

☐ **I request that my gift be listed as "anonymous."**

☐ **I would like to speak with an Alumni Fundraiser and/or member of Surprise Lake Camp's professional staff about becoming a member of the 1902 Society.** Membership in the 1902 Society is open to all those who include Surprise Lake Camp in their estate plans. We hope you will tell us when you have done so because we would very much like the opportunity to say "thank you" for your generosity.

## **DONATE EASILY & SECURELY ONLINE @**

## **WWW.SURPRISELAKE.ORG/DONATE**





MICHAEL ZBAR, CPA

**MICHAEL ZBAR AND PETER M. LEUNG, LLP**  
CERTIFIED PUBLIC ACCOUNTANTS

120 NORTH MAIN STREET, NEW CITY, NEW YORK 10956  
TELEPHONE: (845) 639-3100 • (212) 398-9111  
FAX: (845) 639-3180  
E-MAIL: mzbar@zbarleungcpa.com  
www.zbarleungcpa.com

Office Hours Monday thru Saturday and Evenings

**Stewart Lantner, D.D.S.**  
**Joseph S. Goldberg, D.D.S.**

General, Cosmetic & Laser Dentistry  
Dental Sleep Medicine

(212) 399-8888  
Dentist@DrLantner.com  
www.DrLantner.com

Suite 800  
200 West 57th Street  
New York, NY 10019

LAW FIRM OF SETH STEIN, PC

**SETH STEIN**

120 Broadway, 28th Floor  
New York, New York 10271

(212) 532-5503 \* FAX (917) 591-8292

EMAIL: sstein@ssteinlawfirm.com

**THINK BIG INK** Ilana Sussman  
(AKA Ilana Lambert)  
Email: ThinkBigInk@gmail.com

Download and Print at home:  
Personalized Invitations  
Photo Cards Thank You Cards  
Labels Camp labels  
Camp Stationery and more!

Like us on Facebook

www.ThinkBigInkDesigns.com

**SLC's Community Corner Advertising Rates:**

	Fall or Winter Issue	Spring Issue	Three Issues
Business Card	\$36	\$54	\$120
Quarter Page	\$72	\$100	\$180



**Jonathan M. Tarrash, M.D.**

Board Certified in Pain Medicine  
Physical Medicine and Rehabilitation

4800 Linton Blvd  
Building A Suite 201  
Delray Beach, Florida 33445  
www.southpalmorthopedics.com

By Appointment Only  
(561) 496-6622  
Fax: (561) 496-6577



*Jersey Lynne  
Farms, Inc.*

Tel. (718) 649-6730  
Fax. (718) 649-1256  
8801 Foster Avenue  
Brooklyn, NY 11236

Email: kseligson@jerseylynnefarms.com

Wholesale Distributor

Quality A Eggs  
Dairy Products  
Deli Provisions  
Meat  
Frozen Food  
Candy  
Beverages  
Paper, Plastic, Restaurant Products

**Kenneth Seligson**  
Ext. 149

**Tracie L. Basch**  
Executive VP of Operations  
tracie@thecateringgroupny.com

thecateringgroupny.com

130 West 30th Street Suite 2B  
New York, NY 10001  
Tel. 646 483 8018



SURPRISE LAKE CAMP  
ALUMNI ASSOCIATION  
307 SEVENTH AVE, SUITE 900  
NEW YORK, NY 10001

Return Service Requested

Non-Profit Org.  
U.S. Postage  
PAID  
New York, NY  
Permit No.  
5851

*It takes money and resources for the Alumni Association to mail you this newsletter.  
Please let us know if you move, get multiple copies or would like to be removed from our mailing list.*

## Teenside Field Bathroom!



If you have visited camp over the past two summers, you may have noticed a new addition to the Mainside Ballfield. Made possible by Stan Josephson, and affectionately named the "sport-a-potty", this bathroom is a GREAT addition to the program. No longer do campers have to trek back to the Main Building to use the restrooms or get a drink of water... saving a lot of time and aggravation!

And now, once again thanks to Stan, Teenside will be getting its own field

bathroom! Campers and staff will no longer have to trek up to Lakeview. The new facility will be located right near the Teen Equipment Shack.

Teenside will be "relieved" to have this enhancement, and we thank Stan for making it possible.