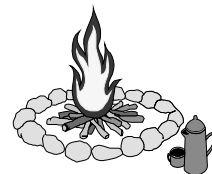


# SURPRISE LAKE CAMP ALUMNI ASSOCIATION



Winter Office:  
307 Seventh Avenue  
Suite 900  
New York, NY 10001



Phone: (212) 924-3131  
Fax: (212) 924-5112  
[www.surpriselake.org](http://www.surpriselake.org)  
[alumni@surpriselake.org](mailto:alumni@surpriselake.org)

# RE-ECHOES

Spring 2009

ISSUE #2

Editor: Celia Baczkowski

## UPCOMING CAMP EVENTS . . . MARK YOUR CALENDAR TODAY!

SPRING OVERNIGHT PARTY AT SLC.....SATURDAY, MAY 17, 2009  
ALUMNI DAY.....SUNDAY, AUGUST 2, 2009  
LABOR DAY/FAMILY CAMPING WKND.....FRIDAY, SEPT. 4 TO MONDAY, SEPT. 7, 2009  
ROSH HASHANAH AT SLC.....SATURDAY, SEPTEMBER 19, 2009  
SEVENTH ANNUAL GOLF OUTING.....MONDAY, SEPTEMBER 14, 2009  
SLC HIKE-A-THON.....SUNDAY, OCTOBER 18, 2009

## June is Leave-a-Legacy Month!

### Promote Your Passion

Across the country, people from all walks of life are celebrating Leave a Legacy month this June by remembering their favorite charities with a legacy gift. Their gifts take many forms:

- ◆ Bequests
- ◆ Retirement plan and life insurance beneficiary designations
- ◆ Charitable gift annuities and charitable remainder Trusts

Surprise Lake Camp is participating, too! Through the Grinspoon Institute's Create a Jewish Legacy program, camp is receiving advice, coaching, and incentive funding to help us secure legacy gifts (bequests) from loyal alumni and donors.

To learn more about leaving your own legacy, call 212-924-3131 or visit <http://tinyurl.com/1902Society>

## 1902 Society



*"Just as my parents planted for me,  
so I plant for my children."*

## WANTED!

### ITEMS TO AUCTION AT OUR GOLF OUTING

Do you have a connection at an electronics store?  
Do you have access to items at wholesale prices or better? Do you have airline miles or travel vouchers you won't use? Do you know someone who can donate goods or services? Please email [alumni@surpriselake.org](mailto:alumni@surpriselake.org) to offer your help!



## still getting Reechoes only once a year?

Now is the time to pay your SLC Alumni Association membership dues! Only paid members of the SLCAA receive Re-Echoes four times a year. Unpaid members only receive our Spring edition. So why continue to miss out on Camp and Alumni news? Become a member today! You can join on our website or by filling out the form on page 15. If you are not sure about the status of your membership, please call the camp office at 212-924-3131 or e-mail [alumni@surpriselake.org](mailto:alumni@surpriselake.org).

**SURPRISE LAKE CAMP  
ALUMNI ASSOCIATION**

307 Seventh Ave, Ste 900  
New York, NY 10001  
Phone 212.924.3131  
Fax 212.924.5112  
Email: [alumni@surpriselake.org](mailto:alumni@surpriselake.org)

**President**

Joe Goldberg

**Vice Presidents**

Howard Berk  
Chuck Jainchill  
Seth Stein

**Treasurer**

Robin Kromprier

**Secretary**

Matt Grubler

**Board of Directors**

Celia Baczkowski  
Jeff Berk  
Lori Fishman  
Seth Fishman  
Marissa Garfinkle  
Scott Gilden  
Gayle Hoffman  
Nancy Hoffman  
Avri Klemer  
Dena Belkowitz Levine  
Jason Nadell  
Sheldon Osinoff  
Kenny Pollet  
Sheila Pollet  
Adam Pomerantz  
Talia Schneider  
Jeff Spiegel, D.D.S.  
Mandy Storfer  
Matthew Tratner  
Anne Zbar  
Barbara Zbar  
Joel Zbar  
Jordana Zbar

**Past Presidents**

Howard Berk  
Henry A. Cohen\*  
Alvin L. Elkins  
Herbert A. Fishman  
Irving Gilbert\*  
Arthur Jakubowitz  
Phillip Levinowitz  
Sam Peyer \*

**President Emeritus**

Joel "Whammy" Kaufman

**Editor**

Celia Baczkowski

\*Deceased

Any newsletter submissions may be mailed directly to the editors. Please notify us of any corrections.

*The Alumni Association,  
established in 1961 for the  
Betterment of Camp*



## Message from the President

Spring is finally in the air and that means another camp season is almost upon us! As our wonderful staff readies SLC, allow me to bring everyone up to date on what's new and improved for the summer of 2009. I begin with the renovation and winterization of the old Gardens' Lodge, which is now named the Henshel Lodge and is now fashioned after the successful design of Journey's Way's lodge. This will allow for more year round use of camp! On the Teenside softball field, everyone will be able to challenge the new "Blue Monster." This right-field home run wall was designed to mimic the famous "short porch" of Yankee Stadium! Of course, with the addition of the lights last year, night games are now going to be even more exciting!

The 2008 Alumni Drive brought in a record \$152,000! Thank you to everyone who contributed! The dedication and charitable nature of our alumni is a major reason that SLC has managed to thrive for over one hundred years. The goal this year is \$180,000. Please consider a pledge or gift now so we are guaranteed to be successful in 2009! The donor form can be found on page 15.

Our Alumni events calendar is very busy. Details about all of the following can be found in this issue of Re-Echoes, or by contacting me. On May 16<sup>th</sup>-17<sup>th</sup>, 2009, the Spring Overnight Party will be returning to camp after a hiatus. This year's Alumni Day will be Sunday, August 2<sup>nd</sup>, 2009 and of course, the famous "night before party" will once again take place at the nostalgic Fishkill Bowling Alley. Please also mark your calendar for the Labor Day Family Weekend (9/4-9/7) and our Rosh Hashanah Service (9/20). The 7<sup>th</sup> Annual Golf Outing will tee off on September 14<sup>th</sup>, 2009 and the popular Hike-A-Thon will be held on October 18<sup>th</sup>, 2009. I hope that everyone will try to make it to one, if not all of these events!

To date, we have 150 annual members and 320 lifetime members of the Alumni Association. This year's resolution is to double both memberships! This is certainly a lofty goal but at the same time, most attainable. In the past year, we have had an overwhelming reconnection of alumni to SLC. Alumni gatherings, word of mouth, and, of course, Facebook, have brought countless alumni back together. I am now asking all former campers and staff to help SLC by joining the Alumni Association. The annual membership is \$25 and the one-time lifetime membership is \$180. The dues form is also on page 15.

There are so many ways that you, as an alumnus of SLC, can help camp. Many of these do not necessarily require a monetary gift. In these uncertain economic times you can give back to SLC with a donation of your time or service. The Alumni Association is always seeking volunteers for its events. I hope that will soon include you!

See you all in camp!

Joe Goldberg, President, SLC Alumni Association, [Goldnglich@aol.com](mailto:Goldnglich@aol.com)



# ALUMNI NEWS



☆ Mazel Tov to Seth Stein and Aimee Lipman who were engaged on February 12, 2009.

☆ In the fall, many of our families were asked to complete a "Customer Centric Survey" about Surprise Lake Camp online. Completing this survey made families eligible for a cash prize. We are pleased to announce that the Wayne Family was one of the winners of this drawing and chose to donate their prize money to Surprise Lake Camp's Eddie Cantor Ice Cream Fund. THANK YOU!

Congratulations to camper Jackie Miskanic and her band, Jersey Kidz, who have been chosen to perform at Bamboozle! They are making history as the youngest band ever to play there!

**The Bamboozle** is an annual rain-or-shine, two-day music festival held in [New Jersey](#). Every year, new bands compete for spots at this show, which includes 350 bands. This is Jersey Kidz' chance to perform in front of 80,000 fans, alongside huge acts like Fall Out Boy, No Doubt, and more!

For more information visit: <http://www.thebamboozle.com/bamboozle/home.php>. GOOD LUCK, JACKIE!



☆ Our condolences to the Krauthamer family on the passing of Jules Krauthamer in March. Jules was a Winter Camper from 1946-1948, and his four children, Terri, Amy, Marni, & Roy, all attended SLC.

☆ Our condolences to the family of Ron Kerstein who passed away in March. Ron worked at SLC in the 1950's.

☆ Our condolences to Elias Goldstein and his family on the loss of his mother.

☆ Our condolences to Alix Comeau and her family on the loss of her mother.

# From Our Alumni...



Just a very short story. I was born in 1952 in NYC and was raised by a single mother (no easy feat in 1952). I spent more than 8 years attending Surprise Lake Camp for next to nothing (based on my mom's income). A few summers I went for the 1st and 3rd sessions, and my mom saved dimes and quarters to send me.

While I haven't maintained any connections with people, those times were the happiest times of my life: performing on the Eddie Cantor Stage, the first time I ever fished, went boating, the "raids on the girls tents," drinking bug juice, and getting yelled at for occasionally making up our own prayers at mealtimes.

My wife is currently disabled and my income was cut this past year by over 35%. I can only afford to send \$25, but I feel I have to do something. It's not much, and when I can I will send more, but you need to know that SLC (even at age 56) gave me the best memories of my life. Mr. Melzer was a Godsend back then, and I keep you all in my thoughts and prayers.

**Bob Feger**  
**xnysmokie@yahoo.com**

PS— I fell in "love" for the first time at camp, and although the girl didn't have any clue at all who I was, I remember her name like it was yesterday!



Hi everyone! My family and I are in the middle of trying to figure out what to do. My little brother, David, who is now 19, has always been sick. He got a kidney transplant about 4 years ago. That kidney did not work and now he is on dialysis 4 times a week. My aunt was trying to donate a kidney to him but she ended up being unable to, which she found out at her very last test! Needless to say my family is not doing too well and my brother is super bummed out. We are hoping and praying for another kidney really, really soon.

Please understand that G-d has blessed each and every one of us with TWO kidneys. Healthy human beings only need ONE to live. If you're thinking of donating, the surgery that is required is not life threatening. For more information

about being a kidney donor, please visit <http://www.livingdonorsonline.org>

David's blood type is A+, so if you are an O- or A+, you could potentially be a match!

If anyone knows anything that can be done for him, or knows anyone who can donate or any group we can join that can help my family, please let me know.

Thank you all so much,

**Jenna Pasternak**  
**Jenna.pasternak@gmail.com**  
**SLC Camper in the 1990's**

For prayers, my brother's Hebrew name is Dovid Yecheskel ben Sara Rivkah.

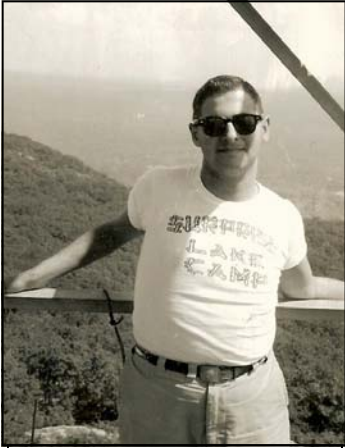
## THINGS WE NEED



Camp is always looking for donated items. Money not spent on goods is spent on scholarships so children can come and enjoy the sunshine at camp! As always, your donations are tax deductible. We are currently looking for the following:

- |   |                         |                           |
|---|-------------------------|---------------------------|
| *Golf Carts   | *Working laser printers | *Digital Cameras          |
| *Linens   | *Hospital Beds          | *Batteries (new)          |
| *Laptop Computers (Windows XP or higher)                                  | *Portable GPS Systems   | *Telescopes               |
| *Cars or Vans in good condition (12 passengers or smaller)                |                         | *Baseball/Softball Gloves |
| *Outdoor furniture, especially Adirondack chairs, benches & picnic tables |                         |                           |

# From Our Alumni Continued...



Al in July, 1957 at the Mt.  
Beacon Fire Tower

(To read Al's first two segments of his camp memoirs, please visit <http://www.surpriselake.org/alumni/reechoes.php>)

This third and final segment pertains to the founding of the Surprise Lake Camp Alumni Association, which is proudly celebrating its 48<sup>th</sup> year in operation. One day back in the fall of 1960, I received a postcard from Henny Cohen, who had retired as Head Counselor of SLC, and Dean of Boys and Basketball Coach at Seward Park High School. He wanted to have a meeting with a few former staff members and campers to discuss organizing an Alumni Association. It was decided to have a kickoff banquet in early 1961 to invite as many former SLC'ers as possible. I wish I could describe to you what a wonderful event that was, and what a thrill it was to see so many people that I had not seen in several years. The banquet was a big success, and, as a result, the SLC Alumni Association became a reality.

When the Alumni Association was organized in 1961, I was the youngest member at that time by approximately ten years. I was also married to Louise on October 22, 1961, and I was proud to have Asher and Shirley Melzer at my wedding. As the years went by I assumed several positions in the Alumni Association, including Editor of Re-Echoes, Third, Second, and first Vice President, and finally President.

There were many Charter Alumni members who were an important part of the Alumni Association in those early years. Several Alumni members went to winter camp and summer camp as far back as the teens, 20's, and the 30's. We used to have Alumni Board Meetings every month at the SLC New York City office at 31 Union Square West. Before every meeting, many of us always enjoyed getting together for dinner at a local restaurant, at the corner of 16<sup>th</sup> Street & Broadway. Henny Cohen was our first President for seven years, and he successfully guided us as we planned and organized many events. We also had frequent Alumni get-togethers at the Federation Building on East 59<sup>th</sup> Street, or at the 92<sup>nd</sup> Street "Y." One of our biggest fundraisers every spring was our annual weekend at one of the well-known hotels in the Catskills. Those of us who got together always enjoyed this wonderful social event. Of course, the one event we always looked forward to was Alumni Day, which we used to have on the last Sunday in June. During our first ten years, the Alumni Association contributed many physical and monetary donations to the camp, and we celebrated our tenth Anniversary by erecting Alumni Hall, which still proudly stands by the Main Waterfront.

One thing that I always wanted to see happen was for the Alumni Association was to be able to attract many new, younger Alumni members than we had when our organization was first chartered. Let me tell you that this was not an easy objective to attain. Now it is so wonderful to see all the new former campers and staff members that are currently active members of our Alumni Association. I know that Henny Cohen, and all our Charter Alumni members, would be proud of how much our current Alumni Association has accomplished in recent years, and how far we have come since we first started back in 1961.

I would like to conclude this article by personally thanking Jordan Dale for all he has done to keep the spirit of Surprise Lake Camp alive. In the twenty-three years Jordan has been Camp Director, we can all be proud of how far SLC and the Alumni Association have come in working together to serve the children of the New York Metropolitan area.

I would also like to thank Celia Baczkowski for encouraging me to write about my memories of SLC. In addition to serving as Editor of Re-Echoes, Celia does so much for SLC and the Alumni Association. I can't think of a better way to end this segment than to repeat the first line of my first article, and that is, "Nestled 'neath the shady tree lies our camp so dear." SLC will always have a special place in all our hearts.

Al Elkins, Past President, SLC Alumni Association



# It's Rosh Hashanah 2009

## Come celebrate the new year at Surprise Lake Camp!

Once again Surprise Lake Camp is offering its campers, staff, alumni, and Board members the opportunity to celebrate the High Holiday of Rosh Hashanah in the most beautiful synagogue we know, right here at Surprise Lake Camp. This program is designed for people who don't do anything for the holidays and feel like they should or for people who are looking for an alternative to a traditional temple service.

The day will include a relevant, meaningful, child friendly Surprise Lake service surrounded by camp's natural beauty. Following the service, activities will be offered for both children and adults, including such things as a reflective nature walk, an art project, storytelling & games, group discussions, yoga & meditation, and text study.

And what Jewish Holiday would be complete without a festive meal?

Date: Saturday, September 19

Time: Service will begin at 9:45 am.

Refreshments will be served at 9:00 am.

Place: Surprise Lake Camp, Cold Spring, NY

-----  
**PLEASE RSVP BY AUGUST 17th!**

**Four easy ways to do it:**

**BY MAIL:** c/o Surprise Lake Camp Rosh Hashanah, 307 7th Ave.—Suite 900, NY, NY 10001

**BY PHONE:** 212-924-3131    **BY FAX:** 212-924-5112

**BY E-MAIL:** [celia@surpriselake.org](mailto:celia@surpriselake.org)

When RSVPing, please include the following information:

Your Name: \_\_\_\_\_ Email: \_\_\_\_\_

Phone Number: \_\_\_\_\_

Names & ages of others in your party: (if adult, write "adult")

Guest 1: \_\_\_\_\_ Age: \_\_\_\_\_

Guest 2: \_\_\_\_\_ Age: \_\_\_\_\_

Guest 3: \_\_\_\_\_ Age: \_\_\_\_\_

Guest 4: \_\_\_\_\_ Age: \_\_\_\_\_

### **\*Please Note:**

It costs camp money and resources to provide this program free of charge to the SLC community. In lieu of a fee, we ask those who participate to please make a contribution to camp of an amount they see fit.

Contributions can be made before or after Sept. 19th, but camp staff will not handle money on the holiday itself.

If guests would like to help with set up and cleanup for the event, this can be done in lieu of a contribution.

# Who Says You Can't Live Forever?

Immortality is possible when you Create a Jewish Legacy by joining the 1902 Society!  
Your legacy gift ensures that Surprise Lake Camp is provided for—according to your wishes—  
for generations to come.

There are many ways to ensure a strong future for SLC, and you don't need cash!  
To learn more, please call us at 212-924-3131.

## Current Members of *The 1902 Society*

We are extremely grateful to the following individuals who have made  
provisions for Surprise Lake Camp in their estate planning.

Anonymous  
Walter Arnstein  
Celia Baczkowski  
Molly & Pat Benton  
Howie Berk  
Martin Blum  
Jordan Dale  
David Fleischner  
Jane Hersey Cuzzo

Irving Harris  
Nancy Hoffman  
Alan Hoffman  
Chuck Jainchill  
Stan Josephson  
Alan Kleiman  
Jerry Meyer  
Jim Meyer  
Judy & Michael Margulies

Linda Markowitz  
Ruth Messinger  
Robin & Larry Rubinstein  
Judy & Steve Sails  
Harvey Sills  
Steve Sommer  
Alice & Steve Turner  
Barbara & Michael Zbar

## Why Become a Member of the 1902 Society?

We'll let our current members tell you!

I was one of the first to sign up for the 1902 Society. I immediately saw that leaving money to SLC from my estate was a way to ensure I have enough money to live on and take care of myself with, but also afforded me the opportunity to leave a lasting legacy in the form of funds for Surprise Lake Camp. I don't look on it as taking money from my children, but as a way of providing them with an important legacy in terms of the value of tzedakah in my life.

-Linda Markowitz, Esq.



Joining the 1902 Society took but a moment in terms of the conceptual decision. However, picking the type of gift which I will use will take a little longer to decide.

The conceptual decision was easy because of my feelings towards SLC. I attended camp in the early to mid 1950's. I was there because of some sort of scholarship, my folks could not afford to send me to camp, and in addition to spending time in two different divisions over several summers I also was privileged to be in Work Camp with our head counselors Ray and Anita Berger. Many people have the same feelings and recollections as I do. Learning to swim and the thrill of passing the deep water test, learning about the outdoors on hikes to Beacon, etc., learning to get along with bunk mates and different personalities, taking up the guitar because of the influence of Pete Seeger at campfires, and especially the feeling of accomplishment in Work Camp as we completed needed projects around camp.

The type of gift is another matter. While there are a number of gift types to choose from, including Trusts and gifts from Retirement Plans, I narrowed it down to the following three:

1. A Bequest from my estate through my will
2. A Charitable Gift Annuity (CGA)
3. The use of a Life Insurance Policy

continued on next page . . . .

# 1902 Society Testimonials continued ...

My first choice is the CGA which when funded will provide my wife and myself with income for life and leave a gift for SLC. However, I am looking at the rates and monitoring them at this time. If the CGA does not work, my second choice is gifting some of the proceeds from my life insurance policy and of course this has to be done in conjunction with my estate plans. And the easiest, although last, would be a bequest through my will. Clearly there are many choices which might be made.

I signed the 1902 Letter of Intent (found on the next page) and at some point over the next year or two I will implement the choice. Please consider joining me in this effort and of course if you wish to ask me any questions, please feel free to email [jmeyer@grecoplanning.com](mailto:jmeyer@grecoplanning.com) or call (631) 390-4300.

Jim Meyer, Camper 1950's, Member, Board of Directors, Co-Chair, Fundraising Committee

.....

Surprise Lake Camp has played a very important role in the life of my family. My father, my daughters, and my grandson have all been campers—and all but my grandson have been staff members (he's too young). I was a camper and staff member in the 1950's. For me SLC was one of the two most formative institutions in my life, the other being my college. I learned cooperation, team spirit, group loyalty, personal Integrity, and how to be Jewish without being "religious" at SLC. So when I retired and started to set up my estate plans with my financial advisor, I discovered that for a small yearly investment, I could establish a Life Insurance Trust with a few of the most important institutions in my life as my beneficiaries. This guaranteed that SLC and two other institutions would be supported by me after I died (SLC will get half, and the other two institutions will split the other half). Because of the way the Trust was set up, the premium I had to pay to maintain the Trust became a tax deduction and cost me almost nothing. It makes me feel good to know that when I die, there will be money in the Surprise Lake endowment that will guarantee camper scholarships to those who are in need that I will have provided, just as my father received a scholarship in the 1920's when he first went to SLC.

-Rabbi Larry Rubinstein



.....



How could I not respond to your request to tell you and the camp's alums why I joined the 1902 Society? I have, literally, a five generation connection to this wonderful institution and I know my family treasures that connection as well and will be happy to see me leave some money for SLC. My grandfather, Israel Edwin Goldwasser was on the junior board of the 92<sup>nd</sup> St Y when several young men from that group walked the land that was to become the camp. He became its first board member and served as board chair. My mom subsequently joined the board, was the 13<sup>th</sup> and first woman board chair and spent some years on federation's camping commission. I remember early trips to SLC as her daughter, enjoying the outdoors while she and others toured the camp. It seemed natural, many years later, to enroll two of my three children as campers for several summers.

Later, when my mother asked me to join the board I agreed, and it was fun to be at board meetings with her, though it was several years before I had enough time between children and work to invest more energies in the on-going support of and planning for the camp. Then, still later, Larry Rubenstein convinced me to serve a term as board chair, arguing that I should do it while my mother was still alive. I am so glad I accepted when I did because it was just at the end of her life, and I think it made her proud to see me in that role. I had the privilege of serving as chair during the years that camp acquired full title to its own land and was proud to help in that endeavor.

And now, in recent years, my daughter has joined me on the board and two of my grandchildren [with more probably to follow] became enthusiastic SLC campers. Not a bad run....and certainly the reasons for joining the 1902 society.

Ruth W. Messinger, *President*  
*American Jewish World Service*



# 1902 Society



*"Just as my parents planted for me,  
so I plant for my children."*

## Letter of Intent

We hope you will tell us when you have included Surprise Lake Camp in your estate plans. We would very much like the opportunity to say "thank you" for your generosity. Letting us know of your intentions also helps us to be better aware of your particular interests and will allow us to keep you informed of developments at SLC which may be relevant to your planned gift. Recognition of your gift may also inspire generosity in others.

In support of the work of Surprise Lake Camp, I/we want to provide for future generations and to ensure the continuity of the services it provides.

This Letter of Intent represents my/our commitment to Surprise Lake Camp. It does not represent a legal obligation on my/our part and may be changed at any time.

**I/We will participate by:** (Please check the options you are considering)

- ☐ Making a bequest in my/our Will or Trust
- ☐ Investing in a Charitable Gift Annuity (CGA) with Surprise Lake Camp
- ☐ Naming Surprise Lake Camp as Beneficiary of a Charitable Remainder or Lead Trust
- ☐ Naming Surprise Lake Camp as a Beneficiary of a Life Insurance Policy
- ☐ Naming Surprise Lake Camp as Beneficiary under a Retirement Plan
- ☐ Directing my/our Foundation to make annual gifts beyond my/our lifetime(s)
- ☐ Optional: The amount of my/our planned gift is: \$ \_\_\_\_\_ or \_\_\_\_\_ % of my/our estate.
- ☐ I/We intend to include Surprise Lake Camp in my/our estate plans by the following date: \_\_\_\_\_
- ☐ I/We wish to become a member of the 1902 Society but wish to remain anonymous

Name (s) as you would like it (them) to appear (for Anonymous, please check the box above):

\_\_\_\_\_

Address: \_\_\_\_\_

City: \_\_\_\_\_ State: \_\_\_\_\_ Zip: \_\_\_\_\_

Phone: (       ) \_\_\_\_\_ Email address: \_\_\_\_\_

Signature: \_\_\_\_\_ Date: \_\_\_\_\_



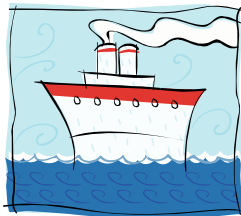
# COME SAIL AWAY . . . WITH SLC!

We are thrilled to offer our first trip to the Caribbean in December 2009. Join us for 5 nights of non-stop fun with friends and family. It will be an experience you remember for years to come!

**DECEMBER 27TH - JANUARY 1**

Departs from Miami on *Norwegian Dawn* [wwhammy@aol.com](mailto:wwhammy@aol.com)

Call Now - Space is limited!!!



Category	Fare	3 <sup>rd</sup> /4 <sup>th</sup> pax	Gov't Tax	Insurance
Balcony	989.00	549.00	74.69	89.00
Ocean View	859.00	529.00	74.69	89.00
Inside	719.00	499.00	74.69	89.00

★★★★★★★★★★★★★★  
 ★ **CRUISE ITINERARY** ★  
 ★ Miami 12/27/2009 ★  
 ★ At Sea 12/28/2009 ★  
 ★ Georgetown 12/29/2009 ★  
 ★ Cozumel 12/30/2009 ★  
 ★ At Sea 12/31/2009 ★  
 ★ Miami 01/01/2010 ★  
 ★★★★★★★★★★★★★★

\*Fares shown in U.S. dollars. Offers apply to select sailing(s). Fares are cruise only, per person, based on double occupancy. Government taxes and fees are additional.

Onboard service charges are additional and will be automatically added to your onboard account, and are subject to your discretion. See [ncl.com](http://ncl.com) for details. **IMPORTANT NOTICE:** NCL is suspending the company's fuel supplement for all voyages departing in 2009. The Company reserves the right to re-instate the fuel supplement for all guests should the price of light sweet crude oil according to the NYMEX (New York Mercantile Exchange Index) increase above \$65 per barrel. Offers are based on availability, capacity controlled, not combinable with other offers, subject to change or cancellation without notice, and may be withdrawn at any time. Other restrictions apply. NCL is not responsible for typographical errors or omissions. Ships' Registry: BAHAMAS and UNITED STATES OF AMERICA. ©2008 NCL Corporation Ltd. Travel Agency disclaimer: Rates are on US funds and includes NCF.

## Cabin Selections

All cabin rates are per person based on double occupancy; triple and quad cabins are on a request basis. Rates are per person. Government taxes and fees are subject to change.

## Deposits

Deposit Due by May 15: \$100.00 per person

Balance Due by: September 27

## Cancellation Policy

90 days: Deposit is forfeited 29-8 days: 50% 7 days or less: 100%

\*All cancellations must be received in writing or e-mail and a cancellation number must be issued before the cancellation is recognized.

Make checks payable to PJM Travel  
 and send to:  
 SLC Cruise  
 c/o Joel Kaufman (aka Whammy)  
 212-10 16th Avenue  
 Bayside, NY 11360

## Surprise Lake Camp Alumni Cruise (Deposit Due by May 15th!)

Passenger 1 Name: \_\_\_\_\_ Passport #: \_\_\_\_\_

Passenger 2 Name: \_\_\_\_\_ If child, age of child: \_\_\_\_\_ Passport #: \_\_\_\_\_

Passenger 3 Name: \_\_\_\_\_ If child, age of child: \_\_\_\_\_ Passport #: \_\_\_\_\_

Passenger 4 Name: \_\_\_\_\_ If child, age of child: \_\_\_\_\_ Passport #: \_\_\_\_\_

Passenger 5 Name: \_\_\_\_\_ If child, age of child: \_\_\_\_\_ Passport #: \_\_\_\_\_

Address: \_\_\_\_\_ City: \_\_\_\_\_ State: \_\_\_\_\_ Zip: \_\_\_\_\_

Telephone Number: Work: \_\_\_\_\_ Cell: \_\_\_\_\_ H: \_\_\_\_\_

E-Mail Address: \_\_\_\_\_

Cabin Preference: (circle one) Inside Ocean View Balcony Suite

Special Requests: (circle one) Disabled Twin Beds Queen/King Bed Other: \_\_\_\_\_

Explain: \_\_\_\_\_

Special Dietary Needs: \_\_\_\_\_

## Payment Information

Card Type: \_\_\_\_\_ Card #: \_\_\_\_\_ Expiration Date: \_\_\_\_\_

Name on Card: \_\_\_\_\_ Code: \_\_\_\_\_

## Authorization to Charge Credit Card

I hereby authorize Norwegian Cruise Lines to charge a deposit of \$100.00 per passenger.

Signature: \_\_\_\_\_ Date: \_\_\_\_\_

## **DEDICATED TO OUR 2008 SUPPORTERS**

The following pages are dedicated to the many friends who have supported Surprise Lake Camp in one way or another during 2008. Camp is blessed to have so many special people who care about its future. We received many different kinds of donations over the course of the year . . . time, money, services, products . . . the list is long! We hope we didn't forget anyone. If your name is not listed here and you would like to be acknowledged in a future issue, please do not hesitate to contact us. Please know that camp is very, very grateful for all the support we receive, and we hope that one day we will have a chance to thank everyone . . . in person, in print, or both!

**WE HOPE TO LIST YOUR NAME NEXT SPRING!**

## **Harry Henshel Scholarship Fund/Raise Your Match Campaign**

This past February, SLC completed a \$600,000 campaign. \$500,000 raised during this campaign was been credited to our scholarship endowment in one of the following four funds: The Harry Henshel Scholarship Fund, The Irwin Fleischer/Boys of Camp Mooween Scholarship Fund, the Jean Leiter Scholarship Fund, and the Jack Holman Scholarship Fund.

We are very touched by how everyone pulled together on this and enabled us to access all of the available matching funds. It is a huge accomplishment worth celebrating! There are many wonderful stories associated with this campaign.

Perhaps the most uplifting is that three separate gifts were given by 13 year olds!

Two of these children are current campers at SLC, and one is the son of a Board member.

The fact that we completed this campaign is a testament to the strength and generosity of the SLC Community. SLC will not only survive this difficult economic time, we will thrive.

We are especially grateful to the Henshel Family & Audrey Pritzker for donating the seed money for this campaign, and to the following donors for their participation with gifts or pledges of \$5,000 or more:

Estelle & Herbert Adler	Ben Gordon	Vivian Milstein
The Allman Brothers	Stephen Gordon	Stephen Nitkin
Samuel Altman	The Greenbaum Family	Audrey Pritzker
The SLC Alumni Association	Dayle, Joy & Patti Henshel	The Raizes & Schwartz Families
Moe Bordwin	Hirsch Family	Deborah Rose
Renee Borchardt	Hoffman Family	Mrs. Frederick P. Rose
CCUSA	Amy & Bruce Jaffe	Roger Sachs
Jordan Dale	Stan Josephson	The Shmerler Levy Family
Mel Finkelstein	Ele Klein in memory of Bernie Klein	Steve Sommer
Harold Grinspoon	The Lubin & Aglietti Families	Jeff Spiegel
Brandon Ralph & Daniel Gardner/Code & Theory	Judy & Mike Margulies	Aviva Spring Foundation
The Kermit Gittenstein Foundation (facilitated by Jay Jacobs)	Linda Markowitz	Mandy Storfer
Jill & Butch Goldsmith	The Messinger & Hayes-Messinger Families	Barbara & Mike Zbar
	Lee Meyer	
	Roslyn Milstein & Jerry Meyer	

## **Winter Camp Scholarship Fund**

The Winter Camp Scholarship Fund was started in 1998 by a group of Winter Camp Alumni. The fund was set up as an endowment for the purpose of providing scholarship support for campers. The following special Winter Camp Alumni supported this fund in 2008:

Bernard (Pat) Benton	Helene & Victor
Ben Gordon	Krauthamer
Ben Gulko	Bernard Patrusky
Bernard Hulkower	Seymour Wittek

## **JEFF HERMAN FUND**

This fund pays for camp's annual award given to the most outstanding male and female athletes on Teenside and helps to fund camper scholarships. Jeff Herman was a beloved Surprise Lake camper who became a New York City policeman and was tragically killed in the line of duty. The following people made contributions to this fund in 2008:

Estelle & Herbert Adler	Sy Lasher	Shelli & Larry Olinsky
Michael Berk	Arnold Mazur	Deborah & Michael Samori
Bebe Herman	Billy Newman	Robert Schecter
Arthur Jakubowitz		

# One Night of Hanukkah, One Summer of Memories



Each December, we send a mailing to our camper families entitled "One Night of Hanukkah, One Summer of Memories." We ask campers and their parents to give up one night of Hanukkah presents and instead make a contribution to camp. We are pleased to announce that this effort raised over \$650 for camper scholarships. We are grateful to the following families who demonstrated the Jewish value of helping others so beautifully. We hope even more families will participate this December!

Anonymous	The Grumet Family	Erica Pollet & Family	The Tyler Family
The Begelfor Family	The Lefcourt Family	The Pressman/Jackson Family	The Weinberg Family
Deven, Jill & Jonas Black	The Moskowitz Family	The Pullman Family	
The Brooks Family	The Peled Family	The Rubin Family	
Russell Cohen & Family	The Pfau Family	The Sampson Family	

## *And more "thank you's" to:*

- ✧ Billie Schwartz, our angel, for her extraordinary generosity.
- ✧ Haylynn Cohen, Chuck Jainchill, Lee Meyer & Steve Burke for sponsoring the 2008 Staff Banquet.
- ✧ The 2008 Main Event Sponsors, "Friends of Whammy": Jeff Berk, Nathaniel Bialek, Susan Goldman, Whammy Kaufman, Marc Schuman, Jason White.
- ✧ Douglas Sacks for sponsoring the 2008 camper contingent from Poland.
- ✧ Harris Ghersin for the windows he replaced around camp.
- ✧ Jonathan Cohen & Rachel Cooper who collected over \$23,000 at their B'nai Mitzvah, and with the help of UJA-Federation's Give a Mitzvah-Do a Mitzvah program, enabled Israeli kids to attend SLC in 2008.
- ✧ The 2008 Golf Outing Participants and Supporters. (see page 12 for a full donor list)
- ✧ Mike Zbar and the Golf Outing Committee without whom the event would never happen.
- ✧ Jane Hershey Cuzzo & Steve Cuzzo for obtaining so many terrific gift certificates for our Golf Outing Auction.
- ✧ The 2008 Hike-A-Thon Participants and Supporters.
- ✧ Michael "Satch" Saunders for running basketball clinics for our campers.
- ✧ The Pollet Family for purchasing t-shirts for the Girls Hockey Team.
- ✧ Ken Seligson and Jersey Lynne Farms for their donation of Poland Spring Water for Alumni Day.
- ✧ Joe Goldberg for sponsoring the Hike-A-Thon Breakfast.
- ✧ The Alumni Association and its volunteers for organizing the clothing sales on Visiting Days and Alumni Day.
- ✧ Just Born, Inc. for their fantastic and "sweet" donation of over 20 cases of Mike & Ike's candy and Peanut Chews chocolate.
- ✧ All the wonderful volunteers who help out on Docks Weekends, Visiting Days, and Volunteer Days.
- ✧ Jeremy Abrams for starting the Seth Fishman Hockey Fund, and those who contributed to it in 2008: Justin Bank, Seth & Lori Fishman, Jared Kramer, Craig Kramer.

### IN-KIND GIFTS

**Surprise Lake Camp has received in-kind gifts from the following people in 2008:** Michelle Albo, Stu Levin, Claire Ginsburg, Vanessa & Shane Morrison, Jonathan Kruk, Rose Inman, Gayle Schwartz, Harold Segal, Daniel Shapiro, Lee Posniack, Karen & Michael Scher, Drs. Paul Kaye and Steve Ho, Jack Leopold, Karen Ukraine/Hachette Gifting, Alex Dekhterman, Jessica Miller, Jon Miller, Bernie Karron, Lisa Young/Thoman Nelson Fiction, Asmodee Editions, Marla Loughran, Melissa Rubin, Bobbi & Harry Vogel, Glen Galligan, Babin Family, Susie Jainchill, Alan Kleiman, Minna & Melvin Lantner, Jordan Dale and Suzanne Moskowitz.

### HONOR GIFTS

**Surprise Lake Camp received gifts in honor of the following people in 2008:** Lee Kaplan, Steven Bleiberg, Mike Zbar, Lynn & Jules Kroll, Sheryl Kirschenbaum, Laurie Dobkin, Sam Carcamo, Jaime Zuckerberg, Alicia Fischweicher, Lorence Dipolitto, Richie Zbar, Nate Cahn, Robert Berk, Max Robkoff, Yasmin Yaar, Becca Cook, Diane Weiner, Jordan Watts, Mara Rubinstein-Tanzman and Jeff & Noah Tanzman, Dr. Michael Bush, Jay Bernstein, David Fleischner, Diana Wallerstein & Camp Scatico, Jordan Dale, Edward Berk, Larry Rubinstein, Steven Rod, Danya Birnbaum, Mrs. Joshua Grauer, Rabbi Claire, Mark Benmoise, FR 15 Counselors

### MEMORIAL GIFTS

**Surprise Lake Camp received gifts in memory of the following people in 2008:** Jack Forgacs, Rose Wasserman, Mr. Newman, The Estate of Gertrude Sanders, Stephen Silverman, Arnold Haft, Sam Peyer, Martin & Lillian Rubert, Aaron Morris, Joan Bernstein, Ilene & Harold Hoffer, Adam Arbitman, Barbara Markowitz, Kyle Walsh, David Sedacca, Carol Greif Saltz, James Heller, Walter Tannenbaum, Aaron Ehrlich

### VENDOR GIFTS

**Surprise Lake Camp would like to mention the following vendors who supported our Scholarship Fund in 2008:** AM Skier, Burke Electrical Contractors, John Neubauer/Audio Visual Productions, JTR Transportation Corporation, Pidala Oil Company, Security & Safety Training, Three River Canoe Corporation, West Point Tours, Inc.

### THE SURPRISE LAKE CAMP BOARD OF DIRECTORS

**Surprise Lake Camp wishes to express its sincere gratitude and appreciation to the Board of Directors of the camp.** These volunteers constantly work to ensure that camp remains the Best in Jewish Camping. In 2008, the Board contributed a total of \$435,000 in annual and capital gifts to SLC. We are proud that we have one of the best non-profit boards in the US!

## Breakneck Circle of Giving

### \$5,600 or more (up to \$45,000)

\*Jerry Meyer  
SLC Alumni Association

# 2008 ANNUAL GIVING

The gifts listed below were made between February 1, 2008 and June 30, 2008, in support of our annual Alumni Drive (totaling \$152,000) as well as Board of Directors (totaling \$60,000). We are very grateful to everyone for their generous contributions. The SLCAA expresses its deepest gratitude to the Alumni Association. The SLCAA also expresses its appreciation to the following donors.

\*Indicates Lifetime Member

## Hudson Overlook Circle of Giving

### \$3,000 or more (up to \$5,600)

Moe Bordwin	Queens Village Jewish Center
*Neil Diamond	
Peter Hirsch	Doug Sacks
*Stan Josephson	Paula Shmerler & Cindy Shmerler Levy
*Ruth Messinger	Charles Weinberg

## Five Days (\$550) at Camp or more (up to \$770)

*Jason Bailis	*Randi & Scott Lieberman	*Lee Reingold
Alex Berger	Phillip Lorber	Bruce Rubinger
*Donna Cohen Ross	*Louis Lowenstein	Mark Segal
Scott Ehrlich in memory of Aaron Ehrlich	*Steven Moses in memory of Stephen Silverman	Steve Sommer
*Matt Grubler	Robin & Danny Muskin	*Lisa Stulberger
Bruce Haber	in memory of Leon Muskin	*Susan & Matthew Tratner
*Heidi & Bruce Katz		

## Hinterlands Circle of Giving

### \$1,500 or more (up to \$3,000)

Cheryl & Jeff Coopersmith	*Mara Rubinstein-Tanzman & Jeffrey Tanzman
*Gregory Fox	Susan Spencer
*Joe Goldberg	*Sharon Manewitz in memory of Eva Kohn and Margaret Haber
*Ronnie & Bob Greenblatt	Zaref Family in memory of Elliot Zaref
*Jonathan Miller	Harvey Osher in memory of William "Billy Boy" Osher
*Suzanne Moskowitz & Jordan Dale	
*Stephen Nitkin	

## Four Days (\$440) at Camp or more (up to \$550)

Anonymous	Norm Friedman	*Andrew Kominik
Margery Arsham	*Darlene Haut	Judy & Mike Margulies
David Berkowitz	Warren Heaps	*Linda Markowitz
Steven Bleiberg	*Chuck Jainchill	*Nicole Pilevsky in memory of Milton Pilevsky
Camp Che-Na-Wah	*Eleazer Klein in memory of Bernie Klein	*Carol & Larry Seigel
*Tiby & Arthur Eilen		*Anne & Joel Zbar

## Bald Spot Circle of Giving

### \$770 or more (up to \$1,500)

*Robert Altabet	Linda Kane
Mitchell Brenner	*Mark Levine
*Elena & David Dale	*Paul Mermelstein
David Fleischner	*Lee Meyer
*Eddie Fluss	Carrie & Steven Miller
Joy, Dayle & Patti Henshel	*Roni & Jason Nadell
*Jennifer Herman & Adam Benalt	*Jessica Pollner
Michael Herson	Carl Reisner
Milton Herson	*Eve Rentzer & Marc Rentzer
Barbara Hirsch	*Robin & Larry Rubinstein
*Nancy & Alan Hoffman	*Bernard Saidel
The Hoffer-Samori Families in memory of Ilene & Hal Hoffer	Herb Skovronek
Marshall Hubsher in honor of Lillian & Sydney Hubsher	*Roz Sorkin in memory of Harry W. Sorkin
*Kathy & Mel Kalichman	*Jennifer Stein
	*Seth Stein

## Three Days (\$330) at Camp or more (up to \$440)

Anonymous	*Melanie Fleischman	*Peter Rubinstein
*Tracie Basch	Elliot Gemunder	*Alice & Steven Terner
*Jeff Berk	Stuart Karten	United Way
Michael Bush	Carrie & Dave Kerpen	Cheryl & David Wolff
Club Getaway	Sheryl Kirschenbaum	
*Seth & Lori Fishman	*Stuart Rachlin	

## Two Days (\$220) at Camp or more (up to \$330)

Anonymous	Amy Goldberg	Cecile & Stuart Levy
Estelle & Herbert Adler	*Jennifer Goldstein in memory of Stacey Lander	*Andrew Lobb
*Marilyn Bailis & Jerry Mark	Richard Gordon	*Blair Metrick
*Howie Berk	Jodie Gross	*Emilie & Andy Meyer
Thomas Berner	Michael Gruber	Jody & Mike Moraski
Carolyn & John Canova	Alan Kleiman	Ira Polinsky
*Michael Cohen	*Sy Lasher	Lawrence Rabinowitz
Beverly Crespi	*Maria & David Leibowitz	Abraham Rubin
Beth Dreifach	Dena & Elly Levine	*Robert Schecter
*Michael Fandal		Ira Schreck



# G SUPPORTERS . . .

January 31, 2009. This listing includes alumni who made gifts and Members who made gifts to the annual Board Campaign generosity. Surprise Lake Camp also wishes to express its gratitude for the contributions made to Surprise Lake Camp during 2008! of the Alumni Association

## Two Days at Camp continued . . .

Brandon Sherman  
\*Robert Steinhardt  
Joshua Stern  
\*Ilana Sussman

\*Marlene & Barry Vegter  
\*Diane & Allen Weiner  
\*Abbe Wittenberg

## One Day (\$110) at Camp or more (up to \$220)

Anonymous  
Joseph Abeles  
\*Steven Allen  
\*Debra Asher-Zitrin & Anthony Zitrin  
Celia Baczkowski  
Helaine Banner  
Rachel Baron  
Amy Beaumont  
Janeen Bellafore Levine  
\*Adam Benmoise  
\*Matt Berk  
\*Michael Berk  
\*Mindy & Jeff Berkon  
Nelson Braff  
\*Elyse Braun  
\*Marc Cohen  
\*Irene & Larry Cooperstein  
Janene Corda  
\*Donald Davis  
Alex Dekhterman  
In Memory of Irving Dorflier  
\*Susan Drucker  
Harvey Fader  
Karen & Donald Fagelman  
Jacqueline Ferrari in memory of Walter Tannenbaum  
Arnold Finkelstein  
Magan Forman  
\*Glen Frick  
Randi Fuchs  
\*Danielle Gilde  
Ira Goldfarb  
Abe Greenberg  
\*Lloyd Greene  
\*Andrea & Arthur Gruber  
Leslie & Sam Guttman  
Kathy & Bill Hochul  
\*Gayle Hoffman

\*Jason Hoffman  
\*Karri & Whammy Kaufman  
Doris Kaufman  
\*Space & Gene Kelly  
\*Daniel Kimmel  
Arnold Kinsler  
\*Avri Klemer  
\*Phyllis & Warren Kossin  
\*Ellen & Jeff Lambert  
\*Barry Leitman  
Rochelle & Steve Levenson  
\*Ellen Manobla  
Debra & Barry Margolin  
Lisa Mark  
\*Becky Melzer  
Susan Miller  
Janet & Irwin Moskowitz  
Billy Newman  
\*Shelli & Larry Olinsky  
\*Jerry Person  
\*Sheila & Ken Pollet  
\*Robert Rosenberger  
\*Judy & Steven Sails  
\*Nathan Salant  
\*Jean & Phil Schneider  
Henry Schoenfeld  
\*Karen & Kenneth Schwartzberg  
Sealed With a Kiss  
Julia & Mike Seltzer  
Allan Shepp  
Craig Solomon  
\*Lori Specpler  
Randi Sperber  
\*Aliza Spiegel Aseoff  
\*Jerry Statman  
\*Francine & Robert Stein  
\*Michael "Kiwi" Swan  
\*Jamie Umans  
\*Sanford Victor

## One Day at Camp continued . . .

\*Charles Wasserman  
\*Wendy & Stuart Waxman  
Howard Weissberger  
\*Lior Yahalomi

\*Jordana Zbar in memory of Lillian & Martin Rubert  
\*Barbara & Mike Zbar  
Shelly Zuckerman

## Gifts under \$110

Anonymous	Jeffrey Jackel	AJ Retig
Annette Amaya	*Michele Jacobson	*Michael Rieger
Bert Balaban	Ira Jaffe	Dara Robifker
Nalita Balram	Roberta Jainchill	Brian Rock
Jalyne Bassell	Susie Jainchill & Tsahi Gelardin	Janet & Donald Rosenthal
Joseph Baumoe	Jeanne Kaiser in honor of Ed Berk's 90th Birthday	*Sherry & Steve Rubin
Max Baustin	Sergei Kanevsky	Deborah & Michael Samori
Pearl & Harry Belkowitz	Rachel Karyo	MTA Employees
Blanche & Edward Berk	*Heidi & Bruce Katz	Murray Schwartz
Stacey Berkowitz	Jack Kaye	Joyce Schwartz in honor of Susan, Matt & Ian Tratner
Irene Blady	Brad Kessler	Barbara Schwarz
Jan Blau	Daniel Kitzes	*Ben Segan
Martin Blum	*Nathan Kolodney	Dovelet Shashoua & Jonathan Trambert
Sue Bookchin	Madeleine & Edward Koransky	Shomrim Society
Sherri & Nils Bordoff	Bernie Kosberg	Gary Silverman
*Jocelyn Borgner	Elihu Kover	Michael Singer
Eben Brown	*Robin & Gordon Kromprier	*Felice Solomon
Alan Buhler	Sandra Lansky	Leonard Spiegel
Don Canaan in memory of Sally & Louis Swerdlow	David Lansky	Mrs. Ethel Stern
Michele DiRuggerio	*Marty Laster	Adele Stern
Judith Elkin	Harriet Linder	Joan Sternberg
*Alvin Elkins	Stephen Lissberger	Dena Stevenson
Amie Ettinger	*Francine Lombardo	Joshua Suchow
Joseph Ezratty	Lorrie Markman in memory of Lawrence Markman	Ilene Sztorc
David Fox	Chris McGrath	Shauna Tannenbaum
Ken Freedman	Caryl & Mike Melasky	*Jennifer Toback in memory of David Mark Friedman
Robert Friedland	*Bruce Melzer	Allison Tratner
Marissa Garfinkel	Gayle Mestel in memory of Elaine & Joel Mestel	Dmytro Trofymets
Melissa Gordon	Jim Meyer	Phyllis Tucker
Amy & Arnold Graber	Keith Miller	Suzanne Weinick
*Robert Grader	Michael Mokotoff	Martin Weisfuse
Dave Green	Maya Moritz	Carl Weiss
Shira & Evan Greenblatt	Karen Morrison	Ellen & Bill Whelan
Gail Gremse & David Rose	Al Noe	Shoshanah Wolfson
*Michael Gutenplan in honor of Jennifer Weitz	Joey Novick	Scott Wynn in honor of Jordan Dale
Davida Haber	Sarah Onstott	
Leon Halio in memory of Moses Halio	Pasichow Family	
*Gwen & Larry Hamberg	George Penchina	
Walter Handelman	Felice Pilchik	
Allison & Michael Heitzner	Jared Pollet	
Thelma & Sanford Hochberg	*Joanne & Adam Pomerantz	
Annie & Ari Hoffnung	Lee Posniack	
Howard Horder	*Carol Prisamt	
Devon Isaacson	*Joanne & Jeff Reinhardt	





# 6th Annual Surprise Lake Camp Golf Outing Supporters

## Gold Sponsors

Cole Group Realty    MGJ Associates

## Bronze Sponsors

A.M. Skier Agency, Inc.  
Helen DeMario Foundation  
Schwalbe Family/Hilson  
Management Corp.

John O'Brien  
Morris A. Hazan Family  
Foundation  
Palin Family Foundation

PC Richards/14th Street, NYC  
Rochelle Pazer  
Charlotte Prince  
Young Woo & Associates

## Putting Green Sponsors

Arnone, Lowth, Fanning, Wilson  
& Leibowitz, Inc.  
Patti & Steven Coleman  
Alvin Dworman

First American Title Insurance  
Company of NY  
Paul Herman  
Jonathan & Barbara Kurtin

Dr. Allan Lans  
Adam & Joanne Pomerantz  
Suffolk Oral Surgery Associates, LLP

## Hole Sponsors

Cypes Agency  
Arlette Brauer  
Jay Greenbaum  
Jay & Lorraine Greenwell  
Remembering Bill Hallenbeck  
Nancy & Alan Hoffman  
Stan Josephson

Linda Kane & Peter Patch  
Peter M. Leung, CPA  
Jankoff & Gabe, P.C.  
Janover Rubinoit, LLC  
Julie Ratner  
Dr. Jonathan Riggs  
Sachs Investing Company

Serota Properties  
Steve Sommer  
Jerry Statman, DDS  
Superior Office Systems  
Woodmere Medical Associates  
Joel & Anne Zbar

## Friends

Gary & Adrienne Adelman  
Donatella Arpaia  
Backal's Restaurant, Bar & Lounge  
Shep Berkon  
Bill Levine Diamond Jewelry  
Bistro Chat Noir, NYC  
Bon Appétit—Barbara Fairchild  
Moe Bordwin  
BR Guest Restaurants  
Capital Executive Limousine  
Caryn Leigh Photography  
Cathryn's Dolcigno Grill  
Cellini Restaurant, NYC  
Club Getaway  
Jane Hershey Cuozzo & Steve Cuozzo  
Beverly & Lawrence Ceasar  
Maurizio De Rosa  
Neil Diamond  
Lisa Dorfman  
Helen & Steven Elliott  
Elmwood Country Club  
Mr. & Mrs. Stanley Feldman  
Four Seasons Hotel

Fusion Wireless  
Dominique & Michael Gast  
Debra & Steven Geller  
Joseph Goldberg, DDS  
Robert Guercio  
John Heimann  
Mr. & Mrs. Hymowitz  
Chuck Jainchill  
Sarah Jody  
Otto & Dorothy Juelich  
Ron & Jackie Kaminer  
Gary Kaplan  
Kenneth Kerman  
Dave Kerpen/The K Buzz  
Jeff Koenig  
Dr. Stephen Kurtin  
Ann Lapin, Mary Kay Consultant  
Dana Mark  
Michael & Judith Margulies  
Jim Meyer  
Vasilios Mesimers  
Mia Dona Restaurant  
Mid-Island Y JCC

Adrienne Orbach & Regina Colangelo  
Payson Estates  
Pera Mediterranean Brasserie  
Arlene Reed  
Seymour Reich  
Shari Riechelson  
Risk Management  
Scarsdale Ford  
Andrew Singer  
Michael Singer  
Jonathan Sollinger  
Craig Solomon  
Southern Hospitality  
Debbie & Steve Spiro  
Seth Stein  
Swift's Restaurant, NYC  
T Bar Steak & Lounge  
Dave Tratner & The NY Jets  
Matt Tratner  
Melissa Vogel  
Wiener & Biblo  
Michael & Barbara Zbar



# 2009 Alumni Drive and Dues Form



**Did you know that . . .**

- ☒ All gifts are fully tax deductible?
- ☒ All money raised directly benefits camper scholarships?
- ☒ You may be eligible to have your gift matched by your company?
- ☒ Surprise Lake Camp accepts contributions in memory or in honor of someone?
- ☒ You can make a gift of securities, donate a vehicle, or make a bequest in your will?
- ☒ You can support camp by having your credit card billed monthly?

**Please call the SLC Development Office at (212) 924-3131 to inquire or make a gift today!**

**Please help us to confirm our records by completing the following:**

Name: \_\_\_\_\_ Maiden Name: \_\_\_\_\_

Address: \_\_\_\_\_ City: \_\_\_\_\_ State: \_\_\_\_\_ Zip: \_\_\_\_\_

Birthdate: \_\_\_\_\_ Occupation: \_\_\_\_\_ Dates/Years at Camp: \_\_\_\_\_

Email Address: \_\_\_\_\_ Phone: \_\_\_\_\_

**Alumni Drive:** Gifts to the Alumni Drive are used to support this year's scholarships. *This is camp's greatest current need.*

**Alumni Dues:** Used to pay for Alumni reunions, scholarships sponsored by the Alumni Association, and other functions that support camp. Membership entitles Alumni to be kept informed of alumni events, receive quarterly Re-Echoes and receive a discount at Alumni activities for which a fee is charged. All members will receive a membership card and calendar of events.

**Alumni Association/Henny Cohen Scholarship Fund:**

This money goes toward an endowment to provide for future scholarships.

**Jeff B. Herman Memorial Fund:**

Pays for camp's annual award given to the most outstanding male and female athletes on Teenside and helps to fund camper scholarships. Jeff Herman was a beloved Surprise Lake Camper who became a New York City policeman and was tragically killed in the line of duty.

**Please Complete:**

**Annual Alumni Fundraising Drive—"Send a Child to Camp" (Please circle one)**

The Breakneck Circle \$6,200 or more	The Bald Spot Circle \$800 or more	3 Days at camp \$345
The Hudson Overlook Circle \$3,200 or more	5 Days at camp \$575	2 Days at camp \$230
The Hinterlands Circle \$1,600 or more	4 Days at camp \$460	1 Day at camp \$115

**Alumni Association Dues**

\$180 Lifetime, \$25 Annual.....\$ \_\_\_\_\_

Alumni Association/Henny Cohen Scholarship Fund .....\$ \_\_\_\_\_

Jeff B. Herman Memorial Fund .....\$ \_\_\_\_\_

Other Fund: .....\$ \_\_\_\_\_

**Total Amount Enclosed** .....\$ \_\_\_\_\_

☐ Please bill my credit card: (No AMEX, please)

Card Number: \_\_\_\_\_ Exp. Date: \_\_\_\_\_ Total Amount to Charge: \$ \_\_\_\_\_

Name on Card: \_\_\_\_\_ Billing Zip Code: \_\_\_\_\_ Signature: \_\_\_\_\_

☐ I'd like to make montly contributions with my credit card. Please bill me on the 1st of each month.

Month to begin: \_\_\_\_\_ Monthly Amount: \$ \_\_\_\_\_ Total Number of Months: \_\_\_\_\_ Total Donation Amount: \$ \_\_\_\_\_

☐ I prefer to save paper & postage. Please email me my/our acknowledgment letter. (please include email address above)

☐ I request that my gift be listed as "anonymous."

☐ I would like to speak with an Alumni Fundraiser and/or member of Surprise Lake Camp's professional staff about a special

**gift.** Surprise Lake Camp accepts contributions in memory or in honor of someone, gifts of stock, matching gifts, and planned gifts (deferred giving). Additionally, camp's long-term Capital Improvement Plan includes many opportunities for endowing scholarships, staff positions, or programs, as well as naming gifts for buildings or recreational facilities. We also welcome major gifts to fund donor-initiated projects.

**SURPRISE LAKE CAMP ALUMNI FUNDRAISING POLICY:** The Alumni Association is aware that some organizations raise money by bombarding donors with phone calls and mailings. We find this offensive. We ask our alumni for two things each year: annual dues and a gift to the Alumni Drive. From time to time, we also do special solicitations for capital projects. While we may send reminders to those who do not respond, we do not resolicit people during the same calendar year if dues have been paid and a gift has been made. In addition, we never give our address list to anyone, and we honor any request by an alumnus to block his/her name from our fundraising mailings..

**PLEASE RETURN TO:**

Surprise Lake Camp  
Alumni Association

Winter Address

Sept 1— June 15  
307 Seventh Avenue  
Suite 900  
New York, NY 10001  
212.924.3131

Summer Address

June 16— Aug 31  
Lake Surprise Rd  
Cold Spring, NY 10516  
845.265.3616

alumni@surpriselake.org



# Multi-Generational Families at SLC!

We are grateful to the following families who have demonstrated their loyalty and dedication to Surprise Lake Camp by making SLC a family tradition!

If you are part of a multi-generational family and would like to be listed here in future newsletters, please email [alumni@surpriselake.org](mailto:alumni@surpriselake.org). Feel free to send pictures!

## **Pressman/Jackson Family**

Leon Pressman 1930  
Lauren Pressman 1971-1974  
Stacey Jackson 2004

## **Helpern Family** Submitted by Laurence Helpern

Laurence Helpern 1971-1977  
Melanie Helpern 1971-1978  
Matthew Helpern 2001-2005  
Stephanie Helpern 2001-2005  
Andrew Helpern 2004-2005

## **Krauthamer Family** Submitted by Terri Abusch

Jules Krauthamer (zl) attended Winter Camp from 1946-1948  
Terri 1974-1980 and 1987-2006  
Amy 1976-1984 and staff in 1985  
Marni 1978-1986 and staff from 1987-1993  
Roy 1981-1989 and a lifeguard from 1990-1994

## **Rubinstein Family**

Submitted by Mara Rubinstein-Tanzman  
Benjamin Rubinstein - Winter Camper  
Laurence Rubinstein  
Eve Rubinstein  
Mara 1980-1989, 2003-2004, 2009  
Noah Tanzman 2007-present



## **Rosenberg Family** Submitted by Fred E. Rosenberg, Esq.

Fred Rosenberg 1971-72  
Jordan Rosenberg 1981-1998  
Andrew Rosenberg 1999-2005

## **Rubin Family** Submitted by Darrell Rubin Weinberg

Abraham (Abe) 1938-1941  
Darrell Rubin Weinberg 1964-1968 and 1969-1971  
Janice Rubin 1969-1973 and 1974-1975

## **Spechler Family** Submitted by Lori Wineser Spechler

Carol (Dallob) Wineser 1952 (?)  
Lori Wineser Spechler 1974-1978 and 1979-1980  
Haley Spechler 2003-2005  
Lily Spechler 2005-present

## **Ben Hollander – 4<sup>th</sup> Generation camper**

## **Wolff Family**

David Wolff (camper/staff in 70's)  
Alison Wolff 2005-present  
Rachel Wolff 2007-present

## **Rutkovsky/Bernstein/Wissner**

Anne Rutkovsky and Bernard Bernstein  
Daughter Jane Bernstein Wissner  
Granddaughters Rachel & Naomi Wissner are current campers

## **Haber Family** Submitted by Arthur Haber

Art Haber 1962-1966, Staff 1967  
Jeffrey Haber 1964 approx  
Davi Haber 2005-06, Staff 2007-08

## **Atwater Family** Submitted by Margie Atwater

Bob Atwater 1973-1980  
Ilana Atwater 1998-2005 jubilantly returning as Staff in 2009  
Benjamin Atwater 2003-present



# Scholarship Fund Spotlight

Did you know that Surprise Lake Camp has over 40 separate scholarship funds? Each fund was set up for a specific purpose or in honor or memory of a special person. Periodically, we spotlight specific funds to let you know more about how they were established and how they help SLC. If you have any questions about a specific scholarship fund, would like to make a contribution to one, or would like to create a new one, please don't hesitate to call Celia, our Director of Development at 212-924-3131 or email her at [celia@surpriselake.org](mailto:celia@surpriselake.org).

**The Asher Melzer Scholarship Fund** was established in 2001 and is used for camper scholarships. Asher served as the Executive Director of Surprise Lake Camp for 21 years and was the Director of Camping Services at UJA-Federation from 1976 until his retirement in 1993. As the dean of American Jewish camping, he mentored hundreds of professionals and touched the lives of thousands of children with his compassion, integrity, and devotion to the community. Not only did he help a new generation of Jewish children develop pride in their religious and cultural heritage, but he also assisted in establishing a summer camp in Hungary for Jewish children from throughout Eastern Europe.





Winter Address: (Sept 1—June 15) 307 Seventh Avenue—Suite 900, New York, NY 10001 212.924.3131  
Summer Address: (June 16—Aug 31) 382 Lake Surprise Road, Cold Spring, NY 10516 845.265.3616

### APPLICATION FOR LABOR DAY WEEKEND

Family Name: \_\_\_\_\_ Phone Number: \_\_\_\_\_

Address: \_\_\_\_\_ City: \_\_\_\_\_ State: \_\_\_\_\_ Zip: \_\_\_\_\_

Email: \_\_\_\_\_ Vehicle License Plate #: \_\_\_\_\_

Adult 1 Name: \_\_\_\_\_ Adult 3 Name: \_\_\_\_\_

Adult 2 Name: \_\_\_\_\_ Adult 4 Name: \_\_\_\_\_

Housing Options: Please check one (Turn over for housing descriptions)

Housing with Private Bathroom

Weekend/3 Nights (\$200) Per Night (\$85) # of Nights \_\_\_\_\_

\*While we do not guarantee houses, if you would like to request a specific house, please do so here:

Housing with Shared Bathroom Under the Same Roof

Weekend/3 Nights (\$175) Per Night (\$70) # of Nights \_\_\_\_\_

Housing with Toilet & Wash Facilities Nearby

Weekend/3 Nights (\$125) Per Night (\$55) # of Nights \_\_\_\_\_ TOTAL \$ \_\_\_\_\_

Child 1 Name: \_\_\_\_\_ Age \_\_\_\_\_ Living in: (circle one) camper cabin w/parents

Child 2 Name: \_\_\_\_\_ Age \_\_\_\_\_ Living in: (circle one) camper cabin w/parents

Child 3 Name: \_\_\_\_\_ Age \_\_\_\_\_ Living in: (circle one) camper cabin w/parents

Child 4 Name: \_\_\_\_\_ Age \_\_\_\_\_ Living in: (circle one) camper cabin w/parents

\*Children have the option of living in a camper cabin with other children and a counselor, or sleeping in the same cabin as their parents.

Children 5-15 years of age: Weekend: \$110 Per Night: \$45

Children under 4 years of age: Weekend: \$90 Per Night: \$40

TOTAL NUMBER OF ADULTS: \_\_\_\_\_ TOTAL NUMBER OF CHILDREN: \_\_\_\_\_

TOTAL DUE: \$ \_\_\_\_\_

TOTAL DEPOSIT: \$ \_\_\_\_\_ (A DEPOSIT OF \$50 PER PERSON IS REQUIRED WITH APPLICATION)

Cancellation Charges:

Before August 15: \$10 Per Person After August 15: NO REFUND

I would like to pay by: Visa Master Card Discover

Name on card: \_\_\_\_\_

Card number \_\_\_\_\_ Exp. date \_\_\_\_\_

Your signature: \_\_\_\_\_

You may also send a check payable to Surprise Lake Camp to one of the addresses above.

Full balance is due upon arrival at camp.



# Family Camping Weekend



**4 weeks of camp  
squeezed into  
3 days of fun!**

**Labor Day Weekend  
Sept. 4 - Sept. 7, 2009**

# Now is the Time to Register for LABOR DAY WEEKEND 2009!

Nestled in the heart of the Hudson Valley, Surprise Lake Camp is the perfect setting for the final hurrah of the summer. It is a beautiful place to spend Labor Day Weekend at an affordable price, and only an hour from New York City.



There are activities for children only, for adults only, and for the entire family. The program offers the opportunity to enjoy a wide range of traditional camp activities including swimming, boating, climbing tower, high ropes, crafts, sports, tennis, hiking, and much more. Highlights include our highly popular "Country Fair" featuring square dancing, piñata games and fresh popcorn, our "Adults Only" lounge, our ever popular Bar-B-Q, as well as our "sing around the campfire" night, complete with roasting marshmallows.

Have your family join our family and make 2009 the Labor Day you'll always remember! This year promises to be better than ever, and housing is now being allocated on a "first come, first served" basis, so hurry!

If you have any questions, please call us at 212-924-3131 and ask for Sheryl. Alternatively, email [Sheryl@surpriselake.org](mailto:Sheryl@surpriselake.org).



# SAMPLE SCHEDULE

8:30 A.M. – 10:00 A.M. Buffet Breakfast  
9:30 A.M.

Group Aleph – Playground  
Group Bet – Arts & Crafts  
Group Gimel – Ga Ga  
Teens – Hike

10:00 A.M.  
Adults – Meet at Flagpole for hike to Breakneck  
10:30 A.M. – 12:30 P.M. Waterfront Open  
10:30 A.M.

Group Aleph – Playground  
Group Bet – Fun Field Games  
Group Gimel – Arts & Crafts  
Teens – Zip Line

11:30 A.M.  
Family Tie-Dye! Everyone is welcome to tie-dye their clothes at Arts and Crafts  
1:00 P.M. – 2:00 P.M. Buffet Lunch  
2:30 – 5:00 P.M. Waterfront open for all  
2:30 P.M.

Family Olympics!  
Group Aleph – Games in the Gym  
Group Bet – Playground and/or Soccer  
Group Gimel – Soccer  
Adults and Teens – Softball

Adults Only – Yoga. Meet at Mainside Gazebo  
4:15 P.M.  
5:30-7:00 P.M.

Adults only – Arts and Crafts  
BBQ Dinner!!!!

7:00 P.M. Country Fair  
7:30 P.M. Square Dancing for kids  
8:30 P.M. Square Dancing for adults  
8:15 P.M. Evening Activity for kids  
10:00 P.M. WALK IN MOVIE,  
(at the Eddie Cantor Theatre)  
Adults Only – Games Galore in Canteen

**DATES:**  
Dinner on Friday, September 4 through Lunch on Monday, September 7.

## ADULT RATES

### Housing with Private Bathroom

These cabins and houses are considered the upper-tier housing and are where our summer supervisors stay. All houses have at least one private room that sleeps two with private bathrooms and showers. Houses are also equipped with refrigerators, dressers and/or closets. Most have full sized double beds, and some have kitchens.

**Weekend: \$200 Per Night: \$65**

### Housing with Shared Bathroom Under the Same Roof

These large, open rooms are in a duplex-style building and during the summer house our youngest campers. For Family Camping Weekend, one family occupies the top floor, another family the bottom floor, and the toilet and showers are on the middle level. Each floor has a private room that sleeps two. The open rooms have 12 camper cots and cubbies for clothing and personal property.

**Weekend: \$175 Per Night: \$70**

### Housing with Toilet & Wash Facilities Nearby

During the summer, this is where we house our campers who are 11 years of age and up. These small cabins sleep four people and have cubbies for personal property. Three cabins are connected by porches and a toilet and sink can be found at the end of one. The Unit Washhouse is located nearby.

**Weekend: \$125 Per Night: \$55**

## CHILD RATES

### Children 5-15 years of age

Weekend: \$110 Per Night: \$45

### Children under 4 years of age

Weekend: \$90 Per Night: \$40

The rate for children includes childcare during the day and babysitting at night.  
Tips for exemplary staff members are encouraged.

There is a facilities fee of \$25 per family for those who want to spend only the day in camp.

No guests will be permitted on camp grounds without paying this fee. This fee does not include meals. Meals may be provided at an additional cost.



# NEW FOR 2009!

\*Kayaking \*Name Tag Challenge  
\*Talent Show (come prepared!)  
\*Camp-style Shabbat service on Friday night (optional)





# 2009 Volunteer Day Pictures!

Thank you to the close to 200 awesome volunteers who came out for a record-breaking hot day to help prepare camp for the Summer of 2009! Here are some great snapshots of the day taken by the one and only Whammy.



## From an email received Sunday evening:

I have been so lucky in my professional life to have been a part of two great organizations that do amazing work with kids: KIPP NYC and Surprise Lake Camp. Today I had the amazing pleasure of bringing the two worlds together as I brought four KIPPsters to Surprise Lake Camp's Volunteer Day.

Ashley, (KIPP STAR Class of 2012), Nafi (KIPP Academy Class of 2013), Abby (KIPP Academy Class of 2013), and Tracey (KIPP Academy Class of 2013) spent the day with wheelbarrow, shovel, rake, and pitchfork as well as a tremendous amount of Grit, Empathy, and Curiosity spreading woodchips all over the Surprise Lake low ropes course, climbing tower, and playground. Watching four kids give up their Sunday to give a day of tough physical labor to a place they had never been was truly inspiring.

The highlights...

- Nafi refusing to take a water break until three more wheelbarrows of mulch had been moved to an element
- Abby raking and shooing insects non-stop from 9:30 until lunch
- Tracey 5 minutes in saying, "Everyone is so nice here"
- Ashley excitedly telling me she was going to "friend" some of the SLC kids she worked with on Facebook
- Watching them all sing Read Baby Read, roll their numbers and sing the Difference of Squares song while mulching away
- Their displays of appreciation for the barbecue and their Volunteer Day t-shirts
- And hearing all four ask if they could apply for jobs there one day

I want to thank my friends at Surprise Lake for welcoming us with open arms but most of all I want to thank the kids for their tremendous demonstration of what it means to be a true KIPPster. My hope from today is to turn this into an annual tradition with more and more KIPPsters each year.

Have a great night.

Best...Mitch Brenner (pictured at right with his KIPP students)

## Email received Monday morning:

Good Morning SLC

All three 8<sup>th</sup> graders are proudly sporting their Volunteer day t-shirts! :-)

All three seem to be able to move their arms. The Assistant Principal...not so much!

The wonders of youth.

Thanks again for a great day.

Mitch



# ALUMNI DAY 2009



Friends, Swimming, Boating,  
Round-Up, Alumni Gear for Sale, BBQ,  
Photos, the Camp Museum and so much more. . .

## **Don't Miss Out!**

Our Alumni Days have been growing and are better than ever!  
If you haven't been to one recently, then why not make it up this summer?  
It will be held on Sunday, August 2, 2009 at camp, rain or shine.  
Bring your families, your smiles, your memories, and prepare for a  
wonderful trip down SLC Lane.

## **\*\*\*Changes for 2009\*\*\***

Most of the Mainside campers will be out on trips or hikes this year, so please DO NOT plan on visiting with your children on Alumni Day. Alumni Day is NOT a Visiting Day.

You have to be at least 16 to come to Alumni Day unless you are with a parent and you stay in the company of that parent the entire time.

## **General Rules for Alumni Day**

1. Campers will not be allowed to be taken from program to visit with their families. Please do not attempt to do this.
2. No pets or alcohol permitted on grounds.
3. All parking is on the ballfield.
4. Smoking is permitted in the Laundry area behind the Main Building only (and never near campers).
5. Alumni may not enter living quarters of staff or campers without an Alumni Board member present.
6. Alumni should not socialize with staff while they are working or disrupt the camp routine.
7. All dining rooms are off limits to all alumni and visitors.
8. Swimming and Boating will be available on the Mainside waterfront. A deep water test will be required for deep water swim (even if you used to be a lifeguard!) Please listen to the lifeguards while at the lake.



# Alumni Day Eve . . . Start the festivities early!

We're gonna rock, we're gonna roll,  
We're gonna bop, we're gonna bowl . . .  
If you are planning on staying in the neighborhood the night before Alumni Day, join us for a nostalgic night at the Fishkill Bowling Alley!

8pm-Midnight on Saturday, August 1, 2009

Schneider's Fishkill Bowl

Located on Rte. 82, minutes from I-84

845-896-7830

<http://www.fishkillbowl.com>



## **Blocks of rooms have been reserved at the following hotels:**

### Courtyard by Marriott

17 Westage Drive

Route 9 & I-84

Fishkill, NY

845-897-2400

15 rooms:

Single \$109, Double \$109,

Triple \$129, Quad \$129

Cut off date: July 3



### Holiday Inn

542 Route 9

Fishkill, NY

800-448-2296

20 rooms:

\$119 for Kings and Double Queens

Cut off date: July 1

Group Name: SLC Alumni

Group Code: SLC

# Wishing You Could Spend A Night In Camp?

(With No Kids???)

## **YOU CAN . . . AT THE SPRING ALUMNI OVERNIGHT!**

On Saturday, May 16th to Sunday, May 17th, we relocate the party from your typical NYC or Long Island venue up to Surprise Lake Camp. The springtime weather in Cold Spring is warm enough to fully appreciate the night, but not so hot where you'll need to run out to Walmart to buy another \$10.99 box fan. The highlight of the weekend is the party on Sat. night, which includes a bonfire, BBQ, unlimited refreshments, music, and of course, great people! The event will take place in the area surrounding Teen Dining Room, a-la Club Surprise, so yes, you can start brainstorming about those paper-plate awards now! The event is open to everyone over the age of 21. ID's will be checked. Sorry, no children – if you want to bring your children for a camp experience, join us for Labor Day!

Your entrance fee will cover just about everything you could need during your time spent in camp, including food and drinks for Saturday evening. So, don't listen to your friends who tell you that you're too old for camp, and come rediscover the fun you experienced as a camper or counselor!

**How much?** \$75 (You must rsvp in advance!) Includes dinner, snacks, drinks and breakfast.

### **THREE WAYS TO REGISTER:**

1. Visit <http://alumniovernight.eventbrite.com/> to register and pay on line.
2. Send payment to: Surprise Lake Camp Alumni Overnight, 307 Seventh Avenue, Suite 900, New York, New York 10001.
3. You can also pay by credit card over the phone by calling Celia in the camp office – 212-924-3131.

For further information please email [alumni@surpriselake.org](mailto:alumni@surpriselake.org).



## SLC's Community Corner: YOU CAN ADVERTISE IN RE-ECHOES TOO!!!

Submit your business card or advertisement to [alumni@surpriselake.org](mailto:alumni@surpriselake.org).

The rates for advertising in each issue are as follows:

**Eighth Page: \$25**

**Quarter Page: \$50**

**Half Page: \$80**

**Full Page: \$120**

### MATCO JEWELRY CO



*Manufacturers of Fine  
Jewelry*

Howie Berk 917.207.4257  
[MATCOJLRY@AOL.COM](mailto:MATCOJLRY@AOL.COM)

**MICHAEL ZBAR, CPA**

**MICHAEL ZBAR AND PETER M. LEUNG, LLP**  
CERTIFIED PUBLIC ACCOUNTANTS

**120 NORTH MAIN STREET, NEW CITY, NEW YORK 10956**

**TELEPHONE: (845) 639-3100 • (212) 398-9111**

**FAX: (845) 639-3180**

**E-MAIL: [zbarleungcpa@aol.com](mailto:zbarleungcpa@aol.com)**

Joseph S. Goldberg, D.D.S., L.L.C.  
Implant, Laser & Cosmetic Dentistry  
[www.babylonlaserdentistry.com](http://www.babylonlaserdentistry.com)

789 Deer Park Avenue • North Babylon, NY 11703  
tel: 631.321.1235 • fax: 631.321.1164  
emergencies: 917.781.8909

**GREENBERG NICOLETTA & STEIN LLP**  
ATTORNEYS AT LAW SPECIALIZING IN REAL ESTATE

**SETH STEIN**

370 LEXINGTON AVENUE, 24TH FLOOR, NEW YORK, NY 10017

(212) 532-5533 \* FAX (212) 532-5501

EMAIL: [sstein@gnslawfirm.com](mailto:sstein@gnslawfirm.com)

## CITYPULSE PRODUCTIONS

### VIDEOGRAPHY

AFFORDABLE AND PROFESSIONAL

**(212) 561-9762**

Specializing in Weddings and  
Bar/Bat Mitzvahs in the Tri-State area.  
Filming, Editing, Custom-packaged DVD  
with Motion Chapters and Highlight  
Montage included.



VISIT OUR WEB SITE FOR SAMPLES,  
REFERENCES AND A FREE QUOTATION

**[WWW.CITYPULSE.TV](http://WWW.CITYPULSE.TV)**



*Jersey Lynne  
Farms, Inc.*

Tel. (718) 649-6730

Fax. (718) 649-1256

8801 Foster Avenue

Brooklyn, NY 11236

Email: [kseligson@jerseylynnefarms.com](mailto:kseligson@jerseylynnefarms.com)

### Wholesale Distributor

Quality A Eggs

Dairy Products

Deli Provisions

Meat

Frozen Food

Candy

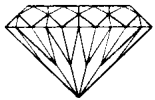
Beverages

Paper, Plastic, Restaurant Products

**Kenneth Seligson**

Ext. 149

## Bill Levine Diamond Jewelry



62 West 47<sup>th</sup> Street, Suite 1608  
New York, NY 10036  
Tel: 212-719-1487  
Fax: 212-719-1167  
Toll Free: 800-551-8386

Matthew Tratner

Cell: 917-940-5513

## FANCY FACES

For all of life's special occasions...

Lisa M. Griggs  
Certified Make-up Artist

Weddings, Proms,  
Bar/Bat Mitzvas,  
Make-up Parties

646.387.3668

LMG217@hotmail.com

Johanna pinzler

singer

available for weddings and other events  
212 - 501 - 2754  
johanna@pinzler.com



[www.carynleighphotography.com](http://www.carynleighphotography.com)



caryn leigh posnansky  
917.544.2066  
[caryn@carynleighphotography.com](mailto:caryn@carynleighphotography.com)



**vocal ip networkx**  
IP Telephony Solutions & Services

Vocal IP Networkx is a converged network solution comprised of your Local, Long Distance, & Data Services. We have the ability to provide companies such as yours savings up to 50% annually.

A portion of any proceeds from this ad will be contributed to Surprise Lake Camp.

For detailed information please contact:

Eugene Laykhtman

Direct: 646 329-9680

[www.vocalipx.com](http://www.vocalipx.com)

307 Seventh Avenue, New York NY 10001

# SOOO Many Ways to Keep in Touch with SLC!

Email: [alumni@surpriselake.org](mailto:alumni@surpriselake.org)

Web: <http://surpriselake.org/>

Blog: <http://143slc.wordpress.com/>

Facebook: <http://tinyurl.com/slcrules>

Twitter: <http://twitter.com/SurpriseLake>



# Ways You Can Support the Golf Outing . . . Without Writing a Check!

By Jane Hershey Cuzzo—Reprinted from Spring 2008 issue

Even though it's still over four months away, plans for the 2009 Golf Outing are well under way. This year's event promises to be even better than before. Besides the great fun of testing one's skills on the green and the gathering of friends old and new over fabulous food and drink, the event offers participants a chance to bid on auction items which raise needed funds for camp. While last year's Golf Outing raised over \$32,000, that amount could easily be doubled, or even tripled with just a little more support and creativity from camp alums and supporters.

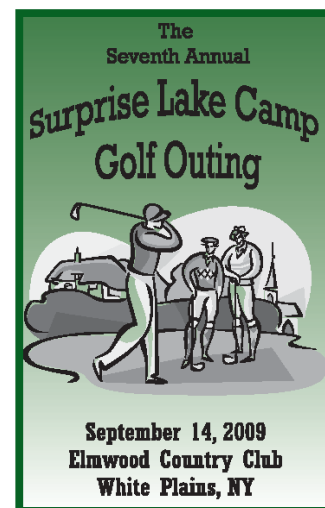
The participants in last year's auction got the chance to bid on dinners at some of Manhattan's finest restaurants. There was also a chance to win a new car with a hole-in-one. But there are many other experiences and services out there that people would find tempting.

- ◆ Do you know anyone who teaches guitar or yoga? They could donate lessons!
- ◆ Does your business have an affiliation with a health club that might be willing to donate a free membership?
- ◆ Do you or your business have corporate connections to Lincoln Center, the Papermill Playhouse, Disney World, or the Museum of Modern Art? Tickets and complimentary passes are always snapped up!
- ◆ Do you have a connection to someone who can donate a day of pampering at a local salon or spa?
- ◆ Do you work in the television or music business? You can get some autographed items or backstage passes to a filming or concert!
- ◆ Do you have a favorite wine shop that does tastings? Approach them about co-sponsoring an evening wine-tasting event with a local restaurant!

What most people don't realize is that many businesses are actually flattered to be asked to donate their goods for a good cause. It's a great way for stores and restaurants to introduce themselves to new customers, too!

Is there anyone you know who might add a touch of excitement to the Golf Outing itself? A round of golf with a well-known author, business leader, or entertainment personality would bring everyone running to tee up. And don't forget potential support from your local chamber of commerce and local representatives. How about a "key to the city" for the day where the highest bidder would get preferential treatment, discounts, and other perks from everyone in the neighborhood?

My own experience with approaching potential auction donors has been a positive one. Several participants were interested in Surprise Lake for their own children—others wanted to do more in the future. So don't be afraid to think outside box—or beyond the fairway. Here's to a great 2009 Golf Outing!



**SURPRISE LAKE CAMP  
ALUMNI ASSOCIATION  
307 SEVENTH AVE, SUITE 900  
NEW YORK, NY 10001**

**Return Service Requested**

Non-Profit Org.  
U.S. Postage  
PAID  
New York, NY  
Permit No.  
5851

*It takes money and resources for the Alumni Association to mail you this newsletter.  
Please let us know if you move, get multiple copies, or would like to be removed from our mailing list!*