

# SURPRISE LAKE CAMP ALUMNI ASSOCIATION

**Winter Office:**  
307 Seventh Avenue  
Suite 900  
New York, NY 10001



**Phone:** (212) 924-3131  
**Fax:** (212) 924-5112  
[www.surpriselake.org](http://www.surpriselake.org)  
[alumni@surpriselake.org](mailto:alumni@surpriselake.org)



# RE-ECHOES

Spring 2012

ISSUE #1

Editor: Celia Baczkowski

## Upcoming Camp Events . . . Mark Your Calendar Today!

Volunteer Day ..... Sunday, April 29, 2012  
SLC Open Shabbat Service ..... Saturday, May 19, 2012  
Spring Alumni Overnight (21+) ..... Saturday, May 19, 2012  
Alumni Day ..... Sunday, July 22, 2012  
Labor Day/Family Camping Wknd ..... Friday, August 31 to Monday, Sept 3  
SLC Rosh Hashanah Service ..... Monday, September 17, 2012  
1st Annual SLC Sukkot Program ..... Sunday, September 30, 2012  
1st Annual SLC Passover Seder (2nd Night) ..... Tuesday, March 26, 2013

## ***No Surprises Here . . .***

## ***110th Anniversary Gala A Smashing Success!***

Surprise Lake Camp celebrated its 110th Anniversary with a gala at the Marriott Marquis on Saturday, March 10, 2012. Over 400 alumni, supporters, and friends gathered to honor 110 years of camping and congratulate three special people who have given years of service to camp.

The night featured delicious kosher food, retro arts & crafts stations, photo collages from the camp museum, a section honoring Surprise Lake's past Camp Directors, a photo booth, a silent auction, a slideshow, and dancing. Like every good camp event should, those still standing at 1am ended the party with a round of Nestling!

One of the honorees, Joy Henshel, a member of the Board of Directors for 50 years said, "Twas a night to remember! It has been an honor and a pleasure to see Surprise Lake grow and change over the past 50 years. I am thrilled to have made a difference in the lives of young people for these many years." Another honoree, Joel "Whammy" Kaufman, a memorable staff member at camp for almost 40 years, said "making friends at summer camp creates a lifetime of experiences and memories that you can't get anywhere else. Surprise Lake has helped shape my life."

(continued on page 2)



**Three Generations of SLC Alumni—  
Miriam, Amani, and Ruth!**



**Honorees Joy Henshel and Joel  
"Whammy" Kaufman**

**SURPRISE LAKE CAMP  
ALUMNI ASSOCIATION**  
307 Seventh Ave, Ste 900  
New York, NY 10001  
Phone 212.924.3131  
Fax 212.924.5112  
Email: [alumni@surpriselake.org](mailto:alumni@surpriselake.org)

**President**

Joe Goldberg

**Vice Presidents**

Howard Berk  
Chuck Jainchill  
Seth Stein

**Treasurer**

Robin Krompfer

**Board of Directors**

Celia Baczkowski  
Jeff Berk  
Marissa Garfinkel  
Scott Gilden  
Matt Grubler  
Gayle Hoffman  
Nancy Hoffman  
Avri Klemer  
Dena Belkowitz Levine  
Blair Metrick Klaff  
Jason Nadell  
Sheldon Osinoff  
Kenny Pollet  
Sheila Pollet  
Talia Schneider  
Jeff Spiegel, D.D.S.  
Mandy Storfer  
Michael Tenenhaus  
Matthew Tratner  
Jennifer Weitz  
Anne Zbar  
Barbara Zbar  
Joel Zbar  
Jordana Zbar

**Past Presidents**

Howard Berk  
Henry A. Cohen\*  
Alvin L. Elkins  
Herbert A. Fishman  
Irving Gilbert\*  
Arthur Jakubowitz  
Phillip Levinowitz  
Sam Peyer \*

**President Emeritus**

Joel "Whammy" Kaufman

\*Deceased

Any newsletter submissions may be mailed directly to the editors. Please notify us of any corrections.

*The Alumni Association,  
established in 1961 for the  
Betterment of Camp*



## Message from the President

Nothing else awakens the feelings of an upcoming camp season like the spring issue of Re-Echoes! As soon as I get the email from the editor that it is time for me to write a President's Message, I cannot help but reminisce about camp, my SLC family, and all the wonderful times we have shared together.

What an off-season we've had!

The Hike-A-Thon, the SLC Super-Bowl II, the NCAA March Madness Pool, and 3 on 3 Basketball Tournament were great fun, and all of these events helped to raise money for camp scholarships. I extend a heartfelt THANK YOU to the organizers and participants. Each year these events grow and improve with help from alumni like you. Please keep attending and supporting these events – YOU are what make them great!

SLC celebrated its 110<sup>th</sup> Anniversary with a spectacular gala at the Marriott Marquis NYC. It was wonderful to have the opportunity to see and talk so many of my camp contemporaries. Congratulations again to our honorees, Milton Herson, Joy Henshel, and Joel "Whammy" Kaufman. Of course, the 110<sup>th</sup> celebration will continue throughout the summer with special events being planned for the kids and staff. Keep an eye and ear out for details about [Alumni Day, July 22, 2012](#).

The next event the SLCAA is hosting is the Spring Overnight on May 19-20, 2012. Come hang out with friends in camp, just like the old days (with a little twist). For more information about this event, please visit camp's website at [www.surpriselake.org](http://www.surpriselake.org) or visit camp's Facebook page at [facebook.com/surpriselake](https://www.facebook.com/surpriselake).

CONTINUED ON BOTTOM OF PAGE 3 . . .

### 110th GALA A SMASHING SUCCESS . . . CONTINUED FROM FRONT PAGE

The final honoree, Milton Herson, (1927-2011) was an incredible advocate for SLC. Although Milton passed away in September, his family attended the gala and accepted the honor on his behalf. His wife, Arlene Herson, said "Milton would have been so proud to be here and to share his stories about his years at camp." Each honoree was presented with a crystal sailboat to commemorate this milestone.

During the event Executive Director, Jordan Dale, went public with a capital campaign that the leadership of the camp has been developing. Almost \$1.8 million has already been raised from the Board of Directors and targeted alumni. "The campaign's next phase begins now, with a total goal of \$3 million," said Mr. Dale. "This addition to our endowment will help ensure our ability to provide scholarships for the next 110 years." [For more information about this capital campaign, see page 5]

SLC will continue to celebrate its 110<sup>th</sup> Anniversary throughout the summer of 2012 with special giveaways for campers & staff, birthday parties, and surprise guests and events. It will be a summer to remember for everyone involved!

**More photos from the 110th Gala can be viewed at**  
<http://photos.whammywow.com/slcalga>





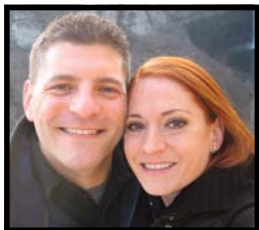
# ALUMNI HAPPENINGS



☆ Mazel Tov to Jerry Meyer on the birth of his second grandchild, Forest Alexander Meyer-Resnik, (pictured left) in December.

☆ Mazel Tov to Moran, Murray, and big sister Ma'ayan on the birth of Meitar Lantner (pictured right) on January 7th. She weighed 7 lbs 1 oz.

☆ Mazel Tov to Jerry Person on the birth of his second grandchild, Levi Paul Whippo, in December. He weighed 7.1 lbs and measured 17 1/2 inches.



☆ Mazel Tov to Jennifer Weitz (pictured left) on her February 29th engagement to Benjamin Wind.

☆ Mazel Tov to Wayne Schneider (pictured right) on his marriage to Franchesca Cordero on March 10th.

☆ Mazel Tov to Adam Benmoise on his February 18th engagement to Sara Levine. A video of the proposal can be viewed on Youtube!  
<http://www.youtube.com/watch?v=PAivyzPRVUc>



☆ Mazel Tov to Becky Melzer (pictured left) on her engagement to Kimmie Chabus on December 25th. Their wedding is planned for September 30, 2012.

☆ Mazel Tov to Randi Goodman (pictured right) on her upcoming wedding to Jodi Argentino on April 29, 2012.



☆ Mazel Tov to Jay Greenbaum on being voted 2011 Person of the Year by the Nassau Herald. We are so proud to have him as a member of the SLC Family! More info can be found at <http://www.liherald.com/fivetowns/fivetowns/stories/Nassau-Herald-Person-of-the-Year.37926>

☆ Mazel Tov to Rabbi Peter J. Rubinstein for being named #3 on America's Top 50 Rabbis List by The Daily Beast.

## May Their Memories Be A Blessing . . .

☆ Our deepest sympathies to the family of Ben Gulko, Winter Camper, who passed away in December. His son, Ralph, wrote "I regret to inform you that my father, Benjamin Gulko, passed away December 8, 2011 at age 93. He always remembered Surprise Lake Camp with fondness, and the family was convinced that the year he spent there (1931?) saved his health."

☆ Our deepest sympathies to Board Member, Amy Goldberg, and her family on the loss of her mother, Florence (Feigy) Goldberg.

☆ Our deepest sympathies to Jacqueline "Teva" Canton and her family on the loss of her father, Harry.

## **Message from the President continued . . .**

Last Alumni Day, we raised over \$5,000 AND had 50 new members join the Alumni Association as part of the SLCAA's 50<sup>th</sup> Anniversary Campaign, raising a total of over \$10,000! I am hoping that this generosity and love for SLC will remain prevalent this summer as we strive to make Alumni Day a day to give back. The SLCAA can only accomplish the things we do for the children of camp through the contributions and donations of our alumni. There are thousands of SLC alumni all over the world, and if you are reading this, chances are that you are one of them! Please remember what SLC did for you as a child and pledge to give back to a new generation!

If you cannot make it up to camp this summer for Alumni Day, then please consider a gift to the Annual "Send A Child to Camp" Alumni Drive. This annual campaign raised \$160,000 for camper scholarships in 2011!

The weather is warming up. The days are getting longer. The trees are beginning to bloom. Spring is here, and summer is just around the corner. That means camp is, too! I hope that you all are looking forward to another SLC summer and maybe... just maybe... this will be the year that I see you in camp!

Joe Goldberg, SLCAA, President, [goldnglich@aol.com](mailto:goldnglich@aol.com)



# From Our Alumni...



In every issue of the Re-Echoes, the following names are listed as deceased in the Past Presidents section: Henry A. Cohen, Irving Gilbert, and Sam Peyer. If any current Alumni member might know if Herbert A. Fishman or Phillip Levinowitz is alive or deceased, please contact Celia with that information. Thank you for your assistance in this matter.

-Alvin Elkins

\*\*\*\*\*

Dear SLC,

I was just speaking with Phyllis K. (SLC Alum) who teaches with me in Pearl River. We were both going on and on about how the Saturday Gala was a perfect party. We both had a fabulous time and really felt the party organization was the perfect combination of everything. We were saying that we both left the party feeling so positive about being connected to such a great organization like SLC. I really would like to thank Evie and the rest of the committee for their hard work, it really paid off.

Again, I really had a good time and please thank everyone involved.

Bonnie Caul

\*\*\*\*\*

Dear SLC,

I'll be 80 years old in December of this year and I still have my memories of 1943 (Cornell-East), 1944 (Iowa-Midwest), and 1946 (Oregon-Far West). Those two weeks spent in the countryside (Cold Spring, NY) have always been with me. The counselors—those first two years—WWII years—were anxiously awaiting call-ups to the military, but they gave their all to make sure we had a good time. Did any of them come back after the war to visit SLC?

I can remember the cheer,

"We welcome you to SLC

We're mighty glad you're here

We'll sing you in and we'll sing you out

For you we'll raise a mighty shout

Hail, hail the gang's all here"

My mother enrolled me in the Fulton Street Y in the Bronx so I was eligible to go to Surprise Lake Camp and I talked some of my friends on Pelham Parkway into doing the same. I met a whole group of boys from the Education Alliance on East Broadway and we got friendly swapping phone numbers. I was to meet some of them again downtown in the city when we went to Baruch College in the 50s.

I got poison ivy and the camp doctor (he was called "Doc") treated the rash with calamine lotion and I was told by him not to go into the woods again. The camp director was Henny Cohen—basketball coach at Seward Park High School, and I met him on the courts there when we had a scrimmage during the Christmas vacation when I played for Columbus HS.

Years later I met him and his wife on W. 73rd St. and West End Avenue by the Schwab house where my aunt lived and he said he did remember me (6'5"-blonde hair), but he might have just been polite. There were two movies that were always shown in the gym—Victor McLaughlin's "The Informer," and a documentary on the flooding of the Mississippi (30s). Three summers, three showings of the same two films.

Last memory—mutual broadcasting radio baseball game during the week. When the Cubs were out of town Tuesday's game was broadcast from Macon, Georgia. Southern stories always had a radio in the background talking about the event in the class A South Atlantic League. On Wednesdays the Giants had an afternoon game from the Polo Grounds for mutual broadcasting to air. Iggy Mcvea, director, used to bring me Tuesdays' Macon sports page so I could read the box scores and talk about the minor league players.

I was a big follower of the minor league teams in those years (1956-59). I was asked by a Giants official what was the name of the Macon club and I said it's the Macon Whoopies owned by Eddie Cantor. Iggy cracked up. Really it was the Macon Peaches, but I was thinking about SLC and Eddie Cantor's contribution to the happy days of summer for those boys able to get there.

Sincerely yours,  
Bernie Levy, 265 Brighton G, Boca Raton FL 33434



Group of Boys at Surprise Lake Camp, 1946

## ***Surprise Lake Camp's Capital Campaign: Securing Our Future***



The cornerstone of Surprise Lake Camp's mission since it was founded in 1902 has been to provide a camp experience for children regardless of their ability to pay. Roughly half the campers receive scholarships according to a fee scale that is based on

family size and income. The total dollar amount provided by the camp is \$900,000 a year. Unfortunately only \$500,000 a year is generated to pay for these scholarships, and the rest has to be sucked out of the operating budget, which creates constant financial pressure. Camp's Board of Directors adopted a Strategic Plan in 2009 that calls for an increase in the camp's Scholarship Endowment of \$7 million in order to eliminate the scholarship gap and put the camp on sound financial footing for the future. The \$7 million is being raised through a combination of legacy gifts and current gifts. The legacy campaign has already met and exceeded its goal, with 160 participants and growing. The cash campaign has a goal of \$3 million. Board solicitation is complete and key alumni and friends of the camp are now being solicited. A total of \$1.75 million has been raised so far. The camp announced the public phase of the campaign at its 110<sup>th</sup> Anniversary event on March 10 and hopes to close the campaign by the end of 2012.



The money will all be used for the Scholarship Endowment, with the principal invested and income used according to the recently adopted New York Prudent Management of Institutional Funds Act guidelines. The camp has a balanced portfolio overseen by a Finance Committee with the guidance of a consultant.

Surprise Lake Camp has been enriching the lives of deserving young people for 110 years. Its leadership is determined to position the agency to be able to continue this work for a long, proud future. It is grateful to the many friends and supporters who share this vision and who believe that children should be given a chance to enjoy the benefits of camping even if they cannot afford it.



If you are interested in participating in this campaign, please contact Jordan or Celia at 212-924-3131 or email [jordan@surpriselake.org](mailto:jordan@surpriselake.org) or [celia@surpriselake.org](mailto:celia@surpriselake.org)

# **Current Members of *The 1902 Society***

**We are extremely grateful to the following individuals who have made provisions for Surprise Lake Camp in their estate planning.**

Anonymous (2)	Irving Harris	Stephen Nitkin
Marcia & Bob Altabet	Joy Henshel	Joey Novick
Faith Altschuler	Patti Henshel	Shelli & Larry Olinsky
Walter Arnstein	Andrew Hess	Stacey & Rob Panepinto
Margery Arsham	Barbara & Stanley Hirsch	Eve Rubinstein Papernick & Jon Papernick
Celia Baczkowski	Roberta & Peter Hirsch	Jerry Person
Sylvaine Baczkowski	Thelma & Sanford Hochberg	Nicole Pilevsky & Joseph Osheroff
Marilyn Bailis & Jerry Mark	Gayle Hoffman	Johanna Pinzler & Avri Klemer
Janeen Bellafiore	Jason A. Hoffman	Julia Pisetsky
Jennifer Herman Benalt & Adam Benalt	Nancy & Alan Hoffman	Sheila & Ken Pollet
Molly Benton	Rachel Israel	Lee Posniack
Evie & Jon Berger	Seymour Israel	Marc Rentzer
Blanche & Edward Berk	Amy & Bruce Jaffe	Michael Rieger
Howie Berk	Chuck Jainchill	F. Peter Rose
Jeff Berk	Susie Jainchill & Tsahi Gelardin	Robert Rosenbaum
Michael Berk	Stan Josephson	Mara Rubinstein
Andie Biederman	Linda Kane	Robin & Larry Rubinstein
Jake Biederman	Heidi & Bruce Katz	Judy Freiser Sails & Steven Sails
Martin Blum	Karri & Joel "Whammy" Kaufman	Alan Salt
Nelson Braff	Sheryl Kirschenbaum	Carolyn & Dave Samuels
Amy Bram	Alan Kleiman	Joshua Sarkozi
Elyse Braun	Ele Klein	Nigel Savage
Mitchell Brenner	Andrew Kominik	Robert Schechter
Ezra Cahn	Marc Krigsman	Dan Schulman
Justin K. Cantor	Karen & Stewart Lantner	Gayle Schwartz
Meridee Simon Cole	Maureen & Howard Lantner	Maria & Ken Seligson
Larry Cooperstein	Moran & Murray Lantner	Eliot Senor
Anita Cruso	Beth & Dave Levene	Laurie Feldman-Shepherd
Jane Hershey Cuzzo	Dena & Elly Levine	Jenna Sidor
Elena & David Dale	Mark Levine	Harvey Sills
Jordan Dale	Fred Levy	Rebecca Solomon
Wendy & James Dinn	Randi & Scott Lieberman	Steve Sommer
Michele Mars DiRuggiero	Laura & Carter Mansbach	Susan Namm Spencer
Laurie Dobkin-Helm	Judy & Michael Margulies	Randi Sperber
Noam Dolgin	Ed Markowitz & Children	Jeff Spiegel
Matt Dorter	Linda Markowitz	Seth Stein
Michael Fandal	Caryl & Mike Melasky	Charles Stendig
Lori (Heitzner) & Seth Fishman	Paul Mermelstein	Adele & Henry Stern
David Fleischner	Miriam Messinger & Felicia Hayes	Denis Sternberg
Ralph Forgacs	Ruth Messinger	Elaine & Paul Suchow
Ken Freedman	Emilie & Andrew Meyer	Audrey & Mark Tenenhaus
Rose & Harris Ghersin	Estelle Meyer	Bret Tenenhaus
Scott Gilden	Jerry Meyer	Mike Tenenhaus
Jordan Golan	Jim Meyer	Alice & Steve Terner
Dr. Joseph Goldberg	Jodie Meyer & Steven Tuber	Lisa & Steve Weinberg
Michelle Goldstein	Lee Meyer	Diane & Allen Weiner
Linda & Ben Gordon	Jonathan Miller	Cheryl & David Wolff
Stephen Gordon	Susan Feldman-Miller	Anne & Joel Zbar
Pam & Jay Greenbaum	Barb & Steve Mink	Barbara & Michael Zbar
Suzy Greenberg	Jill (Simon) & John Miskanic	
Rhonda & Bob Greenblatt	Karen & Jim Morrison	
Matthew & Brenda Grosshandler	Suzanne Moskowitz	
Andrea & Arthur Gruber	Alyse Kunkin Murabito	
Gwen & Larry Hamberg	Roni & Jason Nadell	



# Why Become a Member of the 1902 Society?

We'll let our current members tell you!



Why did we join the 1902 society? I grew up in a time when our family did not have a lot of money at all. I wasn't sure then how my Mom figured out how to send me to camp, but as an adult I can much better appreciate the concept of "scholarships." My joy as a camper was only surpassed by the summers I worked at Surprise Lake in the kitchens - and while I got paid a stipend for employment, the reality is funding beyond camper fees is the only way SLC can bring a truly unique experience to campers, staff, parents and alumni. Cheryl and I are able to contribute marginal dollars today to help bring a few days of joy to a camper each year - but it is our true hope that we'll be able to have a much more significant impact, either through new

programs or allowing many campers to benefit as I did, and a planned gift is an amazing vehicle to make that a reality. It's easy to do, it will be meaningful when it comes to fruition, and simply it is the right thing to do.

-Cheryl & David Wolff

**View video testimonials at**

**<http://www.surpriselake.org/1902society/>**



Our reasons for joining the 1902 Society were reaffirmed at the 110<sup>th</sup> Anniversary Celebration. The camp we know is one that is committed to "growing" campers and staff in a caring and supportive Jewish environment. As a result, it is not surprising to hear many testimonials as to how camp has positively impacted lives. Our lives have been similarly impacted.

Camp helped to form the people we became. Making a difference in the lives of others has been a central focus of our work and lives within the community. Unquestionably that value was strongly influenced by camp. As a young staff member, I recall the camp

director Jerry Mark, giving me twenty dollars and asking me to take a child into town to buy him a pair of shoes. This very private and quiet act made a deep impression when it came to values and the need to help those who are less fortunate.

We met at camp. Thanks to Harry's assigning us to work together painting the docks, we started a relationship. The relationship has resulted in 35 years of marriage and a beautiful daughter (who attended camp and has formed lasting friendships)!

Camp invested in us. Each of us was only able to attend camp due to the generous scholarship program. While we make a donation each year to help others attend camp, it was always our intent to do more. The 1902 Society is a wonderful vehicle that will allow us to make a more meaningful contribution. Life is finite, while camp is ongoing. We want to do all we can to ensure camp not only exists, but prospers, and continues a legacy of service that is larger than each of us.

-Bruce and Heidi Katz



# Why Become a Member of the 1902 Society continued...

We joined the SLC 1902 Society because we love SLC.

Allen attended SLC as a camper then was an employee in the late 70's. In 2006, my daughter Julia had to do a book report about the book "Holes" in the form of a camp brochure. The brochure she created got her excited about the idea of camp and she wanted to go to a sleepaway camp. We chose SLC for both our daughters, Julia and Rachel. They had a great time and loved the experiences and friends they made. They skipped a year (2007) and then four of us went back in 2008—the girls for their 2nd summer, our son, Jeremy, for his first summer, and Diane as an employee!



Our summers are now filled with fun, as we enjoy the beautiful surroundings, get away from TV and video games, see our old friends, and make new friends. Now, both Rachel and Julia work at SLC, and Allen comes up every weekend to enjoy the paradise that the rest of us enjoy for the entire summer. We wanted to be part of the 1902 Society to ensure that others can enjoy what we love, and hopefully down the road maybe our grandchildren will enjoy the same experience!

-Diane & Allen Weiner

## Donating Appreciated Securities

by James E. Meyer (member SLC Board of Directors)

Gifting cash may be problematical for some individuals. However, many donors do not realize that you may gift shares of stocks, bonds, and mutual funds. By donating an appreciated stock, bond, or mutual fund which has been held for over one year, the donor lowers the true after-tax cost of the gift plus the donor pays no capital gains tax on the gain of the security.

### One Example:

Supposed you are in the 31% bracket and you paid \$200 more than a year ago for a stock that is now worth \$1,000. If you sell the stock, you will pay 15% capital gains tax on the profit of \$800, so you will end up with \$880. If you donate the stock, there is no capital gains tax and you will get a tax deduction on the full \$1,000 gift. This tax deduction in the 31% bracket will be \$310. Instead of getting \$880 for selling the stock, you get \$310 for donating it, making the true cost of the gift \$570. Therefore the gift of the appreciated security costs much less than a gift of cash.

Gifts of stocks, bonds and mutual funds are a great way to help camp. Because most securities are held in brokerage accounts, transferring the security to SLC is easily accomplished by electronic transfer. For more information on the transfer procedure, please call the camp office and ask for Celia.

In a similar vein, you may also want to consider gifting the following through your estate by Will or Bequest. These items are considered tax cursed because of taxation of the gift during life: U.S. Savings Bonds, IRAs (there are some exceptions), Accounts Receivable, Renewal Commissions, and Unpaid Installments.







# 1902 Society



*"Just as my parents planted for me,  
so I plant for my children."*

## Letter of Intent

We hope you will tell us when you have included Surprise Lake Camp in your estate plans. We would very much like the opportunity to say "thank you" for your generosity. Letting us know of your intentions also helps us to be better aware of your particular interests and will allow us to keep you informed of developments at SLC which may be relevant to your planned gift. Recognition of your gift may also inspire generosity in others.

In support of the work of Surprise Lake Camp, I/we want to provide for future generations and to ensure the continuity of the services it provides.

This Letter of Intent represents my/our commitment to Surprise Lake Camp. It does not represent a legal obligation on my/our part and may be changed at any time.

☐ I/We have already joined the 1902 Society by: (Please check the method(s) you have used)

- ☐ Making a bequest in my/our Will or Trust
- ☐ Investing in a Charitable Gift Annuity (CGA) with Surprise Lake Camp
- ☐ Naming Surprise Lake Camp as Beneficiary of a Charitable Remainder or Lead Trust
- ☐ Naming Surprise Lake Camp as a Beneficiary of a Life Insurance Policy
- ☐ Naming Surprise Lake Camp as Beneficiary under a Retirement Plan
- ☐ Directing my/our Foundation to make annual gifts beyond my/our lifetime(s)

☐ The amount of my/our planned gift is: \$\_\_\_\_\_ or \_\_\_\_\_% of my/our estate.

\*\*\*\*\*

☐ I/We intend to include Surprise Lake Camp in my/our estate plans by the following date: \_\_\_\_\_

☐ I/We wish to be (a) member(s) of the 1902 Society but wish to remain anonymous  
Name (s) as you would like it (them) to appear (for Anonymous, please check the box above):  
\_\_\_\_\_

Address: \_\_\_\_\_

City: \_\_\_\_\_ State: \_\_\_\_\_ Zip: \_\_\_\_\_

Phone: (        ) \_\_\_\_\_ Email address: \_\_\_\_\_

Signature: \_\_\_\_\_ Date: \_\_\_\_\_

## **DEDICATED TO OUR 2011 SUPPORTERS**

The following pages are dedicated to the many friends who have supported Surprise Lake Camp in one way or another during 2011. Camp is blessed to have so many special people who care about its mission. We hope we didn't forget anyone. If your name is not listed here and you would like to be acknowledged in a future issue, please tell us. Please know that camp is very grateful for all the support we receive, and we hope that one day we will have a chance to thank everyone . . . in person, in print, or both!

### **What's the Difference Between An Annual Campaign and a Capital Campaign?**

Capital campaigns are conducted periodically to provide significant funds for major expenses such as the renovation of the kitchen, lodge renovations, new washhouses, scholarship endowments, etc.

Annual campaigns, such as the Alumni Drive and Board Campaign, are designed to provide scholarships for current year campers.

**The Annual Campaign helps us live. Capital Campaigns help us grow.**

## **2011 Endowment & Capital Campaign Gifts**

### **Bar/Bat Mitzvah Fund**

David Ackerman  
Camp Androscoggin  
Roberta & Peter Hirsch  
Sheryl Kirschenbaum  
Karen Malamud  
Eve Rubinstein Papernick

### **Billie Schwartz Scholarship Fund (formerly the 100th Anniversary Fund)**

Chuck Jainchill  
Deborah Raizes

### **Building Fund**

Celia Baczkowski  
Mitchell Brenner  
Vicki & Michael Herson  
Harold Grinspoon Institute

### **Flick Fleischner/Boys of Camp Mooween Schol. Fund**

Jordan Dale  
Dick Davis  
Elaine & Mel Finkelstein  
David Fleischner  
Roger Sachs  
Mark Segal  
Cindy Shmerler  
Joe Stein  
Roslyn & Carl Sydney

### **General Endowment Fund**

Robert Altabet  
Marilyn Bailis & Jerry Mark  
Jason Bailis  
Rachel Bailis  
Shoshana & Steve Bederman  
Evelyn & Nick Beilenson  
Evie & Jonathan Berger

### **The following individuals made gifts to one of several funds in our endowment, or made payments on a capital campaign pledge.**

Howie Berk  
Amy Goldberg  
Roberta & Peter Hirsch  
Gayle Hoffman  
Amy & Bruce Jaffe  
Chuck Jainchill  
Linda Kane  
Melissa & David Levine  
Michele Mark Levine  
Arline Lubin  
Judith & Michael Margulies  
Lisa Mark  
Linda Markowitz  
Miriam Messinger  
Ruth Messinger  
Jerry Meyer  
Alice & Alan Model  
Ronit Moritz  
Susan & Sheldon Osinoff  
Mark Segal  
Edwin Shmerler  
Evelyn Solby  
Susan Spencer  
Seth Stein  
Anne & Joel Zbar  
Barbara & Mike Zbar

### **Harry Henshel/Raise Your Match Campaign**

Estelle & Herbert Adler  
CCUSA  
Harold Grinspoon Institute  
Dayle Henshel  
Joy Henshel  
Patti Henshel  
Roberta & Peter Hirsch  
Nancy & Alan Hoffman  
Linda Markowitz  
Ruth Messinger

Miriam Messinger  
Suzanne Moskowitz & Jordan Dale  
Stephen Nitkin  
Jeff Spiegel  
Mandy Storfer  
Judy & Charles Weinberg

### **Harry Vogel Aquatic Fund**

Ron Kalb  
Johanna Pinzler & Avri Klemer  
Bobbi & Harry Vogel  
Missy Vogel

### **Henny Cohen/Alumni Association Schol. Fund**

SLC Alumni Association  
Michael Berk  
Abe Greenberg  
Sy Lasher  
Nicole Pilevsky  
Sheila Riddle  
Nathan Salant

### **Herson Family Fund**

Donna Ackerman  
Hope Adler  
Edward Celiano & Family  
Jordan Dale  
Eric Dell  
Katherine DiGiovanni  
Annette & Herb Feldman  
Debra Foulks  
Joy Henshel  
Arlene & Milton Herson  
Vicki & Michael Herson  
Richard Kearns & Family  
Brian Keech/Drexel University

Linda Kauskay & Bruce Malashevich  
Ira Lomench  
Deirdre & David Kells  
Ziva & Isaac Levy  
Judy & Michael Margulies  
Amy & Bruce Mehlman  
Greta Menard  
Mr. & Mrs. Metz  
Michael Reardon  
Jo Ann & John Riganati  
Donna Mullins  
Nora & John Parell  
Paul Richman  
Cindy & Martin Ruback  
Sandra & Marvin Rubin  
Barbara Ruff  
Carol Ruttner  
Saab North America  
Sandra & Sheldon Salzberg  
Michelle Shanley & Fred Sico  
Lisa Stern  
Jacqueline & Jerry Stolzenberg  
Tara & David Urban  
Michele Weiner & Joel Meisner  
Mr. & Mrs. Alfred Zucaro

### **Jean Leiter Scholarship Fund**

Stephen Gordon

### **Jeff Herman Fund**

Michael Berk  
Helena Prigal  
Robert Schechter

### **Lenore Hershey Schol. Fund for Girls**

Jane & Steven Cuzzo

### **Holman Family Fund**

Bertram Holman

### **Rita Josephson Scholarship Fund**

Stan Josephson

### **Rhoda Kaplan Arts & Crafts Fund**

Randi Honig  
Sandra & Len Honig  
Lee Kaplan  
Andrew Miller  
Robert Miller  
Marci & Mark Semel  
Ro Shanley  
Richard Turyn

### **Seth Fishman Hockey Fund**

Jeremy Abrams

### **Tribute Fund**

Ronnie & Bob Greenblatt  
Michele Jacobson  
Space & Gene Kelly  
Richard Klein  
Peter Reden, MD  
Jodie & Andrew Rossi  
Andrew Rubinson  
Mark Segal  
Ruth & Andrew Suzman

### **Winter Camp Schol. Fund**

Molly Benton  
Mike Bishansky  
Bernard Hulkower  
Sanford Oppenheimer  
Jerry Oppenheimer  
Moe Sherman

# *And more "thank you's" to:*

- ☆ Stan Josephson for helping to sponsor the tuition of four Ethiopian Israelis.
- ☆ Susan Spencer for sponsoring a camper from Poland.
- ☆ Harris Gherin for the windows he replaced around camp.
- ☆ Michele Albo for donating special SLC-imprinted clipboards for our supervisors.
- ☆ Alan Hoffman for soliciting close to \$15,000 in donations from his friends and clients to benefit the annual campaign.
- ☆ AM Skier for being the corporate sponsor of the SLC Super-Bowl.
- ☆ The 2011 SLC Super-Bowl Participants, Volunteers, and Supporters (see page 15).
- ☆ Faith Altschuler and Liz Izower for co-chairing the SLC Super-Bowl.
- ☆ Jane Hershey Cuzzo & Steve Cuzzo for obtaining so many terrific gift certificates for our the SLC Super-Bowl Auction and 110th Gala.
- ☆ The 2011 Hike-A-Thon Participants and Supporters, and co-chairs, Joe Goldberg & Barbara Zbar.
- ☆ Joe Goldberg for sponsoring the Hike-A-Thon Breakfast.
- ☆ The participants and supporters of our Rosh Hashanah program.
- ☆ Michael "Satch" Saunders for running a basketball clinic for our campers.
- ☆ The Pollet Family for purchasing t-shirts for the Girls Hockey Team.
- ☆ Ken Seligson and Jersey Lynne Farms for their donation of Poland Spring Water on Alumni Day, and picnic tables and Adirondack chairs throughout camp.
- ☆ Howie Berk for volunteering his time, summer after summer, overseeing the Arts & Crafts program and the SLC Museum.
- ☆ B&L Deli, Silver Spoon Restaurant, McGuire's on Main, and Tommy Wills for sponsoring the 2011 Staff Banquet Tent.
- ☆ The Alumni Association and its volunteers for organizing the clothing sales on Visiting Days and Alumni Day.
- ☆ All the wonderful volunteers who help out on Docks Weekends, Visiting Days, and Volunteer Days.
- ☆ The Suchow Family for partially sponsoring the 2011 Shabbat Program at camp.
- ☆ Jeff Berk for coordinating the spring Alumni Overnight at camp.
- ☆ The Greenblatt Family for donating \$5,000 worth of new sports equipment.
- ☆ David Weintraub for sponsoring the camp tuition for two foster children from JAFCO in Florida.
- ☆ Seth Stein, Brandon Sherman, Gayle Hoffman, Keith Miller, Craig Miller, Liz Izower, Tracie Herman Miller, Mark Levine, Melody Mosher, Brian Doyle and Corey Zbar for volunteering as staff for the *Get Your Feet Wet*<sup>sm</sup> program.

## **IN-KIND GIFTS**

Surprise Lake Camp has received in-kind gifts from the following people in 2011: Ronnie & Bob Greenblatt, Suzanne Moskowitz & Jordan Dale, Claire Ginsburg, Vic Horowitz, Butch Goldsmith, Mark Levine, Gary Lilien, Phyllis & David Berk, Maxine & Dean Mayreis, Anne & Joel Zbar, David Weintraub, David Ackerman, Esther & Gabriel Altman, Stacey Panepinto, Brandon Grumet, Robyn Lefcourt, Lisa Bloom, Rachel Baron, Claudia Kessler, Steve Lawrence, Michele Kule-Korgood & Michael Korgood, Robin Krompner, Sue & Marvin Dubin, Donald Goldblatt, Gary Spielvogel.

## **HONOR GIFTS**

Surprise Lake Camp received gifts in honor of the following people in 2011: Sebastian Robec, Ally Kapchan, Amalia Singer, Hannah Reinhardt, Ashley Cohen, Rebecca Safeer, Ilyssa Kravit, Elysia Hope, Tamir Ashkenazi, Jenna Sidor, Tess Hamberg, Candice Gorman, Michael Margulies, Mike Tenenhaus, Denzil Jacobs, Jennifer & Matt Berk, Milton Bordwin, William Jack Simon, Martin Rubenstein, Jill Goodkin, Michele Di Ruggiero, Jared Tyler, Erica Karron, Kevin Mitchel, Ori Carlin, Tyler Shatesky, Jesse Pilnik, Jonas Kerner, Rob Greenspan, Sam Rachmuth, Ben Malamud, Robin & Larry Rubinstein, Health Center Staff Summer 2011, Viktor Kondor, Rebekah Lipsky, Andrea Zalin, Landon Katz, Josh Marcus, Richard Daniels, Greg Star, Lucie Pragrova, Josh Sarkozi, Amy Schwartz, Jessica Haffner, Rob Rosenbaum, Dani Johnson, Ilana Atwater, Avri Klemer, Sylvie Erlich, Jess Frothingham, Ali Olinsky, Aviv Hadashi, Rachel Weiner, Allie Ball, Jamie Marcus, Gali Moritz, Matan Zuckerman, Jessy Weinberg, Brittany Sternberg, Chelsea Lefland, Jack Benaim, Allan Berkun, Elliot Gemunder, David Fleischer, Michael Bush, Sarah Spitzer Gargano, Jamie Segal, Paul Stephan & Edd Clark, Stan Josephson, Sammy Sussman.

## **MEMORIAL GIFTS**

Surprise Lake Camp received gifts in memory of the following people in 2011: Lee Hamberg, Ruth Fleischer, Rose S. Budson, Thelma Salmonson Rodbell, Sarah Jane Fuchs, Henry Adler, Zygmunt Margules, Jacob Nisim, Lawrence Jay Goodman, Lilyan Klinger, Phyllis Rubin, Adam Horowitz, Philip Frydman, Milton Herson.

## **VENDOR GIFTS**

Surprise Lake Camp received support for our Scholarship Fund from Security & Safety Training.

## **THE SURPRISE LAKE CAMP BOARD OF DIRECTORS**

Surprise Lake Camp wishes to express its sincere gratitude and appreciation to the **Board of Directors** of the camp. These volunteers constantly work to ensure that camp remains the Best in Jewish Camping. In 2011, the Board contributed a total of \$277,230 in annual and capital gifts to SLC. We are proud that we have one of the best non-profit boards in the US!

**To view the 110th Anniversary Gala Commemorative Journal & the donors who generously supported the event, please visit our website at [www.surpriselake.org/110](http://www.surpriselake.org/110).**





# 2011 ANNUAL GIVING

## Breakneck Circle of Giving: One Whole Summer at Camp \$7,000 or more (up to \$30,000)

SLC Alumni Association  
Jay Jacobs  
The Norman M Morris Foundation  
\*Jerry Meyer

## Hudson Overlook Circle of Giving:

### One Session at Camp \$3,600 or more (up to \$7,000)

\*Moe Bordwin  
\*Neil Diamond  
Dayle, Joy & Patti Henshel  
Roberta & Peter Hirsch  
\*Stanley Josephson  
Lee Kaplan  
Judith & Michael Margulies

## Hinterlands Circle of Giving:

### Two Weeks at Camp \$1,800 or more (up to \$3,600)

\*Ronnie & Bob Greenblatt  
Vicki & Michael Herson  
\*Eleazer Klein  
\*Ruth Messinger  
Dana & Jonathan Miller  
\*Steven Moses  
\*Stephen Nitkin  
Judy & Charles Weinberg

## Bald Spot Circle of Giving:

### One Week at Camp \$900 or more (up to \$1,800)

\*Jeremy Abrams  
\*Robert Altabet  
Arthur Anton  
\*Suzanne Moskowitz & Jordan Dale  
Jill Dosik  
David Fleischner  
\*Gregory Fox  
Norm Friedman  
\*Joe Goldberg  
Amy Goldberg  
Donald Goldblatt  
\*Linda & Ben Gordon  
\*Brenda & Matthew Grosshandler  
Bruce Haber  
\*Nancy & Alan Hoffman  
\*Amy & Bruce Jaffe  
\*Chuck Jainchill  
Linda Kane  
\*Andrew Kominik  
\*Mark Levine  
\*Nance & Martin Liebgott  
\*Andrew Lobb  
\*Linda Markowitz  
\*Shuying Wang & Paul Mermelstein  
\*Roni & Jason Nadell  
Ira Pianko  
Carl Reisner  
Rabbi Gloria & Martin Rubin in memory of  
Sophie Rubin & David Rubin  
\*Robin & Laurence Rubinstein  
\*Bernard Saidel  
Mark Segal

## One Week at Camp

### Continued . . .

\*Carol & Larry Seigel  
Eileen & Eliot Senor  
Susan Spencer  
\*Bret Tenenhaus  
\*Michael Tenenhaus  
\*Susan & Matthew Tratner  
United Way Contributions  
Michael Witman  
\*Lior Yahalomi  
\*Barbara & Mike Zbar

### Five Days at Camp \$650 or more (up to \$900)

Anonymous  
\*Faith Altschuler  
Margery Arsham  
\*Celia Baczkowski  
in honor of Barbara & Mike Zbar  
\*Howie Berk  
Mitchell Brenner  
Randi & Barry Goldberg  
\*Matt Grubler  
Barbara & Stanley Hirsch  
\*Kathy & Mel Kalichman  
\*Heidi & Bruce Katz  
\*Carol "Space" Lee & Gene Kelly  
Sheryl Kirschenbaum  
\*Laura & Carter Mansbach  
Robin & Danny Muskin  
in memory of Leon Muskin  
\*Stacey & Rob Panepinto  
\*Jerry Person  
\*Jessica Pollner  
Bruce Rubinger  
\*Robert Schecter  
Steve Sommer  
\*Audrey & Mark Tenenhaus  
in memory of Stephen O'Connor

### Four Days at Camp \$520 or more (up to \$650)

\*Jeff Berk  
David Berkowitz  
Scott Ehrlich  
Ira Goldfarb  
Greg Kaufman  
\*Blair Klaff  
\*Marta & Lee Meyer  
\*Marc Rentzer  
\*Aimee & Seth Stein  
\*Lisa Stulberger  
\*Anne & Joel Zbar

### Three Days at Camp \$390 or more (up to \$520)

Peter Baum  
\*Evie & Jonathan Berger  
\*Jennifer & Matthew Berk  
Thomas Berner  
Camps Baco & Che-Na-Wah  
Carolyn & John Canova  
Ellyn Cohen

## Three Days at Camp

### Continued . . .

Marjorie & Robert Feder  
\*Lori & Seth Fishman  
Elliot Gemunder  
\*Scott Gilden  
\*Darlene Haut  
Lori & Andrew Hess  
\*Gayle Hoffman  
\*Rachel Israel  
in memory of Barbara Israel  
Alan Kleiman  
in memory of Phyllis Greenberg  
Ruth Kravit & Bernie Karron  
Michele Mark Levine  
Cecile & Stuart Levy  
\*Sharon Manewitz  
Roberta & James Meyer  
Marylyn Muskin  
in memory of Leon Muskin  
\*Nicole Pilevsky  
Queens Village Jewish Center  
\*Stuart Rachlin  
\*Rabbi Peter Rubinstein  
Sarah McGregor  
Adam Stein  
\*Alice & Steven Terner  
\*Diane & Allen Weiner  
Rafi Yahalom

### Two Days at Camp \$260 or more (up to \$390)

Morris Adwar  
Yan Baczkowski  
\*Marilyn Bailis & Jerry Mark  
Steven Bleiberg  
William Buchbaum  
\*Melanie Fleischmann in memory of  
Robert & Linda Fleischmann  
\*Laurie & Alan Fried  
Warren Heaps  
Thelma & Sanford Hochberg  
\*Whammy Kaufman  
\*Johanna Pinzler & Avri Klemer  
\*Phyllis & Warren Kossin  
\*Maria & David Leibowitz  
Carrie & Steven Miller  
\*Sheila & Ken Pollet  
\*Abraham Rubin  
\*Sherry & Steven Rubin  
Talia Schneider  
Henry Schoenfeld  
Julia & Mike Seltzer  
\*Jeff Spiegel  
\*Robert Steinhardt

The gifts listed below were made between

This listing includes alumni who made gifts to our a  
Board Members who made or solicited gifts to th

We are very grateful to every

\*Indicates Lifetime Member c

## Two Days at Camp

### Continued . . .

\*Joshua Stern  
Adele & Henry Stern  
\*Jamie Umans  
\*Marlene & Barry Vegter  
\*Jordana Zbar

### One Day at Camp \$130 or more (up to \$260)

Anonymous  
\*Lisa Albukerk  
\*Susan Alintoff  
\*Steven Allen  
Sylvaine Baczkowski  
Helaine Banner  
\*Andrew Bata  
in memory of Elizabeth Bata  
Amy Beaumont  
Whitney & Jonathan Belkowitz  
Pearl & Harry Belkowitz  
in memory of Philip Frydman  
\*Michael Berk  
\*Mindy & Jeff Berkon  
Michele Bermel  
Jake Biederman  
Martin Blum  
\*Elyse Braun  
Nedra & Michael Bush  
\*Michael Cohen  
\*Donna Cohen Ross  
\*Meridee Cole  
\*Larry & Irene Cooperstein  
Anita Cruso  
Joseph Ezratty  
Karen & Donald Fagelman  
Fasst Products  
\*Mark Gilbert  
\*Danielle Gilde  
Jill Gold  
in honor of Emily & Sarah Gold  
\*Jennifer Goldstein  
\*Karen Raksis & Robert Grader  
Abe Greenberg  
\*Shira & Evan Greenblatt  
\*Lloyd Greene  
\*Amy Gross  
\*Andrea & Arthur Gruber  
Leslie & Sam Guttman  
\*Gwen & Larry Hamberg  
Allison & Michael Heitzner  
\*Margot Hodes  
Sarah Jacobs  
Meghan & Diarmuid Joye  
Jeanne Kaiser  
in honor of the Berk Family

# G SUPPORTERS . . .

February 1, 2010 and January 31, 2011.  
Annual Alumni Drive (totaling \$161,000) as well as  
the annual Board Campaign (totaling \$78,000).  
Everyone for their generosity.  
of the Alumni Association

## One Day at Camp Continued . . .

Jeanne Kaiser  
in honor of the Berk Family  
Roger Karlebach  
Stuart Karten  
Gary Kauffman  
Doris Kaufman  
Carrie & Dave Kerpen  
Phyllis & Steven Kinzelberg  
Andrew Kovar  
Victor Krauthamer  
\*Robin & Gordon Krompner  
\*Sy Lasher  
\*Barry Leitman  
\*Beth & David Levene  
Rochelle & Steve Levenson  
Erica Levin  
Dena & Elly Levine  
\*Nancy & Edward Levy  
\*Randi & Scott Lieberman  
\*Ellen Manobla  
Lisa Mark  
\*Becky Melzer  
Karen & Jim Morrison  
\*Shelli & Larry Olinsky  
Sarah Permut  
\*Ira Polinsky  
Lee Posniack  
Helena Prigal  
Lawrence Rabinowitz  
Sheila Riddle  
in memory of Karen Sue Taylor  
Marni Robin  
\*Jeff Rosen  
\*Eve Rubinstein Papernick  
Jonah Sachar  
\*Judy & Steven Sails  
Deborah & Michael Samori  
Rob Scheinfeld  
in honor of Jordan Dale  
Stanley Schiffman  
\*Jean & Phil Schneider  
Sam Silverman  
Nili Simhai  
\*Tess & Gary Spielvogel  
\*Jerry Statman  
\*Francine & Robert Stein  
Marcy Stuzin  
LN Tanenbaum  
Anya Veksler  
in memory of Bernard Cooper  
Lisa & Steve Weinberg  
Howard Weissberger  
\*Sean Zam

## Gifts Under \$130

Anonymous  
\*Jaime Anemone  
Wendy Babyatsky  
Jaime Baczkowski  
Sharon Ball  
\*Susan Barrett  
Max Baustin  
Amy Bechar  
\*Jennifer & Adam Benalt  
\*Karen & Adam Bendeson  
\*Adam Benmoise  
Blanche & Edward Berk  
\*Shep Berkon\*  
Dawne Birdsall  
Irene Blady  
Jake Bleiberg  
\*Samantha Blendis  
Victor Bloodgood  
Sue Bookchin  
Sherri & Nils Bordoff  
\*Jocelyn Borgner  
\*Larysa & Nelson Botwinick  
Steve Boyarsky  
\*Danielle Braunstein  
Sarah Brettschneider  
\*William Briggs  
Cliff Broder  
Eben Brown  
David Brown  
Alan Buhler  
Lawrence Ceasar  
\*Andi & Marc Cohen  
Seth Cotler  
Wendy Gutterson & David  
Crandell  
\*Donald Davis  
Alex Dekhterman  
in honor of Sheryl Kirschenbaum  
& Jordan Dale  
Boris Dikovsky  
Daniel Dikovsky  
\*Wendy & James Dinn  
\*Michele DiRuggiero  
Vivian & Brian Elba  
\*Ian Elimeliah  
Judith Elkin  
\*Alvin Elkins  
Jessica Ewing  
\*Michael Fandal  
Howard Feldman  
\*Rise Fine  
Arnold Finkelstein  
Ronnie & Ronald Fisher  
\*Howard Fishman

Erika Forgacs  
Elana Friedman  
Michael Friend  
Marc Frydman  
in memory of Mitch Pumper  
Marissa Garfinkel  
Susie Jainchill & Tsahi  
Gelardin  
\*Joe Goldberg  
\*Tobi Goldberg  
\*Michelle Goldstein  
\*Randi Goodman  
Good Search  
Melissa Gordon  
Gary Gordon  
Jeff Graber  
Amy & Arnold Graber  
Gail Gremse - Rose & David  
Rose  
Lenny Grinberg  
Jerry Gross  
\*Michael Gutenplan  
\*Shana & Scott Gutterman  
Margery & Art Haber  
\*Lauren Haber  
\*Jason Hoffman  
\*Lauren Hoffman  
Howard Horder  
\*Nancy Horn  
in memory of Ben Glassman  
Elena Ippolito  
Harriet & Jack Izower  
\*Elizabeth Izower  
Jeffrey Jackel  
Keith Jacobs  
\*Michele Jacobson  
in honor of Nancy Sidor  
Maris Jaffe  
Joan Jetter  
Dani Johnson  
Otto Juelich  
Ally Kapchan  
Emily Kaplan  
Jessica Karp  
Erica Karron  
Rachel Karyo  
Jack Kaye  
\*Wayne Kellner  
Elina Kerzhner  
Brad Kessler  
Arnold Kinsler  
Donna & Garry Klein  
\*Barbra Klein  
Cheryl Klein  
Doron Klemer  
Madeleine & Edward Koransky  
Debra Bergen Koster  
\*Elihu Kover  
\*Tatyana Kristalova  
\*Ellen & Jeff Lambert  
\*Daniel Langer  
Sandra Lansky  
\*Moran & Murray Lantner  
Iris Lapolla

## Gifts under \$130 Continued . . .

Samantha Lawsky  
Paul Lefkowitz  
Cheryl & Steven Lefland  
Melissa & David Levine  
Tracy & Frederick Levine  
\*Mark Levine  
Maishe Levitan  
Anson Li  
\*Josh Lilien  
Alan Lipman  
Robin Maccabee  
Doug Manne  
Bonni Marcus  
Debra & Barry Margolin  
in memory of Sol Ellinson  
Lorrie Markman  
Chris McGrath  
Caryl & Mike Melasky  
Linda Meltzer  
Miriam Messinger  
Gayle Mestel  
in memory of  
Joel & Elaine Mestel  
\*Emilie & Andy Meyer  
Charles Michaelson  
\*Keith Miller  
Marion & David Millet  
Michael Mokotoff  
Leonard Morgenstern  
Janet & Irwin Moskowitz  
Alyse Murabito  
Robin & Danny Muskin  
Ina Muskin Massa  
Billy Newman  
\*Malcolm Newman  
Richard Nord  
in memory of  
Steve Bruce Kalichman  
Joey Novick  
Sarah Onstott  
Rachel & Steven Pasichow  
Andrew Paskal  
George Penchina  
Francine & David Penner  
Bob Perlmuter  
\*Julia Pisetsky  
Barry Polinsky  
Kate Purdue  
AJ Retig  
Shari Riechelson  
\*Michael Rieger  
Steve Rosenbaum  
\*Robert Rosenberger  
Robert Rosenthal  
Steven Rosenthal  
\*Mara Rubinstein  
Molly Safar  
\*Bryan Salz  
Carolyn & Dave Samuels  
Josh Sarkozi  
Martin Schnabel - MTA  
Ken Schneider  
\*Meri & Paul Schoenblum  
Dan Schulman

Sealed With a Kiss  
Harriet Sepinwall  
Susan Shakin-Gittelman  
Isaac Shapiro  
Laurie Shepherd  
Shomrim Society  
\*Nancy & Lee Sidor  
in honor of Ken Seligson  
Arlene Siegel  
Gary Silverman  
Jeremy Smuckler  
Jean Solomon  
Randi Sperber  
Leonard Spiegel  
Elana Erlich Stein  
Joan Sternberg  
Elaine & Paul Suchow  
Jennifer Sussell  
\*Ilana & Michael Sussman  
Ilene Sztorc  
David Tager  
Shauna Tannenbaum  
\*Rita & John Tarrash  
Jerome Tavel  
The Black Family  
\*Jennifer Toback  
in memory of  
David Marc Friedman  
Allison Tratner  
Margaro Triantafillos  
Victoria Trinagel  
in honor of Elliot Gemunder  
\*Tom Troche  
Max Tuchman  
\*Melanie & Seth Tucker  
Nadeen & Mark Tyler  
\*Alex Ullman  
\*Leon Unterman  
Missy Vogel  
\*Sandi & Les Waldman  
Harold Wasserman  
\*Wendy & Stuart Waxman  
Suzanne Weinick  
Jessica & Mitchel Weiss  
Kenny Weiss  
\*Jennifer Weitz  
Eric Weitz  
\*Abbe Wittenberg  
Fredri Wittenberg  
Scott Wynn  
in honor of Jordan Dale  
Dror Yanai  
Jessica Zalin  
Diane Zilz  
\*Arthur Zilz  
\*Debra Asher-Zitrin &  
Anthony Zitrin  
Jaime Zuckerberg  
Robert Zuckerman &  
Family



# 2012 Alumni Drive and Dues Form

## Did you know that . . .

- ☒ All gifts are fully tax deductible?
- ☒ All money raised directly benefits camper scholarships?
- ☒ You may be eligible to have your gift matched by your company?
- ☒ Surprise Lake Camp accepts contributions in memory or in honor of someone?
- ☒ You can make a gift of securities, donate a vehicle, or make a bequest in your will?
- ☒ You can support camp by having your credit card billed monthly?

## Make Your Gift Online!

<https://www.surpriselake.org/donate>

### PLEASE RETURN TO:

Surprise Lake Camp  
Alumni Association

#### Winter Address

Sept 1— June 15  
307 Seventh Avenue  
Suite 900  
New York, NY 10001  
212.924.3131

#### Summer Address

June 16— Aug 31  
Lake Surprise Rd  
Cold Spring, NY 10516  
845.265.3616

[alumni@surpriselake.org](mailto:alumni@surpriselake.org)

## Please help us to confirm our records by completing the following:

Name: \_\_\_\_\_ Maiden Name: \_\_\_\_\_

Address: \_\_\_\_\_ City: \_\_\_\_\_ State: \_\_\_\_\_ Zip: \_\_\_\_\_

Birthdate: \_\_\_\_\_ Occupation: \_\_\_\_\_ Dates/Years at Camp: \_\_\_\_\_

Email Address: \_\_\_\_\_ Phone: \_\_\_\_\_

**Alumni Drive:** Gifts to the Alumni Drive are used to support this year's scholarships. *This is camp's greatest current need.* If you are supporting this annual drive, please consider making an additional gift to our scholarship fund to secure our ability to provide for future scholarships.

**Scholarship Fund:** This money goes toward an endowment to provide for future scholarships. (Gifts will be credited to the Henny Cohen Scholarship Fund unless you direct that they be put into another scholarship fund.)

**Alumni Dues:** Membership entitles Alumni to be kept informed of alumni events, receive quarterly Re-Echoes, receive free admission to Alumni Day, a discount at the Alumni store, and a discount to all alumni events at which a fee is charged. All members will receive a membership card and calendar of events.

**Jeff B. Herman Memorial Fund:** Pays for camp's annual award given to the most outstanding male and female athletes on Teenside and helps to fund camper scholarships. Jeff Herman was a beloved Surprise Lake Camper who became a New York City policeman and was tragically killed in the line of duty.

## Please Complete:

1 Day at camp: \$135	4 Days at camp: \$540	The Hinterlands Circle (2 Weeks): \$1,850 or more
2 Days at camp: \$270	5 Days at camp: \$675	The Hudson Overlook Circle (1 Session): \$3,700 or more
3 Days at camp: \$400	The Bald Spot Circle (1 Week): \$925 or more	The Breakneck Circle (Full Summer): \$7,200 or more

Annual Alumni Fundraising Drive—"Send a Child to Camp" ..... \$ \_\_\_\_\_

Alumni Association Dues \$250 Lifetime, \$36 Annual ..... \$ \_\_\_\_\_

Scholarship Fund..... \$ \_\_\_\_\_

Jeff B. Herman Memorial Fund ..... \$ \_\_\_\_\_

Other Fund: ..... \$ \_\_\_\_\_

**Total Amount Enclosed** ..... \$ \_\_\_\_\_

☐ Please bill my credit card: (No AMEX, please)

Card Number: \_\_\_\_\_ Exp. Date: \_\_\_\_\_ Total Amount to Charge: \$ \_\_\_\_\_

Name on Card: \_\_\_\_\_ Billing Zip Code: \_\_\_\_\_ Signature: \_\_\_\_\_

☐ I'd like to make monthly contributions with my credit card. Preferred day of charge: \_\_\_\_\_ Month to begin: \_\_\_\_\_  
Monthly Amount: \$ \_\_\_\_\_ Total Number of Months: \_\_\_\_\_ Total Donation Amount: \$ \_\_\_\_\_

☐ I prefer to save paper & postage. Please email me my/our acknowledgment letter. (please include email address above)

☐ I request that my gift be listed as "anonymous."

☐ I would like to speak with an Alumni Fundraiser and/or member of Surprise Lake Camp's professional staff about a special gift. Surprise Lake Camp accepts contributions in memory or in honor of someone, gifts of stock, matching gifts, and planned gifts (deferred giving). Additionally, camp's long-term Capital Improvement Plan includes many opportunities for endowing scholarships, staff positions, or programs, as well as naming gifts for buildings or recreational facilities. We also welcome major gifts to fund donor-initiated projects.

**SURPRISE LAKE CAMP ALUMNI FUNDRAISING POLICY:** The Alumni Association is aware that some organizations raise money by bombarding donors with phone calls and mailings. We find this offensive. We ask our alumni for two things each year: annual dues and a gift to the Alumni Drive. From time to time, we also do special solicitations for capital projects. While we may send reminders to those who do not respond, we do not resolicit people during the same calendar year if dues have been paid and a gift has been made. In addition, we never give our address list to anyone, and we honor any request by an alumnus to block his/her name from our fundraising mailings.



# **SURPRISE LAKE CAMP**

## **SUPER-BOWL II**

### **NOVEMBER 5, 2011**

#### **FRAMES BOWLING LOUNGE NYC**

##### **EVENT SPONSOR**

**A.M. Skier Agency, Inc.**

##### **EVENT COMMITTEE**

Faith Altschuler  
Celia Baczkowski  
Joseph Goldberg

Gayle Hoffman  
Elizabeth Izower  
Chuck Jainchill

Robin Kromprier  
Seth Stein  
Jordana Zbar

##### **STRIKE SPONSORS**

Citrin Cooperman &  
Company, LLP

Glich  
The Goldberg Family

Title Guarantee, Inc.

##### **SPARE SPONSORS**

Acquis Consulting Group  
Pitta & Giblin, LLP

##### **PIN & LANE SPONSORS**

Abrams, Garfinkel, Margolis &  
Bergson, LLP  
Faith Altschuler  
Howie Berk  
Berkenstein  
Justin Cantor

Seth, Lori, Sabrina &  
Lexie Fishman  
Diane Hallenbeck  
"In Memory of  
Bill Hallenbeck"  
Stan Josephson

Charles A. Lennon, DMD, PC  
Andrew Paskal  
Rosenthal & Markowitz, LLP  
Schneider's Fishkill Bowl  
Law Firm of Seth Stein, P.C.  
Barbara & Mike Zbar

##### **FRIENDS**

1WAYJ Holdings, LLC  
Alicart Restaurant Group  
Donatella Arpaia  
Jeffrey Bank  
Bay Street Pediatric  
Associates, PC  
Adam Benalt  
Evie Berger  
Jeff Berk  
Matthew & Jennifer Berk  
Mitchell Bernstein, Herrick,  
Feinstein LLP  
Bistro Chat Noir  
Bohemia Auto Wash  
BR Guest Restaurants  
Nelson Braff  
Seth Bromberg  
Cellini Restaurant  
David Cohen  
Marc & Andi Cohen  
Jane Hershey Cuzzo &  
Steven Cuzzo  
Jordan Dale  
Dr. Jeffrey & Mrs. Pamela  
Deluca  
DKNY  
Dr. Juan & Mrs. Joann Edreira

Electrolysis & Esthetics  
by Susan Witrock  
Matthew Engelman  
Barbara Fastenberg  
Ralph Forgacs  
Fragrancenet.com  
Frames Bowling Lounge NYC  
Frozenberry Café  
Joe Goldberg, DDS &  
Stuart Lantner, DDS  
Rosalie & Sol Goldberg  
Tobi Goldberg  
Laurie & Bob Goldberg  
Alan & Nancy Hoffman  
Chuck Jainchill & Jill Rosenberg  
Joel "Whammy" Kaufman  
Lavo New York  
Randi Lieberman  
Leora Mallach, BB Batiks  
Lyon Restaurant  
Mangia's Restaurant  
The Melting Pot  
Andrew & Emilie Meyer  
Lee & Marta Meyer  
Nu Way Cleaners &  
Tailors of Westchester  
Erica Ockon

Outer Stuff  
Peerless Clothing  
Rattan, Inc.  
Riverview Restaurant  
Hudson Valley Thunder  
Motorcycle  
Talia Schneider  
Southern Hospitality  
Jeff Spiegel  
Steven & Audrey Sommer  
Seth Stein  
Suffolk Oral Surgery  
Associates, LLP  
T Bar Steak & Lounge  
Tamarind Restaurant  
Matthew & Susan Tratner  
Alex Ullman  
Dr. Filippo & Mrs. Alice Vita  
Melissa Vogel  
Winding Hills Golf Course  
Barbara & Mike Zbar

# Lifetime Members of the Alumni Association . . . 403 Members and Growing!

Jeremy Abrams	Elena & Dave Dale	Alyson Grosshandler	Maria & Dave Leibowitz	Jerry Person	Felice Solomon
Robert Abrams	Jordan Dale	Brenda & Matthew	Barry Leitman	Nicole Pilevsky	Lori Spechler
Sid Aconsky	Donald Davis	Grosshandler	Cheryl Lenowitz	Julia Pisetsky	Lois Speiser
Shira Adams	Jennifer Davis	Caren & Scott Grossman	Hubert Levander	Randi Plevy	Hedi & Ed Sperling
Michele Albo	Steven Deitch	Al Gruber	Beth & Dave Levene	Ira Polinsky	Jeff Spiegel
Susan Alintoff	Jill DiMeglio	Andrea & Arthur Gruber	Jack Levi	Sheila & Ken Pollet	Aliza Spiegel Aseoff
Steven Allen	Wendy Dinn	Matt Grubler	Mark Levine	Jessica Pollner	Tess & Gary Spielvogel
Robert Altabet	Michele DiRuggiero	Michael Gutenplan	Nancy & Edward Levy	Joanne & Adam Pomerantz	Jerry Statman
Faith Altschuler	Marilyn Dore	Shana & Scott Gutterman	Nancy Lieberman	Matt Pomerantz	Francine & Robert Stein
Jaime Anemone	Susan Drucker	Ron Haas	Randi & Scott Lieberman	Carol & Steve Prisant	Seth Stein
Debra Asher & Anthony Zitrin	Claudia Dweck	Lauren Haber	Nance & Martin Liebgott	Arthur Pushkin	Robert Steinhardt
Jason Bailis	Tiby & Arthur Eilen	Mindy Haber	Ted Liebowitz	Stuart Rachlin	Joshua Stern
Marilyn Bailis & Jerry Mark	Ian Elimeliah	Gwen & Larry Hamberg	Josh Lilien	Alan Rakofsky	Matthew Stern
Susan Barrett	Alvin Elkins	Daniel Harris	Stacie Lilien	Lee Reingold	Denis Sternberg
Tracie Basch	Regina Emdin	Robin Hartmann	Rochelle & Gary Lindner	Joanne Reinhardt	Gary Stevens
Andrew Bata	Robert Englander	Darlene Haut	Marcy Lippold	Marc Rentzer	Jerry Stiller
Lewis Bayers	Michael Fandal	Laurence Helpern	Andrew Lobb	Michael Rieger	Amy Stone
Jennifer & Adam Benalt	Rise Fine	Manuel Herman	Francine Lombardo	Daryl Robertucci	Mandy Storfer
Karen & Adam Bendeson	Alicia Fischweicher	Margot Hodes	Karen Londo	Suzette & Scott Roman	Lisa Stulberger
Lisa & James Benedick	Arlette & Adam Fishman	Peggy & Mike Hoffer	Sharon Manewitz	Jeff Rosen	Ilana & Michael Sussman
Adam Benmoise	Howard Fishman	Gayle Hoffman	Harold Manis	Marcy Rosenbaum	Liz Sussman
William Bennet	Lori & Seth Fishman	Jason Hoffman	Matthew Mann	Robert Rosenberger	Michael Kiwi Swan
Molly Benton	Melanie Fleischmann	Lauren Hoffman	David Manobla	Alan Rosenspan	Hody Tannenbaum
John Berenyi	Eddie Fluss	Nancy & Alan Hoffman	Ellen Manobla	Daniel Rosner	Rita & John Tarrash
Evie & Jonathan Berger	Ralph Forgacs	Nancy Horn	Laura & Carter Mansbach	Allen Rubenstein	Audrey & Mark Tenenhaus
Howie Berk	Gregory Fox	Rachel Israel	Ariel Marcus	Abby Rubin	Bret Tenenhaus
Jeff Berk	Jeremy Fox	Seymour Israel	Barbara Marcus	Abraham Rubin	Michael Tenenhaus
Jennifer & Matthew Berk	Robert French	Elizabeth Izower	Rosie Marcus	Sherry & Steven Rubin	Alice & Steven Terner
Michael Berk	Glen Frick	Michele Jacobson	Samantha Markov	Robin & Laurence Rubinstein	Jennifer Toback
Jeff Berkon	Laurie & Alan Fried	Bruce & Amy Jaffe	Edward Markowitz	Mara Rubinstein	Susan & Matthew Tratner
Shep Berkon	Eddy Friedfeld	Chuck Jainchill	Linda Markowitz	Rabbi Peter Rubinstein	Tom Troche
Cortney Bernstein	Lisa & Adam Friedman	Arthur Jakubowitz	Robert Mayer	Eve Rubinstein Papernick	Seth Tucker
Jodi & Evan Biale	Adele Friedman	Leslie Jassner	Kim McEvoy	Howard Rudin	Jeffrey Uhlfelder
Lois & Jack Bialek	Elana Rentzer Friedman	Erez Jontef	David Meltcher	Dawn Russo	Alex Ullman
Stephen Biespiel	Melissa Friedman	Stanley Josephson	Becky Melzer	Rebecca Safeer	Leon Unterman
Dawne Birdsall	David Friend	Dori & Bruce Kahn	Bruce Melzer	Bernard Saidel	Beth Useloff
Mike Bishansky	Cheryl & Ken Fuchsman	Ron Kalb	Shirley Melzer	Judy & Steven Sails	Jeff Uysal
Brian Blaubeux	Adam Gartner	Kathy & Mel Kalichman	Bob Mermelstein	Nathan Salant	Marlene & Barry Vegter
Samantha Blendis	Michele & Kenneth Gartner	Eric Kamisher	Paul Mermelstein	Alan Saltz	Sanford Victor
Isidore Bookbinder	Mark Gilbert	Donald Kanuk	Ruth Messinger	Bryan Salz	Sandi & Les Waldman
Michael Bookchin	Paola & Ronnie Gilbert	Heidi & Bruce Katz	Emilie & Andy Meyer	Michael (Satch) Saunders	Celia & Arnold Wasserman
Renee Borchardt	Sylvia Gilbert	Whammy Kaufman	Jerry Meyer	Sharon Schanzer	Charles Wasserman
Moe Bordwin	Danielle Gilde	Wayne Kellner	Marta & Lee Meyer	Robert Schecter	Malcolm Wattman
Jocelyn Borgner	Scott Gilden	Space & Gene Kelly	Erica Meyers-Rivera	Arnold Schiff	Wendy & Stuart Waxman
Adam Boris	Emily & Howard Gill	Blair Klaff	Kimberly Michaels	Henry Schlanger	Samuel & Alice Weinbaum
Larysa & Nelson Botwinick	Esther & Bert Glassberg	Barbra Klein	Keith Miller	Marni Schlectman	Darrell (Rubin) Weinberg
Larry Boxer	Joe Goldberg	Eleazer Klein	Mitchell Miller	Nancy & Scott Schnee	Diane & Allen Weiner
Elyse Braun	Melvin Goldberg	Avri Klemer	Tracie & Craig Miller	Jean & Phil Schneider	David Weintraub
Danielle Braunstein	Rosalie & Sol Goldberg	Marilyn & Philip Koenig	Jill & John Miskanic	Oren Schneider	Jennifer Weitz
William Briggs	Tobi Goldberg	Nathan Kolodney	Shaun Montague	Meri & Paul Schoenblum	Michele Wendel
Andy Brooke	Steven Goldenberg	Andrew Kominik	Shane Morrison	Zelig Schragar	Heather Wexler
Philip Caban	Butch Goldsmith	Phyllis & Warren Kossin	Steven Moses	Karen & Ken Schwartzberg	Melanie Wilchinsky
Matthew Caesar	Jennifer Goldstein	Elihu Kover	Joyce & Joel Moss	Barbara Scoll	Aaron Winarz
Steven Camhi	Michelle Goldstein	Marc Krigsman	Hillary Murdock	Ben Segan	Martin Winkler
Florence Chernak	Joshua Goodman	Tatyana Kristalova	Lawrence Nadel	Carol & Larry Seigel	Abbe Wittenberg
Lori Chozick	Randi Goodman	Robin & Gordon Krompior	Roni & Jason Nadell	Maria & Ken Seligson	Alan Wolf
Susan Clarke	Linda & Ben Gordon	Lisa Kurtzrock	Malcolm Newman	Richard Selinger	Bernard Wolf
Ira Cochlin	Karen Gorsky	Ellen & Jeff Lambert	Stephen Nitkin	Randi Seltzer	Lior Yahalomi
Andi & Marc Cohen	Howard Gotkin	Rory Langer	Marc Ochs	Dave Shay	Sean Zam
Sharon & Ron Cohen	Karen Raksis & Robert	Daniel Langer	Shelli & Larry Olinsky	Brandon Sherman	Anne & Joel Zbar
Sherman Cohen	Grader	Maureen & Howard Lantner	Kenny Orland	Sally & Roy Shirwindt	Mike & Barbara Zbar
Steve Cohen	Abe Greenberg	Minna & Melvin Lantner	Annette Osher	Julius Shmaruk	Elise & Corey Zbar
Donna Cohen Ross	Ronnie & Bob Greenblatt	Moran & Murray Lantner	Susan & Sheldon Osinoff	Florence Shtundel	Jordana Zbar
Meridee Cole	Shira & Evan Greenblatt	Karen & Stewart Lantner	Allison & Steven Packer	Nancy & Lee Sidor	Steven Zbar
Nancy Collins	Lloyd Greene	Betsy Lantner & Barry	Stacey & Rob Panepinto	Zachary Siegel	Marc Zeilander
Steven Condiotti	Tyler Greene	Mitchel	Ruth Paskoff	Roni Silberman McGuire	Arthur Zilz
Fred Cooper	Amy Gross	Sy Lasher	Bernard Patrusky	Alisa Singer	
Irene & Larry Cooperstein	Adam Grosshandler	Marty Laster	Artie Pazan	Nathan Sloan	

# Year Round Jewish Program To Expand

Surprise Lake Camp is proud to provide a spiritual home for Jews who find that our brand of Judaism speaks to them. Our Rosh Hashanah program, which now draws over 300 guests, is understandable, meaningful, comfortable, and inspiring. Our vision is to continue to expand camp as a year round spiritual community, and to have members of our camp family connect throughout the year to develop their spirituality in a way that is grounded in our traditions, but which speaks to them as modern American Jews. With a grant from UJA-Federation, we have hired a year round spiritual coordinator to help us achieve this vision!



**We hope you will join us on Saturday, May 19 for our 2nd annual Shabbat at Camp.** This program includes a service at the theater followed by lunch.



Additionally, we hope that you will be able to join us for Rosh Hashanah on Monday, September 17, and for our **two NEW programs**: Sukkot on Sunday, September 30, and our 2nd night Passover Seder on Tuesday, March 26, 2013.



## Did You Know???

The proceeds of Pete Seeger's newest version of Quite Early Morning benefits Surprise Lake Camp!

Quite Early Morning is an original Pete Seeger song. It was written in 1969, and a new version was recently recorded by Pete and Paul Suchow. It includes a new ending written by Paul at Surprise Lake Camp on a rainy day in the summer of 2010. The new, final verse says "When every nations' kids start singing, we'll make those freedom bells go ringing."

Paul Suchow, camp's Neil Diamond Music Specialist, arranged, produced, played guitar, and sang with Pete and his banjo. Joe D. Izaguirre played drums and engineered the session on July 13th, 2010.



The song features the timeless message that no matter what is going on in this crazy world, we can always find joy through music and singing. This is a message that is dear to both Pete and Surprise Lake Camp.

Thanks to Pete's exceptional kindness and Paul's outstanding efforts, all proceeds from the sale of this song will benefit the children of SLC!

Quite Early Morning is available on many different popular downloading sites such as Amazon, I-tunes, Rhapsody, Napster, Thumbplay, Nokia, Amazon On Demand, ShockHound, Zune, and Emusic. We hope you will take a moment to purchase the song, and not only enjoy the music, but gain tremendous satisfaction knowing that your purchase will help to support camp scholarships!





# Sheryl Speak

A few words from our Camp Director, Sheryl Kirschenbaum

The 110<sup>th</sup> Anniversary Gala has come and gone and I have to admit, it was an incredible feeling to be a part of something so "big." When I started at Surprise Lake Camp, I was aware of the rich history, but I never truly understood the magnitude.

Camp for me has always been my salvation. I grew up at the Samuel Field Y—my summers were spent in teen travel and my winters were spent on Teen Council. Teen Council was an elite group which planned activities for the teen program. Back in those days I was "too cool" to go to any of the events unless I had to, but I loved the meetings and making sure those with fewer options than me had something to do. When I was old enough, I worked day care or whatever else they would allow me to do. Those days at camp made me who I am today (for better or worse). I went on to become a CIT, a counselor, and then a Division Head. I never realized the impact that all those activities had on me. They probably saved my life!

Apparently camp was in my blood . . . or I was born to be in camping. I never left, except for a short stint at Covenant House as an Intake Coordinator. I was there for 4 months, moving up in the ranks, when I got a call that a JCC needed a teen director. And so the story of my career as a camp staff member begins!

When I moved from Director of the Mid-Island Y Day Camp to Surprise Lake Camp, I never in my wildest dreams realized the enormity of camp's impact. Perhaps it is simply because day camp is a different animal. At SLC you live, play, and breathe with your friends 24/7. In day camp, you only spend 8 hours a day with camp friends, and then go back to normal home life. When I became Camp Director two summers ago, it hit me . . . the responsibility for the future that came with the position. I realized that I was following a line of incredible people—Max Oppenheimer, Asher Melzer, Jerry Mark, and Jordan Dale. How in the world could I possibly fill those shoes? I soon discovered that I would not fill the shoes. Rather, I had to walk in my own. I decided that what I needed to do is what others had done before me. . . I needed to be me. Remember the history and build on the future.

Surprise Lake Camp has an amazing past, and I learn new things about camp every day. We are blessed with a wonderful group of alumni who are caring and supportive, both emotionally and financially. Surprise Lake Camp is truly a place that changes lives. I say it all the time. For 110 years we have been making a difference. I hope that I will be able to continue that tradition.



## Does Your Business Purchase Advertising?

As a result of a generous offer from a business that is a friend of Surprise Lake Camp, an opportunity exists for certain alumni to be incredibly helpful to camp without it costing them anything. Might you be one of them?

The key to this opportunity is that an alumnus needs to have a connection to a business that purchases a significant amount of advertising. Our institutional friend is a company called Active International. Active is willing to thank any business that supports Surprise Lake Camp with a significant contribution by providing that business with a trade credit equal to the value of the contribution. The donor business would then be able to use that credit to purchase advertising. As it would replace funds that would have been spent for advertising, the net cost to the donor/advertiser would be zero. However, Surprise Lake Camp would receive a significant contribution and the donor/advertiser would receive the good will generated by such a public gift.

The use of trade credits in the high-end advertising market is common and Active International is willing to provide trade credits at its own expense to a Surprise Lake Camp donor for two reasons. First, Active is an extremely charitable company with a strong philanthropic program called Active Cares and has a desire to support the work of Surprise Lake Camp. Second, Active hopes that it can be introduced to new potential clients.



Any donor/advertiser who obtains trade credits from Active as a result of a contribution to Surprise Lake Camp will need to use these credits in combination with cash to purchase future advertising, but it is the same advertising at the same cost as it would have been if they had simply purchased it as they normally do.

If you are associated with a business that you think might be interested in making a contribution to Surprise Lake Camp using Active International's generous offer, please contact Jordan at 212-924-3131 or [Jordan@surpriselake.org](mailto:Jordan@surpriselake.org) at your earliest opportunity.

One of Surprise Lake Camp's assets continues to be the vast array of ways in which it is supported by its alumni. Thanks to everybody for all you do, and we look forward hopefully to hearing from an alum or two who can help us in this new way!

\*\*\*\*\*



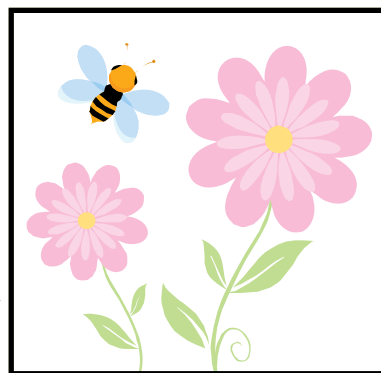
## What's the Buzz? SLC Is Getting Bees!

**Thanks to a grant from the Jewish Greening Fellowship, Surprise Lake Camp will be acquiring bees this summer!** Campers will observe the bees, see how they create and maintain their hives, learn how they use nectar to make honey, and eventually extract honey from the hives. What better way to teach the campers the significance of honey during Rosh Hashanah than with honey they get to harvest themselves? According to Wendy Dinn, Teva Supervisor, "if we can get the campers to see bees as beneficial and important members of our world, and challenge their preconceived notion of them as stinging pests that need to be killed, we will consider the program a success."

This is part of camp's ongoing commitment to nature education for our campers, or "Teva" in Hebrew, as it is now called. The campers will get to see a real hive with real bees in action; ones who head out every sunlit morning to forage for pollen and nectar, which then gets converted to honey for their sustenance. The hives will enable staff to remove sections to show campers. Since safety comes first, it means everyone involved will be dressed in beekeeping gear, veil, and gloves!

Interested campers will get the chance to learn more about what it takes to raise bees, maintain the hive, keep them healthy, and harvest the honey. They can also learn about the importance of bees to agriculture, since they are pollinators of 40% of our food crops. Our bees have been specially bred right in Putnam county to survive northern winters, and for good health without the use of chemicals.

There are also a few interesting Jewish connections! We all know about the tradition of using honey on Rosh Hashanah, but the Bible also talks about the seven forms of produce in Israel, including honey, and describes the country as a "land of milk and honey." In fact, some of the earliest archeological evidence of beekeeping comes from Israel, and the Talmud even records all the issues of ownership connected with bees and beehives.



**"My son, eat honey, because it is good; and the honeycomb,  
which is sweet to your taste."**

**Proverbs 24:13**

Give Surprise Lake Camp the best birthday present ever . . .



Be a part of the



**\$110,000 Birthday Challenge!**

To help honor camp during the 110<sup>th</sup> Anniversary celebration year, we are asking all campers and staff members to help us raise money from friends and family as a huge birthday present for camp!!

We have set up an on-line fundraising campaign that allows YOU—campers, staff, and anyone who loves SLC—to reach out to your contacts through **your own personal fundraising pages!!!** This gives each and every SLC fan the chance to share their feelings, stories, and pictures about what camp means to them and why it is important to help keep it going for another 110 years!

Prizes will be awarded to our top on-line fundraisers!

We challenge our entire camp community to be part of the \$110,000 Birthday Team in honor of our 110th Anniversary. Let's give camp the best birthday gift ever!

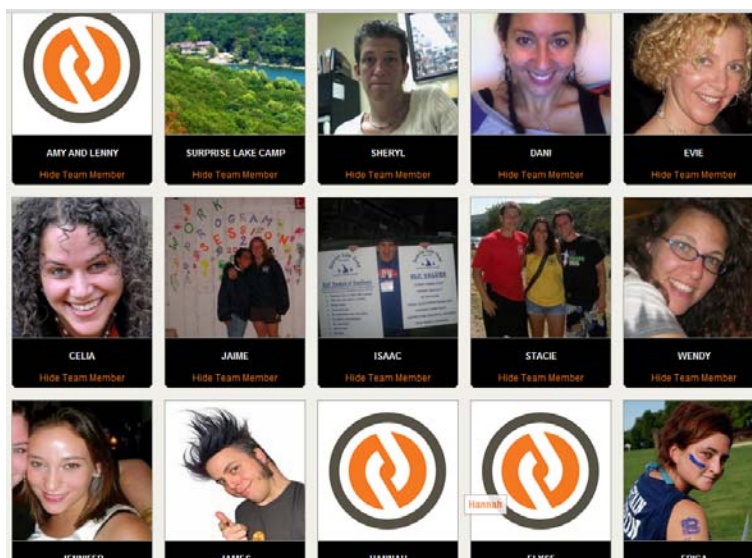
**Visit [www.crowdrise.com/slc110/fundraiser/surpriselake](http://www.crowdrise.com/slc110/fundraiser/surpriselake)**  
**today to join the 110th Birthday Team!**

### **Team Members As Of 4/15/12**

Celia Baczkowski  
Evie Berger  
Jake Biederman  
Elyse Braun  
Andi & MarcCohen  
James Dinn  
Wendy Dinn  
Amy Bechar &  
Lenny "LG" Grinberg  
Dani Johnson  
Erica Karron  
Sheryl Kirschenbaum  
Stacie Lilien  
Dan Schulman

Isaac Shapiro  
Jenni Sussel  
Hannah Wolland  
Jamie Zuckerberg  
Hannah\*  
KA\*  
Dena\*  
Diane\*  
Dima & Shanna\*

\*No last name  
provided







# 110th Anniversary Alumni Day!

## July 22, 2012 \* 10am-4pm

Friends, Swimming, Boating, Round-Up, Alumni Gear for Sale, BBQ, Photos, the Camp Museum and so much more. . . Don't Miss Out!

\*\*\*\*\*

### ***Alumni Day Eve . . . Members Only Event!***

**Who: Current, Paid Alumni Members & Their Families**

This includes Lifetime Members, and anyone whose membership is current. All current members will receive a separate, personal invitation in the mail. If you do not receive an invitation by June 30 and believe you are a member of the Alumni Association, please call Celia at 845-265-3616.

You may also join the Alumni Association at the door.

**When: Saturday, July 21, 2012 7pm-9pm**

**Where: The SLC Canteen**

**What: A fun pre-Alumni Day event! (Details to be announced soon)**

**Why? Membership Has Its Privileges!**



***LOOKING TO STAY IN THE NEIGHBORHOOD ON SATURDAY NIGHT?  
WE'VE RESERVED BLOCKS OF ROOMS AT THESE HOTELS!***

**Ramada Fishkill**

542 Route 9  
Fishkill, NY 12524  
Phone: (845) 896-6281  
Group Room Rate: \$103  
plus 12.25%  
Group Code: CGSLCA  
Must be booked by June 21

**Residence Inn**

14 Schuyler Boulevard  
Fishkill, NY 12524  
Marriot Reservations Phone #:  
800-331-3131  
\$139 plus tax for a Studio Queen  
\$149 plus tax for a Studio King  
Mention "Surprise Lake Camp  
Alumni" to receive special rate.

**Holiday Inn Express**

21 Schuyler Boulevard  
Fishkill, NY 12524  
Phone: (845) 896-4001  
Group Room Rate: \$131.99 plus tax  
Name of Block: Surprise Lake Camp Alumni  
Must be booked by June 20



***Still getting  
Reechoes  
only once  
a year?***

Now is the time to pay your SLC Alumni Association membership dues! Only paid members of the SLCAA receive Re-Echoes four times a year. Unpaid members only receive our Spring edition. So why continue to miss out on Camp and Alumni news? Become a member today! You can join on our website or by filling out the form on page 14. If you are not sure about the status of your membership, please call the camp office at 212-924-3131 or e-mail [alumni@surpriselake.org](mailto:alumni@surpriselake.org).

(212) 399-8888  
Dentist@DrLantner.com  
www.DrLantner.com

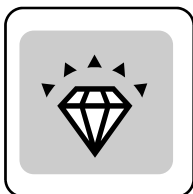
**Stewart Lantner, D.D.S.**  
**Joseph S. Goldberg, D.D.S.**

General, Cosmetic & Laser Dentistry  
Dental Sleep Medicine

Office Hours  
Monday thru Saturday & Evenings

Suite 800  
200 West 57th Street  
New York, NY 10019

## MATCO JEWELRY CO



*Manufacturers of Fine  
Jewelry*

Howie Berk 917.207.4257  
MATCOJRLRY@AOL.COM



The Family Board Game,  
Designed by Avri Klemer

penguinsoccerboardgame@gmail.com

Available only from  
www.nestorgames.com

Find Penguin Soccer merchandise at  
www.cafepress.com/penguinsoccer



MICHAEL ZBAR, CPA

MICHAEL ZBAR AND PETER M. LEUNG, LLP  
CERTIFIED PUBLIC ACCOUNTANTS

120 NORTH MAIN STREET, NEW CITY, NEW YORK 10956  
TELEPHONE: (845) 639-3100 • (212) 398-9111  
FAX: (845) 639-3180  
E-MAIL: mzbar@zbarleungcpa.com  
www.zbarleungcpa.com

LAW FIRM OF SETH STEIN, PC

**SETH STEIN**

120 Broadway, 28th Floor  
New York, New York 10271

(212) 532-5503 \* FAX (917) 591-8292

EMAIL: sstein@ssteinlawfirm.com

### SLC's Community Corner:

Submit your business card or advertisement to [alumni@surpriselake.org](mailto:alumni@surpriselake.org).

The rates for advertising in each issue are as follows:

1/8: \$25    1/4 Page: \$50    1/2: \$80    Full Page: \$120



**JEWELRY JUDGE**

The Nation's Jewelry Appraisers

We Do Not Sell Jewelry . . . We Appraise It!  
While You Watch

Jewelry Judge Ben Gordon, MGG/A  
Independent Appraisal Consultant  
59 Years of Professional Service

www.JewelryJudgeBenGordon.com • 713-961-1432  
5433 Westheimer Rd. #606 • Houston, TX 77056

## College Coaching Services

College Counseling  
Applications  
Financial Aid  
Scholarships



Larry Olinsky  
845-641-9898

20% discount for SLC alumni



*Jersey Lynne  
Farms, Inc.*

Tel. (718) 649-6730  
Fax. (718) 649-1256  
8801 Foster Avenue  
Brooklyn, NY 11236

Email: [kseeligson@jerseyllynnefarms.com](mailto:kseeligson@jerseyllynnefarms.com)

### Wholesale Distributor

Quality A Eggs  
Dairy Products  
Deli Provisions  
Meat  
Frozen Food  
Candy  
Beverages  
Paper, Plastic, Restaurant Products

**Kenneth Seligson**  
Ext. 149



## Jonathan M. Tarrash, M.D.

Board Certified in Pain Medicine  
Physical Medicine and Rehabilitation

4800 Linton Blvd  
Building A Suite 201  
Delray Beach, Florida 33445  
www.southpalmorthopedics.com

By Appointment Only  
(561) 496-6622  
Fax: (561) 496-6577



Kathy Sussell, NYU PCC  
ADHD Life Coaching  
for Adolescents,  
Young Adults and Adults

917.749.9517  
kathy@bravolifecoaching.com  
www.bravolifecoaching.com

# A Fun, Financial Website For Kids!



[www.minyanland.com](http://www.minyanland.com)

MinyanLand is a virtual community designed to engage kids and families in games and interaction that are entertaining and educational.

MinyanLand was created as a platform to entertain and educate a young generation so they understand the concept of a market and the basics of economics and finance on a real world level.

The economic system of MinyanLand mimics the real-life pricing of general goods and services. As players participate in the system, their actions will affect the overall MinyanLand economy. This is how they will learn.

To keep the economy stabilized, for instance, players must stay healthy by eating on a regular basis. MinyanLand will also offer incentives to encourage such behavior as charitable giving.

The website's mission is to help address the gap between classes created in part by the financial illiteracy of many in our country, if not the world. The site is sponsor-supported to keep it free and open to as many children as possible. By not charging for subscriptions or imposing monthly usage fees, they are able to reach children and families at all economic levels. In addition, they are teaching children about how our economic system works, and advertising is a part of it.

**GemsAround**<sup>TM</sup>  
JEWELRY THE WAY YOU WANT IT

In honor of  
Surprise Lake Camp's  
110<sup>th</sup> anniversary summer,  
**www.GemsAround.com**  
is offering  
**20% off**  
your entire purchase.

Enter the coupon code **GLICH**  
at checkout to receive your discount.

Coupon code is good for one use per customer email address up to any amount.  
Discount does not include sales tax. Shipping is always *fast* and **FREE**.

HEALING ENERGY BALANCING

MELISSA VOGEL  
INTEGRATED BODYWORK  
THERAPIST

130 RIDGE STREET  
PEARL RIVER, NY 10965  
845.735.9596 (TEL)  
845.735.1387 (FAX)





SURPRISE LAKE CAMP  
ALUMNI ASSOCIATION  
307 SEVENTH AVE, SUITE 900  
NEW YORK, NY 10001

Return Service Requested

Non-Profit Org.  
U.S. Postage  
PAID  
New York, NY  
Permit No.  
5851

*It takes money and resources for the Alumni Association to mail you this newsletter.  
Please let us know if you move, get multiple copies, or would like to be removed from our mailing list!*

You Are Invited To Our 2nd Off-Season

**SLC SHABBAT**

SHABBAT

SHALOM!



שבת  
שלום



Date: Saturday, May 19, 2012

Time: Service will begin at 10:00 am.

Refreshments will be served at 9:15 am.

Place: Surprise Lake Camp, Cold Spring, NY



PLEASE RSVP BY May 7th!

BY MAIL: c/o Surprise Lake Camp Shabbat, 307 7th Ave.—Suite 900, NY, NY 10001

BY PHONE: 212-924-3131 BY FAX: 212-924-5112 BY E-MAIL: [slcers@surpriselake.org](mailto:slcers@surpriselake.org)

*This Shabbat program is sponsored in part by the Suchow Family as a tribute to Surprise Lake Camp for all that it does to build self-esteem and character in children, in memory of Robert Garry Bieber.*